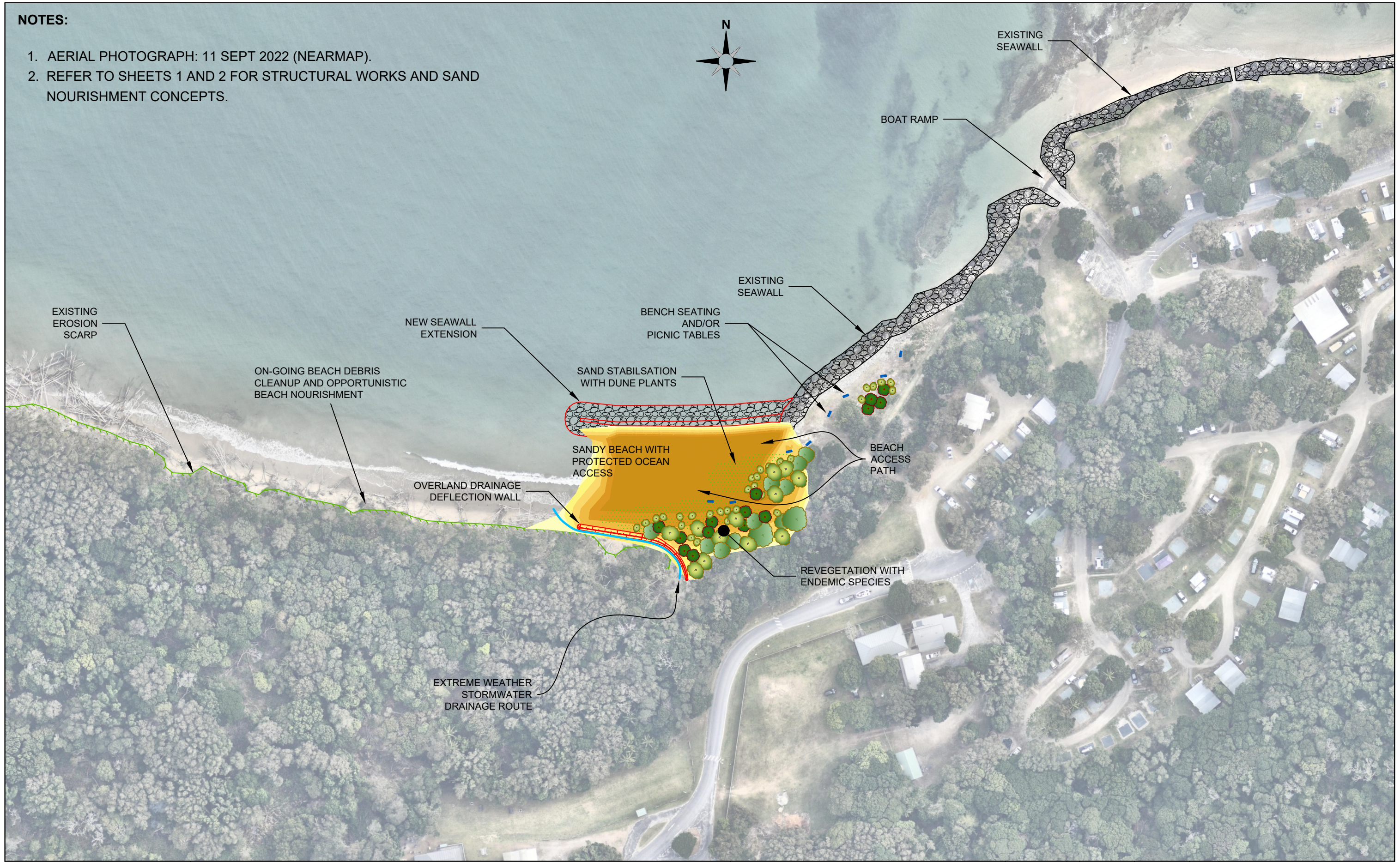
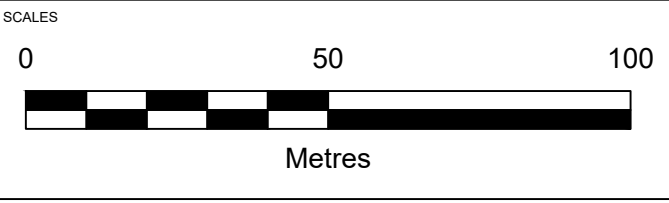


NOTES:

1. AERIAL PHOTOGRAPH: 11 SEPT 2022 (NEARMAP).
2. REFER TO SHEETS 1 AND 2 FOR STRUCTURAL WORKS AND SAND NOURISHMENT CONCEPTS.



DRAWING PRODUCED BY:
 HYDROSPHERE CONSULTING
 P.O. BOX 7059
 BALLINA NSW 2478
 WWW.HYDROSPHERE.COM.AU



CLIENT
 NATIONAL PARKS AND WILDLIFE SERVICE

WOODY HEAD EROSION RESPONSE
 LANDSCAPE CONCEPT

JOB NUMBER
 22-037

REVISION	DATE	DESCRIPTION	DRAWN
	2022-12-07	REV 0	MH

DRAWING NUMBER

SHEET 3

Y:\22-037 Woody Head and Sandon coastal erosion response plans\Drawings\Concept - extended seawall landscape.dwg