

Conservation Action Plan

Koala (*Phascolarctos cinereus*)

This plan has been prepared in accordance with the requirements of s.78C of the National Parks and Wildlife Regulation 2019 (Reg.) in relation to an Asset of Intergenerational Significance (AIS) as declared under s.153G of the *National Parks and Wildlife Act 1974*.

Site details

AIS site	AIS-E0-181, AIS-E0-183, AIS-E0-187, AIS-E0-190, AIS-E0-192
Site location	An area of 1184 hectares in Coornartha Nature Reserve An area of 1119 hectares in Dangelong Nature Reserve An area of 1448 hectares in Kybeyan Nature Reserve An area of 1390 hectares in Kybeyan State Conservation Area An area of 2286 hectares in Macanally State Conservation Area An area of 306 hectares in Mount Clifford Nature Reserve An area of 439 hectares in Numeralla Nature Reserve
NPWS contact	Area Manager, Snowy River Area, Southern Ranges Branch

Environmental values

This table sets out the environmental values for which the land was listed as an AIS (Reg. 78C(3)(a)).

Identified value(s)	Value description
Important habitat for the koala	The koala is an arboreal marsupial with a fragmented distribution throughout eastern NSW. This endangered species inhabits eucalypt woodlands and forests feeding on the foliage of more than 70 eucalypt species and 30 non-eucalypts species. Koalas are inactive during the day, feeding and moving mostly at night.

Key risks to environmental values

This table sets out the key risks to the environmental values of the land (Reg. 78C(3)(b)).

Key risk(s)	Description
Inappropriate fire regimes	Inappropriate fire frequency and intensity that alters vegetation composition and structure may lead to a reduction in suitable habitat or food availability and affect the persistence of koalas at the sites.
Feral predators	Predation of koalas by wild dogs.
Pathogens, diseases and microorganisms	Infection by <i>Chlamydia pecorum</i> , leading to chlamydial disease and koala retrovirus can result in mortality of individuals and reduce reproductive success leading to a decline in koala populations at the sites.
Anthropogenic climate change	A combination of increased maximum temperatures and decreased rainfall may result in heat stress to koalas. Changes to weather patterns and climatic conditions as a result of anthropogenic climate change that increases frequency and severity of drought conditions, extreme temperature days, and fire may adversely impact the health of koala habitat and reduce the nutritional value of preferred food resources, leading to a decline in koala populations at the sites.
Disturbance	Authorised infrastructure maintenance activities and visitor use that leads to damage to koala habitat through loss of habitat trees and fragmentation of habitat or disturbance to individuals from interference may affect the persistence of koalas at the sites.
Unintended harm	Impact to species from vehicle strike.

Conservation activities

This table sets out the conservation activities required to:

1. Control, abate or mitigate the key risks and
2. maintain, restore and remediate the environmental values of the land (Reg. 78C(3)(c)).

Key risk(s)	Impacted site(s)	Conservation activities
Inappropriate fire regimes	All sites	<ul style="list-style-type: none"> • Develop guidance on the appropriate fire management for the habitat of the koala within 12 months of adoption of this plan and update as required. This guidance must provide for: <ul style="list-style-type: none"> - maintenance of an appropriate fire regime by developing and implementing a site-specific burn plan for the declared areas - implementation of any required fire protection and response measures in the declared areas - Integration of site-specific requirements into NPWS and NSW Government bushfire planning, risk management and operational response arrangements. • Implement fire management consistent with the guidance. • If required, implement supplementary food and water to maintain individuals after fire events until habitat has sufficiently recovered.

Koala (*Phascolarctos cinereus*):
Conservation Action Plan

Key risk(s)	Impacted site(s)	Conservation activities
Feral predators	All sites	<ul style="list-style-type: none"> To the extent practicable, reduce the density of wild dogs to a level that is not having an ecologically significant impact on the koala, and maintain the density at or below that level by undertaking opportunistic wild dog control (e.g., shooting, trapping, baiting or other approved methods).
Pathogens, diseases and microorganisms	All sites	<ul style="list-style-type: none"> Define trigger points and associated interventions for koala decline resulting from disease outbreaks.
Anthropogenic climate change	All sites	<ul style="list-style-type: none"> If required, assess direct impact of anthropogenic climate change on koalas and the species habitat. If a decline in species trajectory is attributed to impacts of anthropogenic climate change, implement protocols to mitigate impacts of temperature extremes on the koala population at the sites.
Disturbance	All sites	<ul style="list-style-type: none"> Undertake periodic reviews to identify whether infrastructure maintenance or visitor use is having an adverse impact on koalas. If adverse impacts are observed implement actions to mitigate the impacts. This may include: <ul style="list-style-type: none"> upgrade or realignment of trails to avoid known habitat installation of signage or more discrete marking systems to delineate exclusion areas or habitat trees installation of barriers or other suitable structures to minimise impacts from infrastructure maintenance and visitor use. If required, develop and implement guidance for staff, utility managers, council and contractors about appropriate maintenance practices that minimise impacts to koala populations and habitat.
Unintended harm	All sites	<ul style="list-style-type: none"> Install signage to educate drivers and raise awareness of the risk to koalas from vehicle strikes.
All risks	All sites	<ul style="list-style-type: none"> If required, undertake conservation translocations to increase the size, health and/or genetic diversity of the populations at the site. If required, and subject to approvals, source animals from the site to re-establish populations in other NSW locations where they have become locally extinct (reintroduction), and/or to increase the size, health, and genetic diversity of existing populations (reinforcement) through conservation translocations. If required, undertake habitat restoration or improvement through supplemental planting and/or other practical methods to extend foraging habitat and improve the availability of palatable species and habitat tree diversity at the sites.

Other land management activities

Within the declared land there are existing assets and infrastructure of NPWS and other external service providers, including public utilities.

Maintenance operations (including inspection, emergency works and routine and standard maintenance) that are exempt development in accordance with the *Environmental Planning and Assessment Act 1979*, and which are performed on and around existing assets and infrastructure, are authorised under this conservation action plan (CAP) provided such operations are undertaken in a manner that aims to minimise the risk to the declared environmental values of the land and with any other required consents or approvals.

All maintenance operations on the declared land are to be undertaken in accordance with this CAP.

Measuring and reporting

This table sets out the requirements for measuring and reporting on health and condition (Reg. 78C(3)(d)).

Attribute	Metric	Method
Health and condition of the koala population	Population estimate, or if a population estimate is not feasible, area of occupancy	Design, and implement every 5 years, a survey to generate an estimate of the number of mature individuals at the sites. If this is not feasible, design and implement every 5 years a survey to estimate the area of occupancy of koalas at the sites.

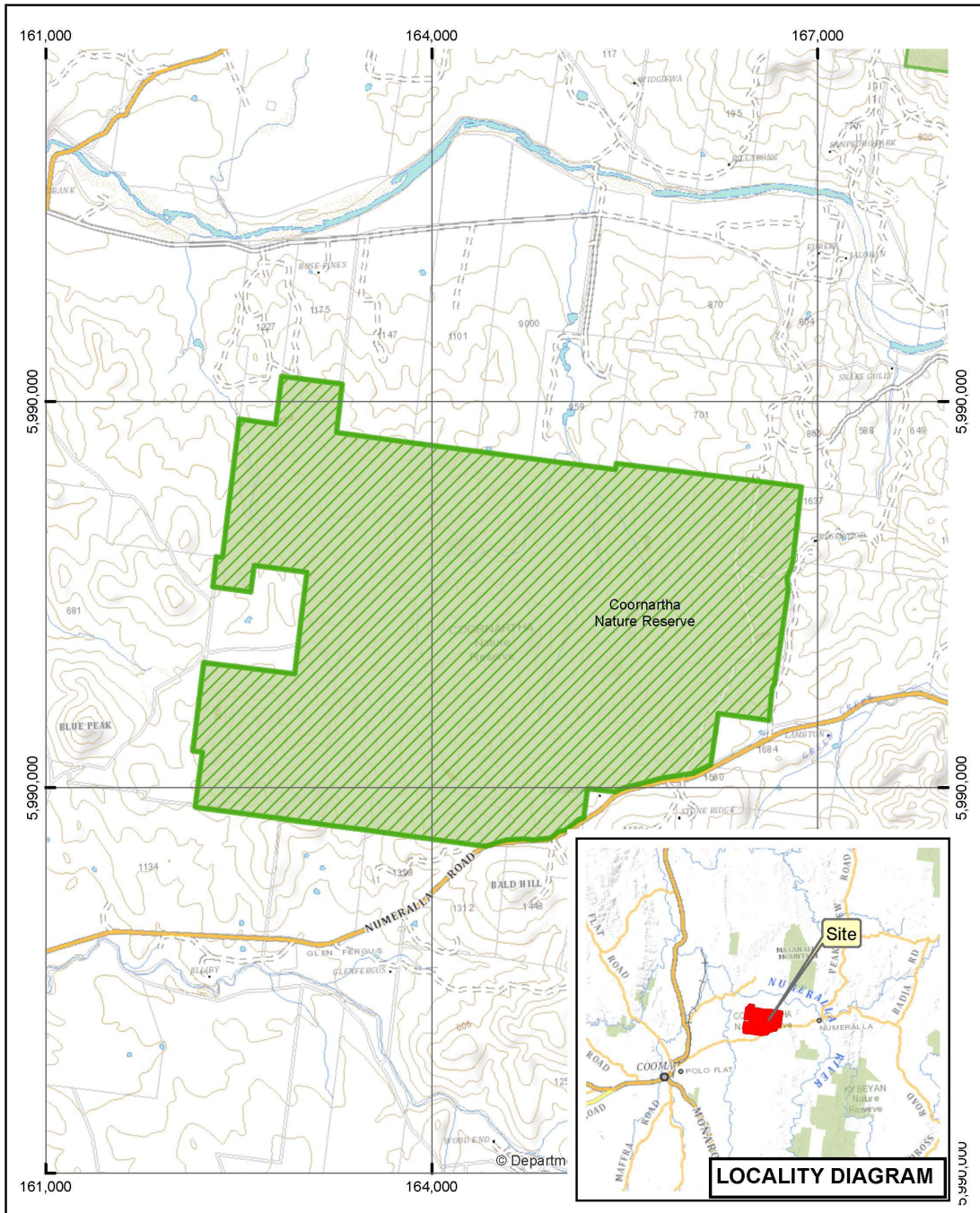
A report on the health and condition of the value for which this AIS was declared will be prepared and published on the Department of Planning and Environment website: www.environment.nsw.gov.au. The report will summarise the baseline and current health and condition of the values of the declared land and its overall trajectory.

Evaluation of conservation action plans



This CAP will be amended or replaced as new information becomes available that helps improve our management of the identified assets (Reg. 78H).

The Secretary must appoint a scientist, or a panel of scientists, to conduct a review, as soon as possible after the period of five years from the first approval of a CAP, to examine whether CAPs have been effectively implemented (Reg. 78J(1)).

Koala (*Phascolarctos cinereus*):
Conservation Action Plan




Legend



-  Declared Land
-  NPWS Estate

AIS-E0-181
Asset of
Intergenerational Significance
Koala
(*Phascolarctos cinereus*)
Coonartha Nature Reserve

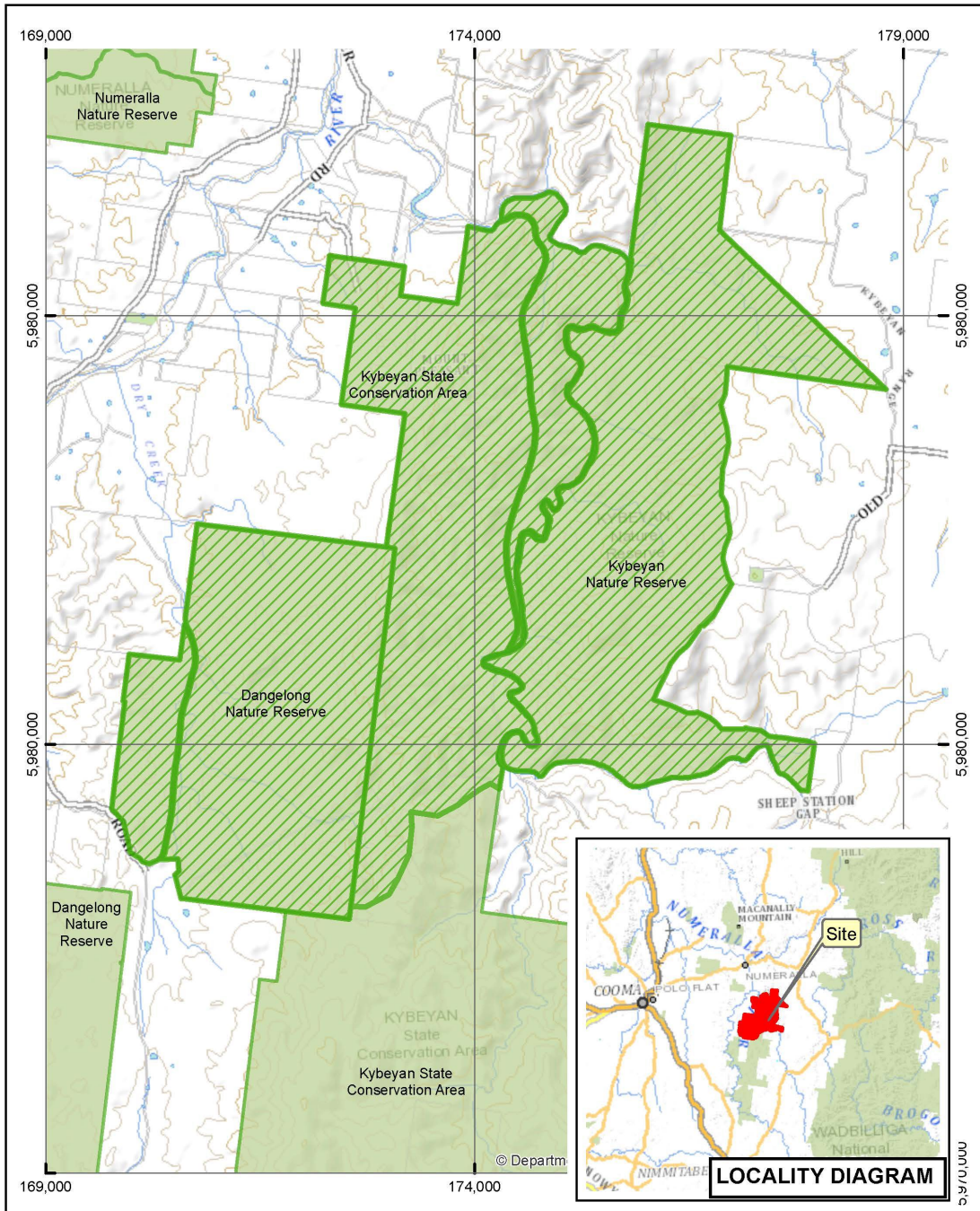
Copyright of Department of Planning Industry and Environment.
This map is not guaranteed to be free from error or omission. The Department and its employees disclaim liability for any act done on the information in the map and any consequences of such acts or omissions.

N 0 0.4 0.8 1.2 km





Koala (*Phascolarctos cinereus*):
Conservation Action Plan



Legend

-  Declared Land
-  NPWS Estate



AIS-E0-183
Asset of Intergenerational Significance
Koala (*Phascolarctos cinereus*)

**Dangelong Nature Reserve,
 Kybeyan Nature Reserve and
 Kybeyan State Conservation Area**

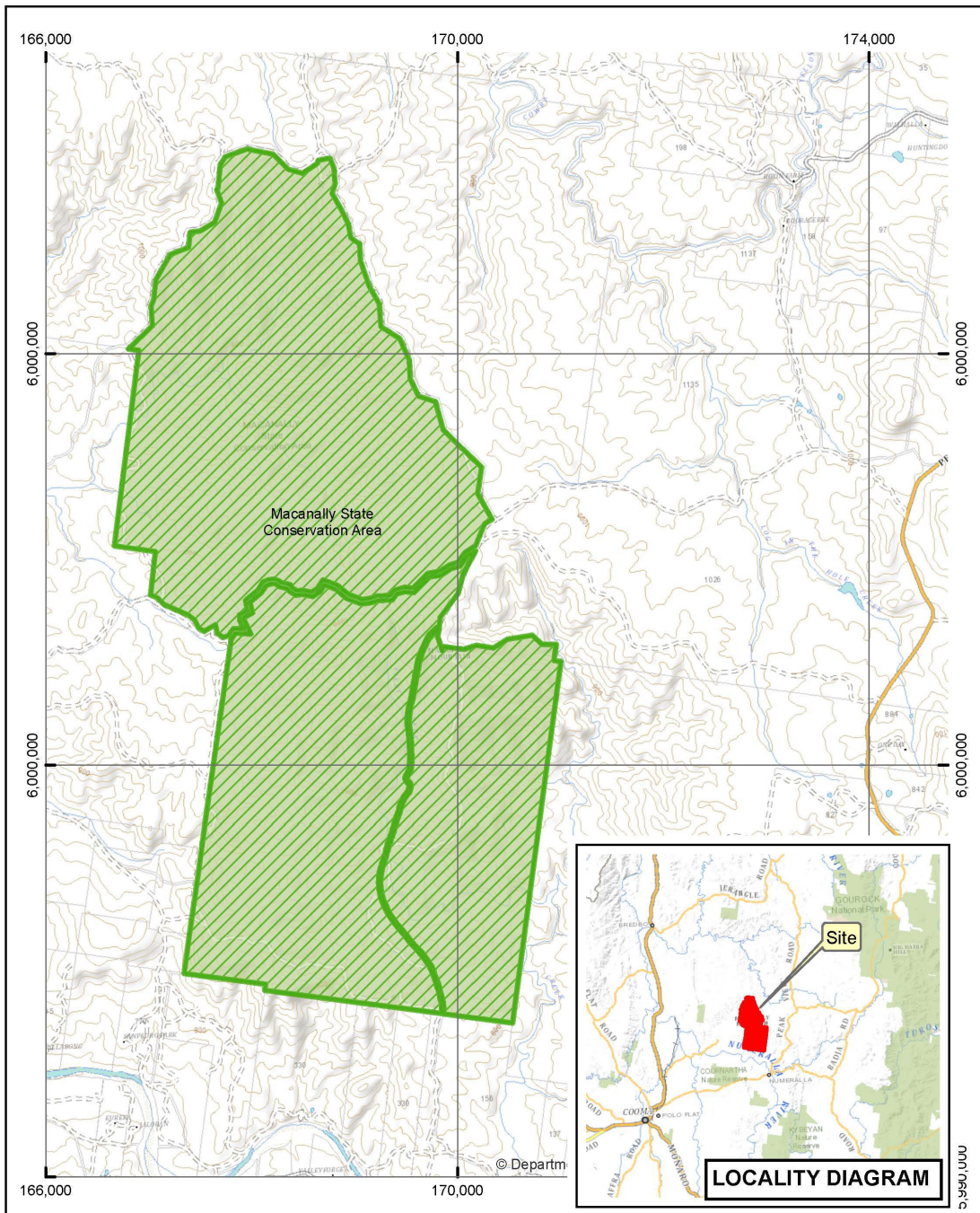
Copyright of Department of Planning Industry and Environment
 This map is not guaranteed to be free from error or omission. The Department and its employees disclaim liability for any act done on the information in the map and any consequences of such acts or omissions.

0 0.65 1.3 1.95 km



N

Koala (*Phascolarctos cinereus*):
Conservation Action Plan





Legend

-  Declared Land
-  NPWS Estate

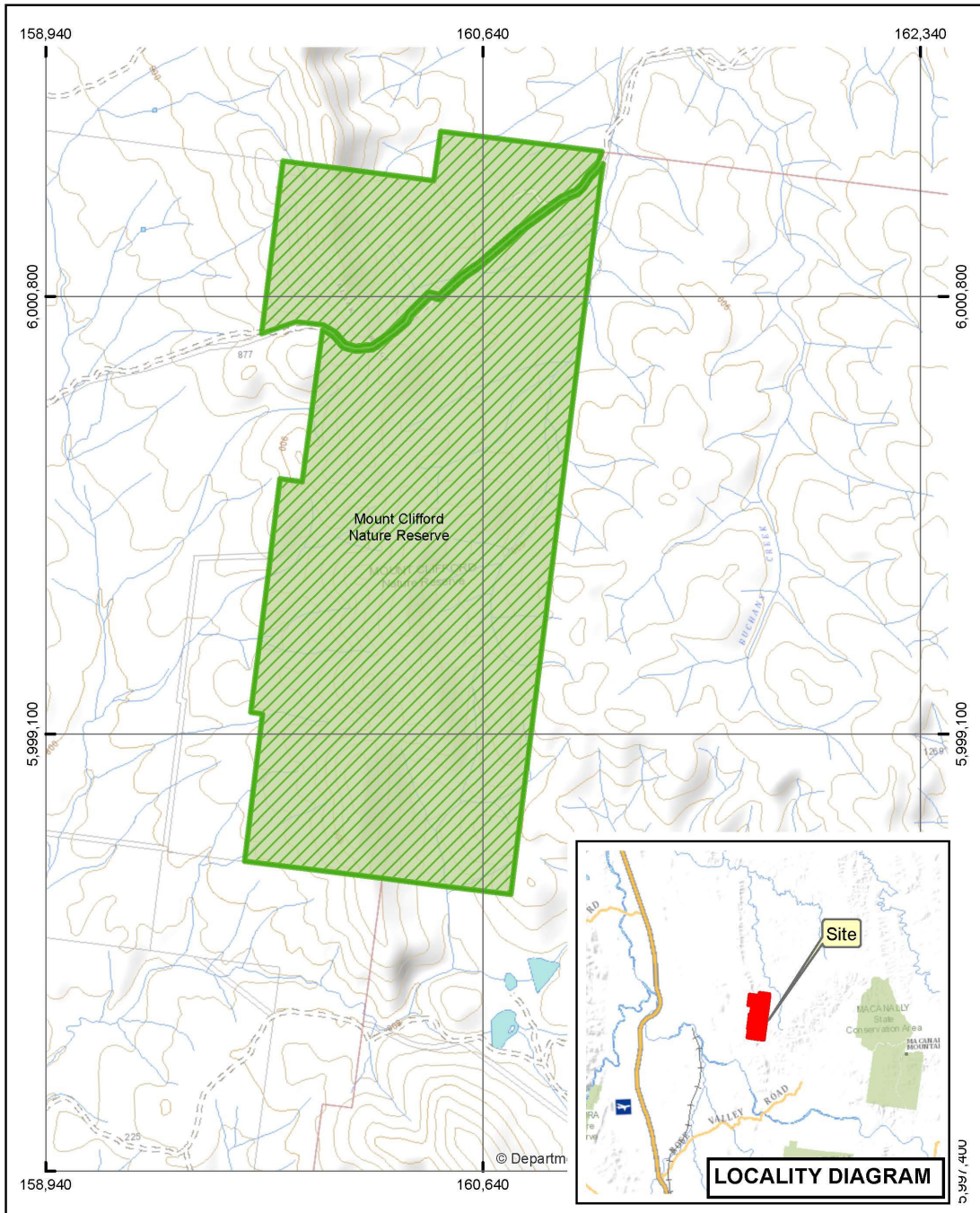
AIS-E0-187
Asset of
Intergenerational Significance
Koala
(*Phascolarctos cinereus*)
Macanally State Conservation Area

Copyright of Department of Planning Industry and Environment
This map is not guaranteed to be free from error or omission. The Department and its employees disclaim
liability for any act done on the information in the map, and any consequences of such acts or omissions.



N
0 0.5 1 1.5 km

Koala (*Phascolarctos cinereus*):
Conservation Action Plan





Legend

-  Declared Land
-  NPWS Estate

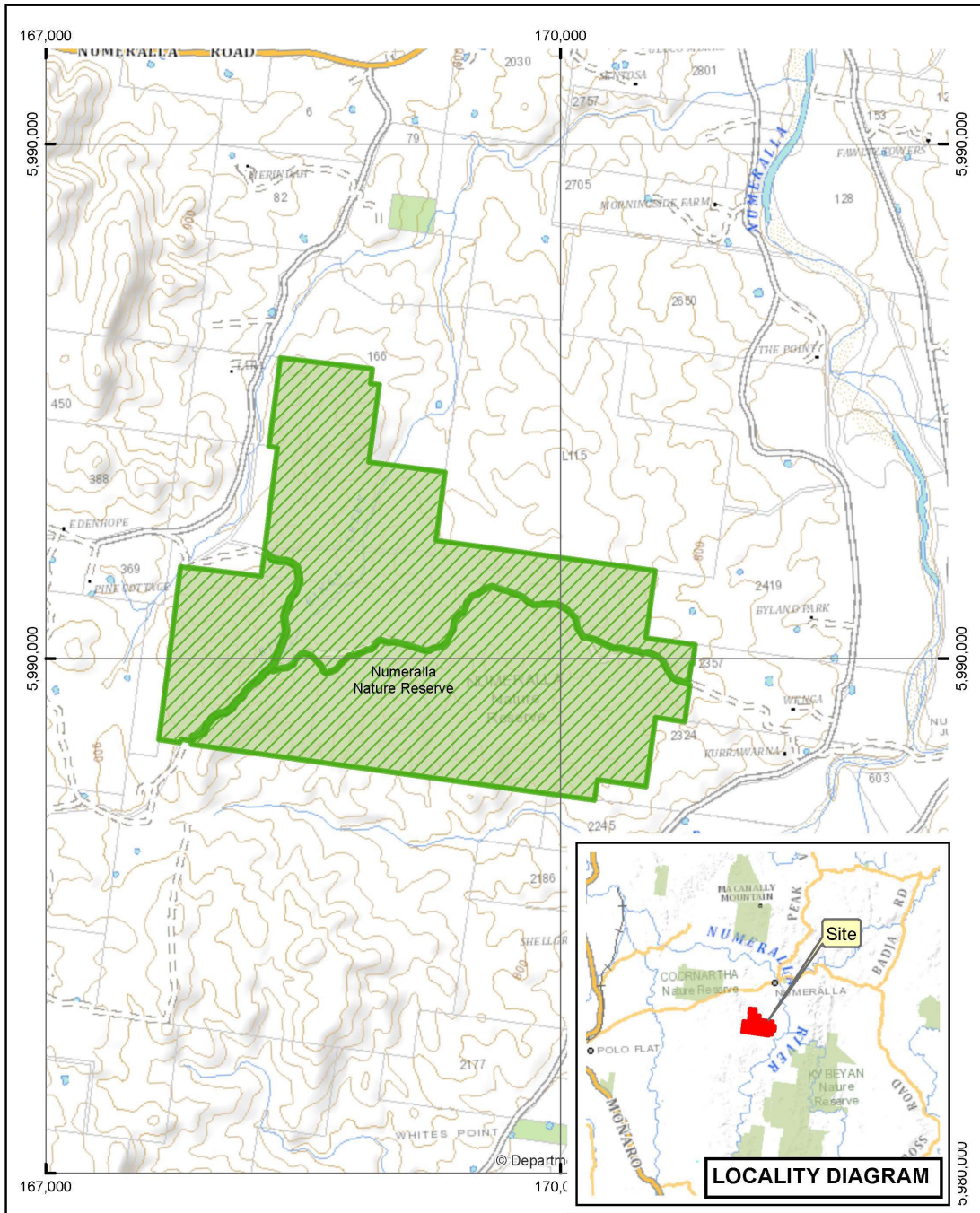
AIS-E0-190
Asset of
Intergenerational Significance
Koala
(*Phascolarctos cinereus*)
Mount Clifford Nature Reserve

Copyright of Department of Planning Industry and Environment
This map is not guaranteed to be free from error or omission. The Department and its employees disclaim liability for any act done on the information in the map and any consequences of such acts or omissions.



N 0 0.2 0.4 0.6 km

Koala (*Phascolarctos cinereus*):
Conservation Action Plan



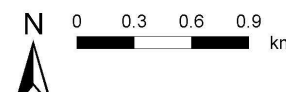


Legend

-  Declared Land
-  NPWS Estate

AIS-E0-192
Asset of
Intergenerational Significance
Koala
(Phascolarctos cinereus)
Numeralla Nature Reserve

Copyright of Department of Planning Industry and Environment.
 This map is not guaranteed to be free from error or omission. The Department and its employees disclaim liability for any act done on the information in the map and any consequences of such acts or omissions.

N 0 0.3 0.6 0.9 km

Koala (*Phascolarctos cinereus*):
Conservation Action Plan

Date prepared	March 2023
Date approved	June 2023
Approved by	Atticus Fleming, Acting Coordinator General, Environment and Heritage Group
Due for review	June 2028

Environment and Heritage, Department of Planning and Environment,
Locked Bag 5022, Parramatta NSW 2124
Phone: 1300 361 967; email: info@environment.nsw.gov.au; www.environment.nsw.gov.au
ISBN 978-1-923018-25-9; EHG2023/0137: July 2023.