

**CAPERTEE NATIONAL PARK  
MUGGI MURUM-BAM STATE  
CONSERVATION AREA  
Fire Management Strategy  
2013**

This strategy should be used in conjunction with aerial photography and field reconnaissance during incidents and the development of incident action plans.

This document is copyright. Apart from any fair dealing for the purpose of study, research, criticism or review, as permitted under the Copyright Act, no part may be reproduced by any process without written permission.

This strategy is a relevant Plan under Section 38 (4) and Section 44 (3) of Rural Fires Act 1997. The NSW National Parks and Wildlife Service is a part of the Office of Environment and Heritage. Published by the Office of Environment and Heritage (NSW), June, 2013. Contact: PO Box 552, Katoomba NSW 2780.

Date Approved: 16/06/2017

Datum: Geocentric Datum of Australia (GDA) 1994 Aerial Photography: Flown in 2005.  
Projection: Australian Map Grid (AMG) Zone 56



**Fire Season Information**

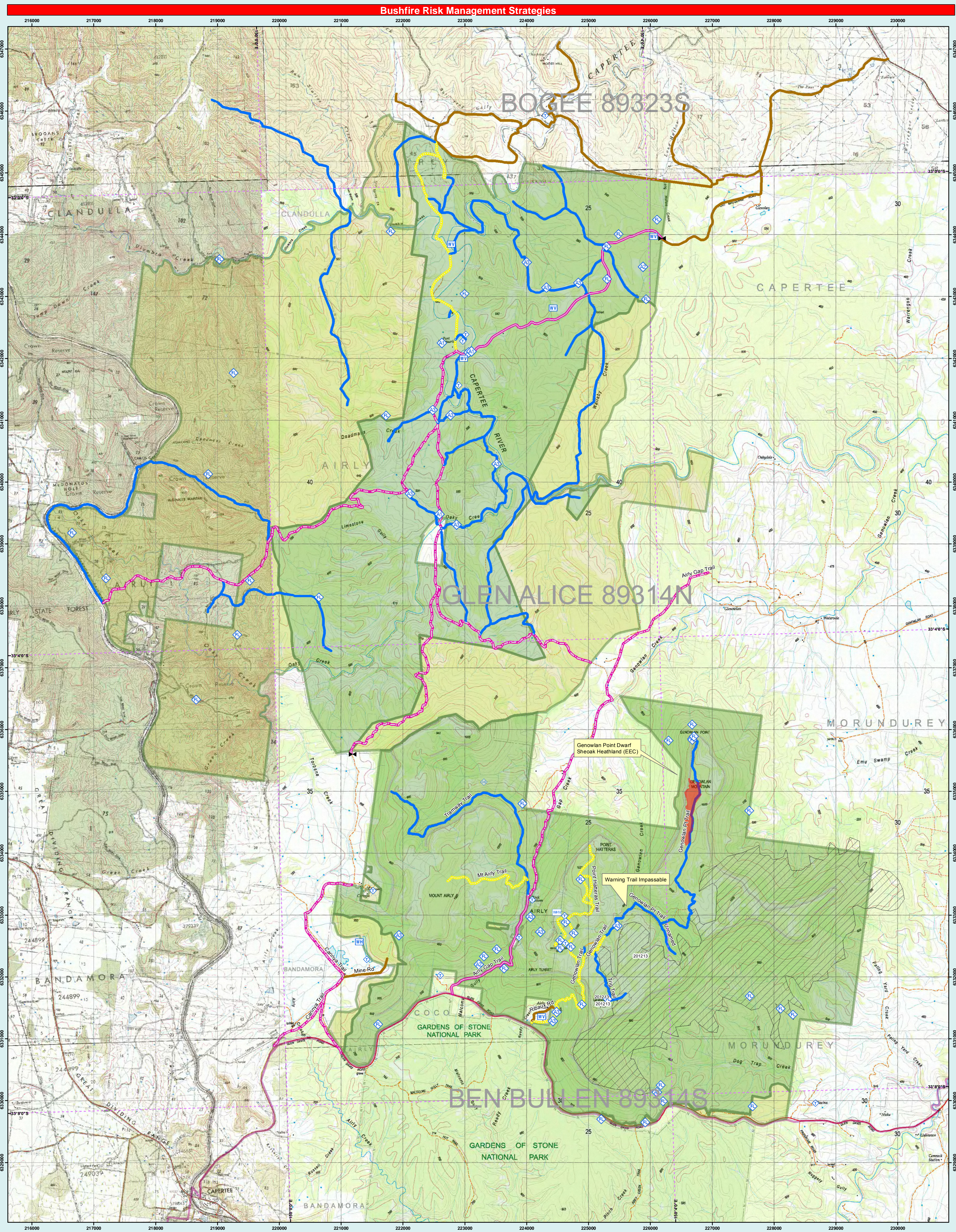
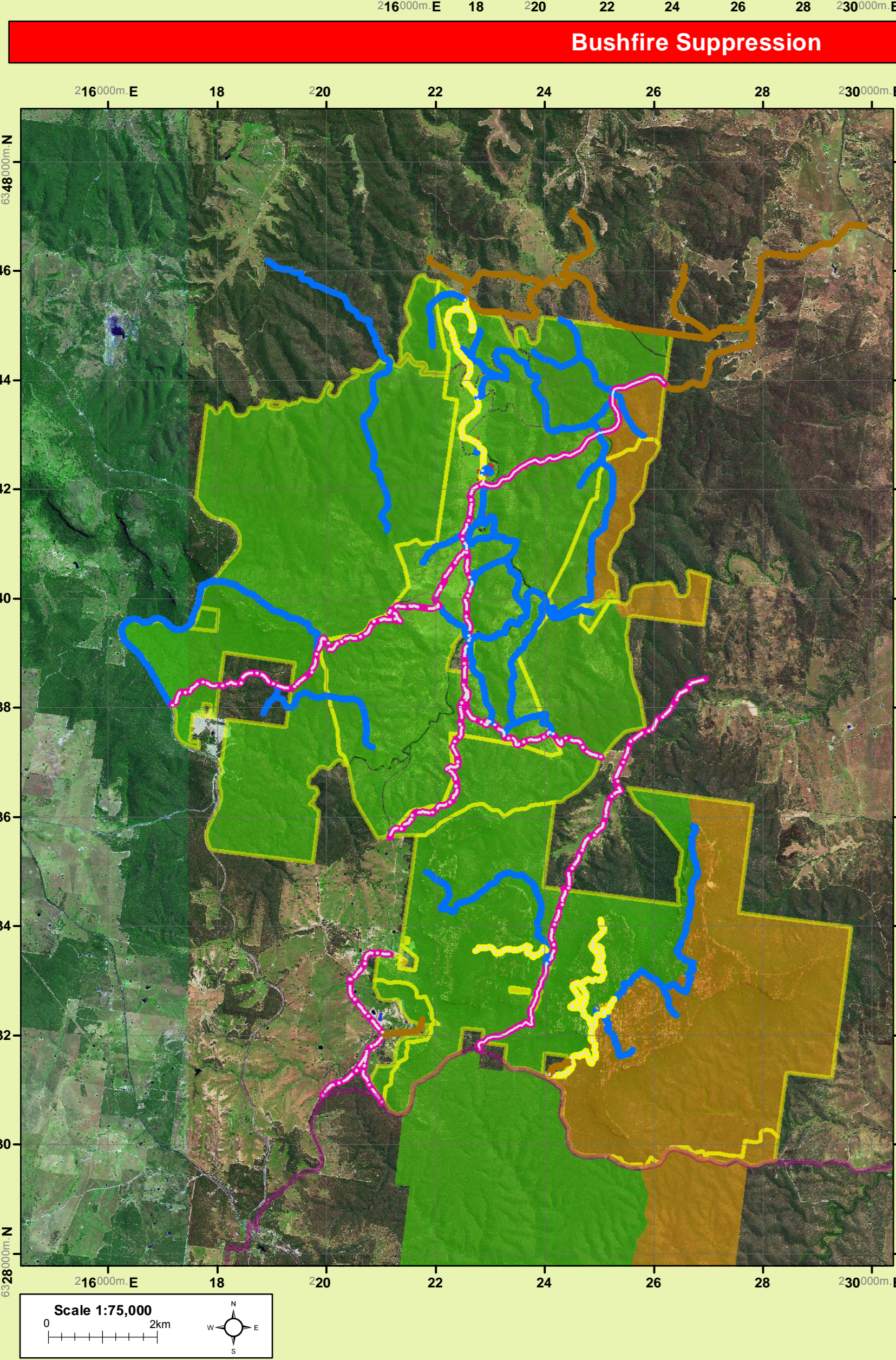
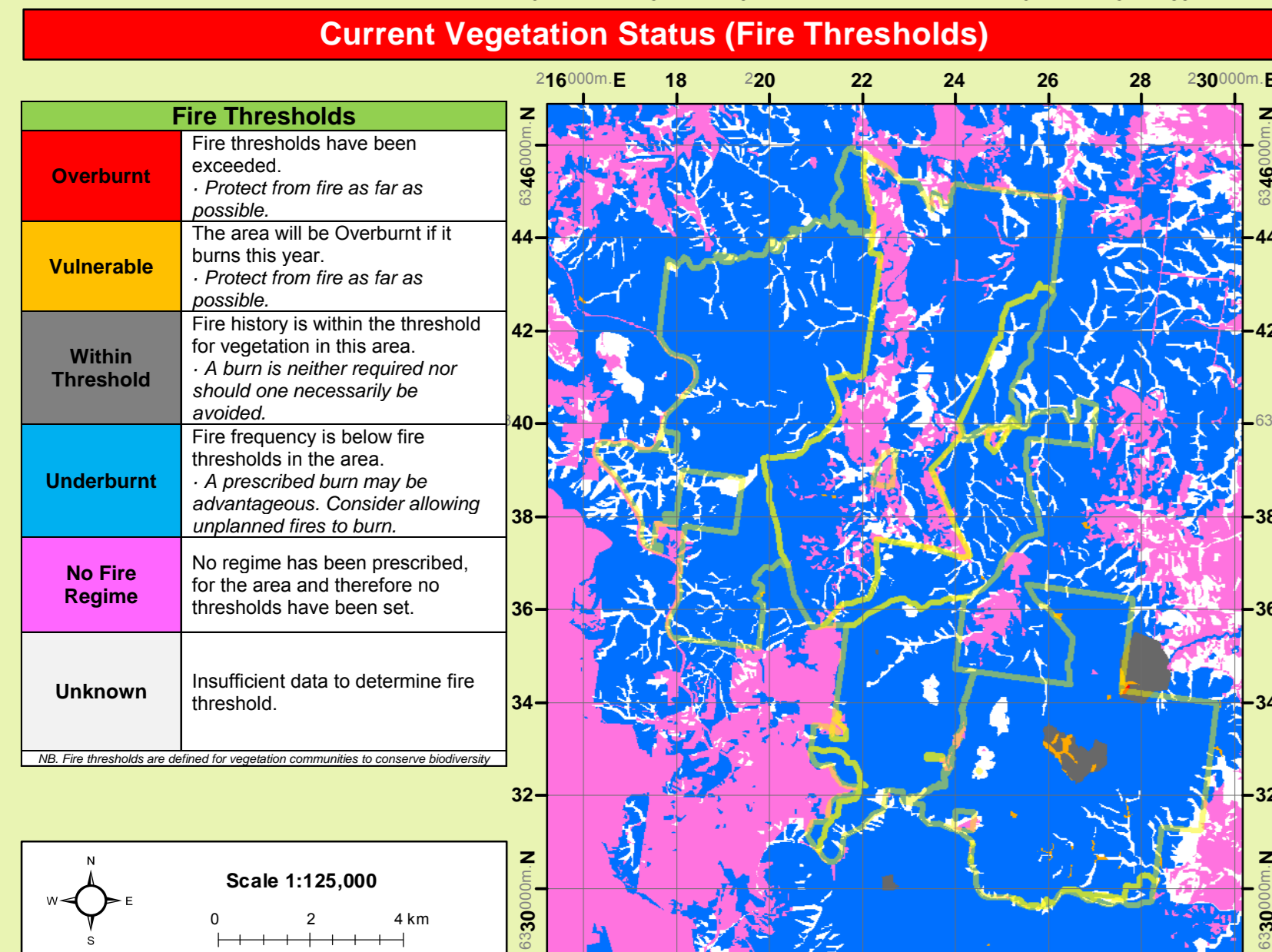
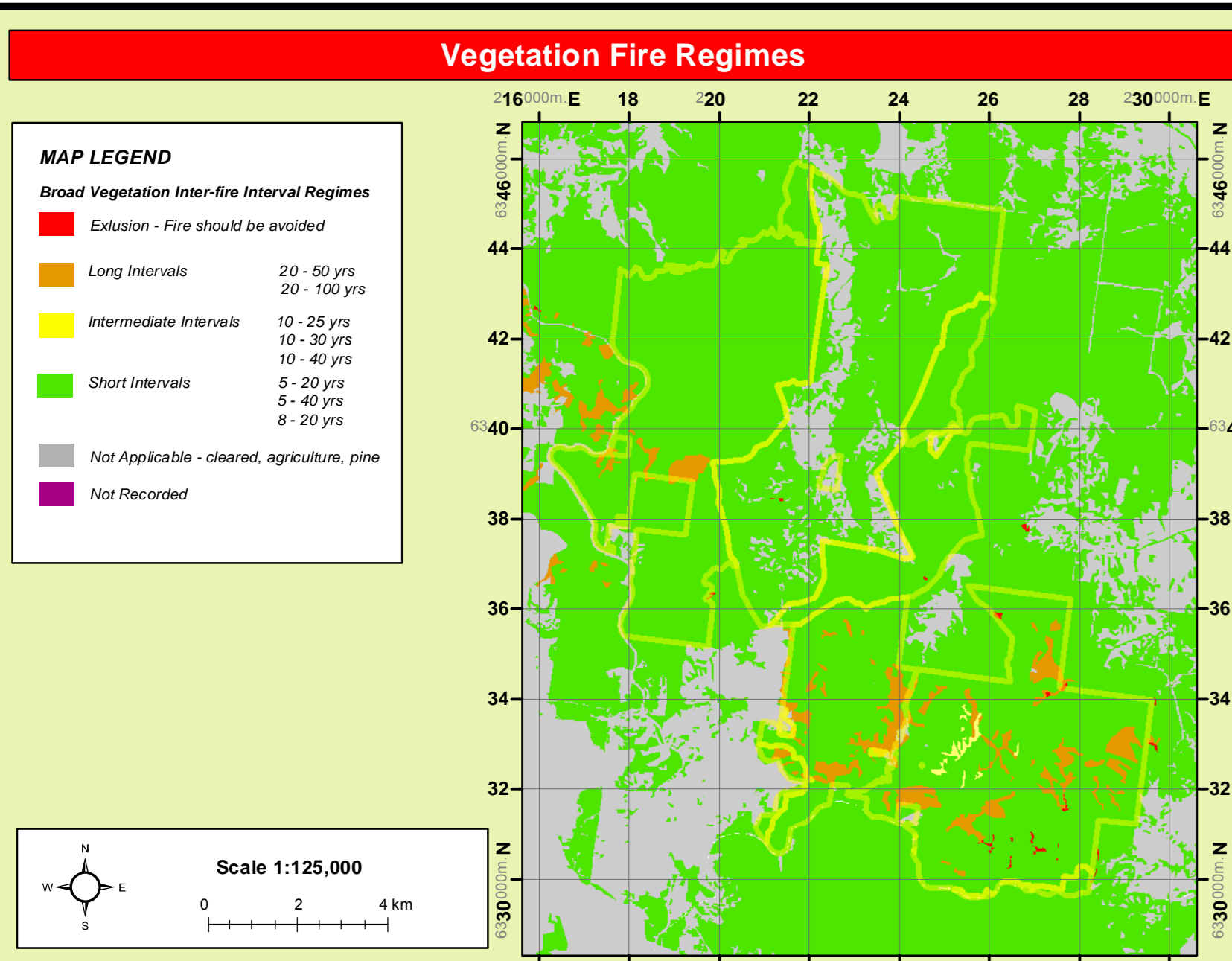
The statutory wildfire season in NSW is between 1<sup>st</sup> October and 31<sup>st</sup> March. This may be extended if lead to increased fire risk outside of this period.

**Wildfires**

Prescribed Burning (NSW RFS 4.7)

**Related Documents**

- National Parks and Wildlife Service Fire Management Manual 2012-13
- Capertee Muggi Murum-Bam Plan of Management
- Cudgong Bushfire Management Committee - Operations Plan
- Lithgow Bushfire Management Committee - Operations Plan



**Contact Information**

Agency	Position / Location	Phone	Mobile	Fax
National Parks	Regional Duty Officer (24 hour) - ask for Blue Mountains Region Duty Officer	47876094		
	Mudgee Area Manager	6370 9000	0428 218 019	
& Wildlife Service	NPWS Mudgee Area Office	63709000		6370 9010
	NPWS Rylstone Depot	6370 1368		6370 1341
	Blue Mountains Regional Office	4784 7300		4782 6100
RFS	FIMS	9895 6444		9895 6405
	Flight Operations Unit (Park Air)	87134900		87134999
SES	Lithgow Fire Control Centre	6353 1862		
	RFS Aviation	8741 5401		8741 5301
Emergency Services	Emergency	132 5000		
	Police Ambulance and Fire	000		
Forests NSW	Dubbo Office	6841 4288		6884 4771
Police	Mudgee	6372 8599		6372 8511
Ambulance	Bookings	131 233		
Hospital	Mudgee District Hospital	6378 6222		
Council	Mid Western Regional Council	6378 2850		
Centennial Coal	Airly Mine	6359 2112		6359 2121

**Communications Information**

Service	Channel	Location and Comments
NPWS - VHF (Repeater)	1, 3, 8	Bocoble repeater - covers Mudgee, Rylstone, Coolah Tops repeater - covers Merriwa, Coolah, Corinderry repeater - covers Rylstone, Wollemil NP, Capertee Valley
NPWS - VHF (Fireground Simplex)	33, 35, 40	Bocoble, Coolah Tops
NPWS Portable repeater	13	Based at Blackheath - available for helicopter insertion
UHF - CB	1-40	Choose channel on fireground. Not for strategic communication. Most RFS vehicles and helicopters have UHF.
RFS		Determined and advised by IMT
Mobile Phone 3G		Limited - good coverage from high peaks (Mudgee) 0147 153 582
Satellite Phone		

**Resource Guidelines**

Resource	Guidelines
Aboriginal Cultural Heritage Site Management (NPWS FMM 4.11)	<ul style="list-style-type: none"> <li>As far as possible protect site from fire.</li> <li>Do not cut down trees.</li> <li>Use of foams, wetting agents &amp; retardant is acceptable.</li> <li>As far as possible protect site from fire.</li> <li>Avoid ground disturbance including handtools, dozers.</li> <li>Avoid water bombing which may cause ground disturbance.</li> <li>Avoid ground disturbance including handtools, dozers.</li> <li>Avoid water bombing which may cause ground disturbance.</li> <li>Site may be burnt by wildfire, backburn, prescribed burn.</li> </ul>
A1	
A2	
A3	
Historic Heritage Management (NPWS FMM 4.10)	<ul style="list-style-type: none"> <li>In areas where the asset may be in or close to a water body, wetland or swamp, no foam or retardant is to be used.</li> <li>Earth-moving machinery is to be used around, rather than over, through assets.</li> </ul>
HS1	<ul style="list-style-type: none"> <li>High RCHMS* priority.</li> <li>Avoid fire, including wildfire, backburning &amp; HR.</li> <li>Avoid all water bombing activities.</li> </ul>
HS2	<ul style="list-style-type: none"> <li>High RCHMS* priority.</li> <li>Avoid fire, including wildfire, backburning &amp; HR.</li> <li>High or low RCHMS* priority.</li> <li>Heritage site unlikely to be affected by fire.</li> </ul>
HS3	<ul style="list-style-type: none"> <li>Low RCHMS* priority.</li> <li>Avoid fire, including wildfire, backburning &amp; HR.</li> <li>Heritage site unlikely to be affected by fire.</li> </ul>
HS4	<ul style="list-style-type: none"> <li>High or low RCHMS* priority.</li> <li>Avoid fire, including wildfire, backburning &amp; HR.</li> <li>Avoid all water bombing activities.</li> </ul>
HS5	<ul style="list-style-type: none"> <li>Low RCHMS* priority.</li> <li>Avoid fire, including wildfire, backburning &amp; HR.</li> <li>High or low RCHMS* priority.</li> <li>Heritage site unlikely to be affected by fire.</li> </ul>
HS6	<ul style="list-style-type: none"> <li>High or low RCHMS* priority.</li> <li>Avoid fire, including wildfire, backburning &amp; HR.</li> <li>Avoid use of earth moving machinery.</li> </ul>
HS7	<ul style="list-style-type: none"> <li>High or low RCHMS* priority.</li> <li>Heritage site unlikely to be affected by fire.</li> <li>Avoid use of earth moving machinery.</li> <li>Avoid all water bombing activities.</li> </ul>

**Threatened Flora Fire Ecology**

Species	Prescription
Callistemon inaequalis (V)	PB.7,M.0
Eucalyptus cannonii (V)	PB.5,M.0
Grevillea obtusiflora (E)	PB.10,M.0
Phaenolax bifidum (E)	NR
Prostanthera stricta (V)	PB.7,M.0
Pultenaea sp. Genowilan Point (E)	NR

**Threatened Fauna Fire Ecology**

Species	Prescription
Anthochaera phrygia, Regent Honeyeater (E)	NR
Callipepla fimbriatum, Gang-gang Cockatoo (V)	NR
Calyptrornis lathamii, Glossy Black-Cockatoo (V)	NR
Chalinobius dwyeri, Large-eared Pied Bat (V)	PB.0,RS,M.0,NS
Chthonicola sagittata, Speckled Warbler (V)	NR
Climacteris picumnus variegata, Brown Treecreeper (eastern subspecies) (V)	M.0
Daphnositta chrysoptera, Varied Sittella (V)	NR
Glossospitta pusilla, Little Lorikeet (V)	NR
Hieraeetus morphnoides, Little Eagle (V)	NR
Ixobrychus flavicollis, Black Bittern (V)	PB.7,M.0
Melanodryas cucullata cucullata, Hooded Robin (south-eastern form) (V)	NR
Melanodryas cucullata cucullata, Hooded Robin (eastern form) (V)	NR
Meliphreptus gularis gularis, Black-chinned Honeyeater (eastern subspecies) (V)	NR
Neophema pulchella, Turquoise Parrot (V)	NR
Ninox connexus, Barking Owl (V)	NS,M.0,NS
Ninox strenua, Powerful Owl (V)	NS,M.0,NS
Petroica boodang, Scarlet Robin (V)	NR
Petroica phoenicea, Flame Robin (V)	NR
Pteropus poliocephalus, Grey-headed Flying-fox (V)	PB.0,RS,M.0,RS
Stagonopleura guttata, Diamond Firetail (V)	M.0
Tyto tenebricosa, Sooty Owl (V)	PB.0,NS,M.0

**Prescription Code (Bushfire Environmental Assessment Code Threatened Species Guidelines NSW RFS 2013)**

Code: XX.XX.XX Definition: Activity, Frequency, Restrictions

Example: PB.10.520m W, M.0.50m RS

1. Prescribed Burn, Minimum every 10 years, >20m from water

2. Mechanical works, Never, <50m of a root site

**Activities**

Code	Description	Code	Description	Restrictions	Description
PB	Prescribed Burn	al	adjacent	E	Epithermal Water Course
M	Mechanical Reduction	LS	Know Location	R	River
SI	Slashing	RS	Roost Site	W	Water Body
TR	Trampling	NS	Nesting Site	Sw	Swamp
TB	Tree Removal	H	Hollows	MCH	Moist Grass Habitats
LR	Log Removal	S	Stream	AC	Allocasuarina Thicket

**Other**

Code	Description	Restrictions	Description
NR	Not Recorded (Species not included in BEAC)	NS	Not Specified, no prescriptions defined in BEAC