

Hunter Region Columby National Park Fire Management Strategy (Type 2) 2009

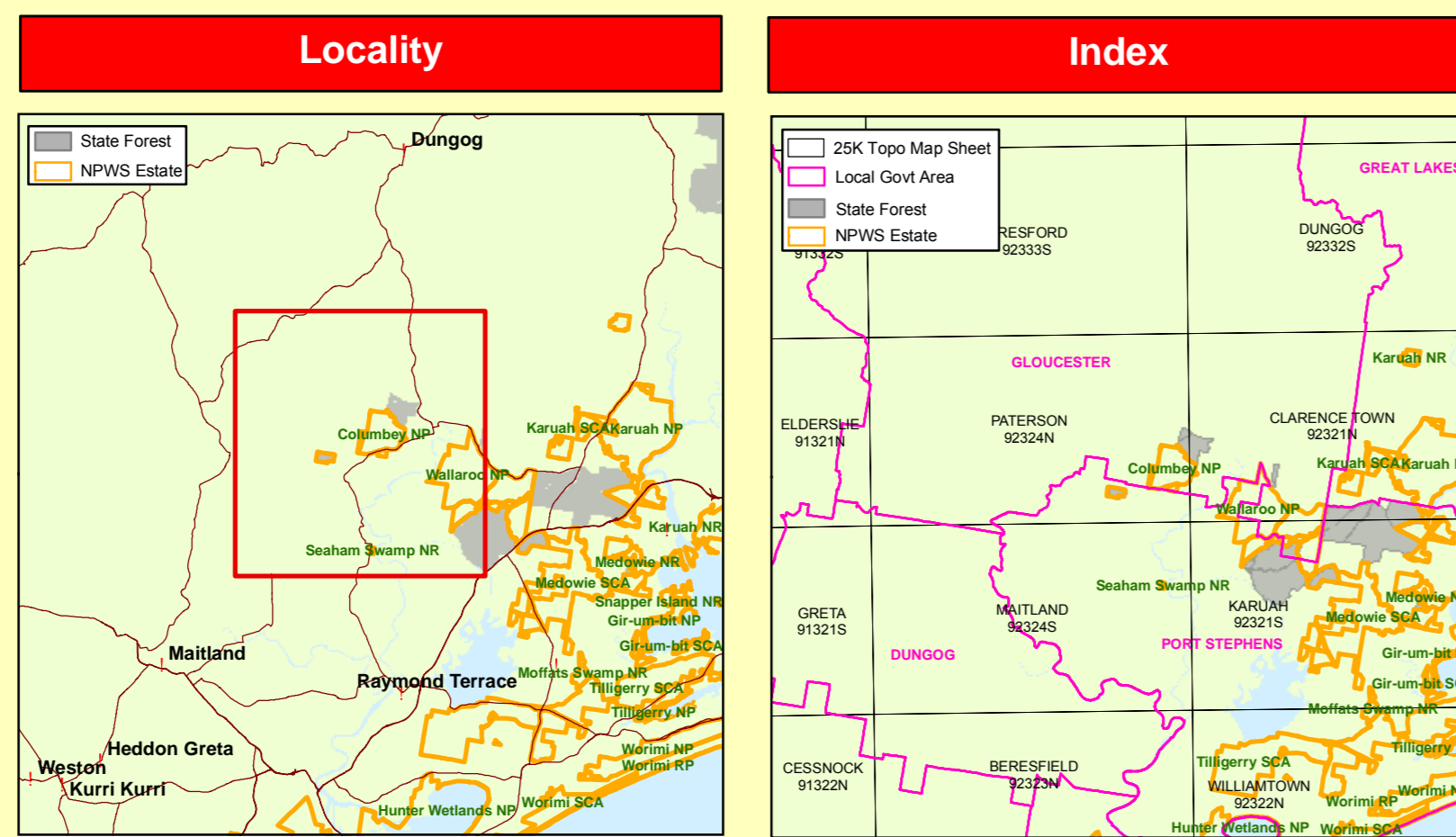
Sheet 1 of 1

This strategy should be used in conjunction with aerial photography and field reconnaissance during incidents and the development of incident action plans.

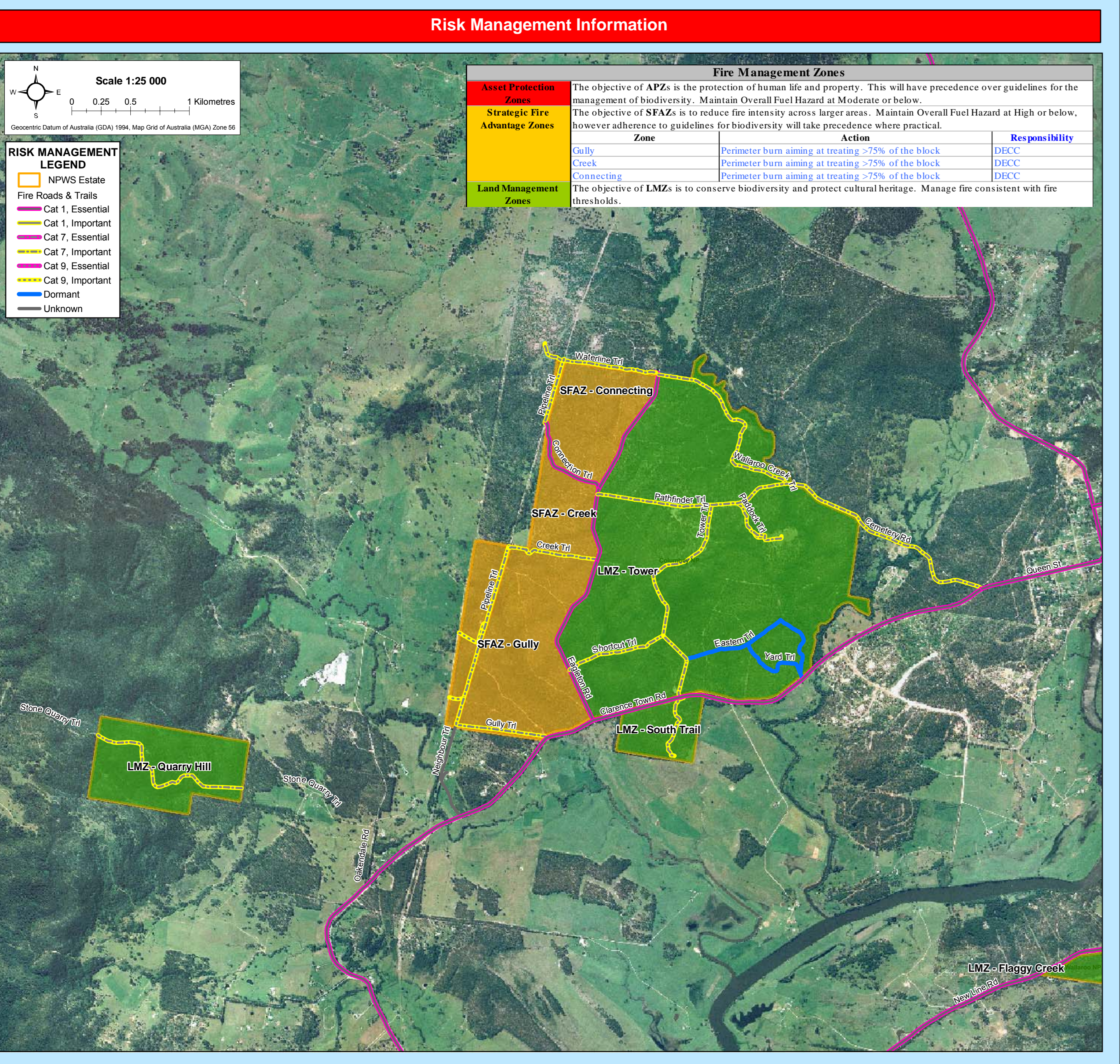
These data are not guaranteed to be free from error or omission. The NSW National Parks and Wildlife Service and its employees accept liability for any errors or omissions in the data or the strategy. This document is copyright. Apart from any fair dealing for the purpose of study, research, criticism or review, as permitted under the copyright Act, no part may be reproduced by any process without written permission. The NSW National Parks and Wildlife Service is part of the Department of Environment and Climate Change. Published by the Department of Environment and Climate Change (NSW), every month and year here. Contact: NSW National Parks and Wildlife Service, Hunter Region Locked Mail 99 Hunter Hwy 23116. ISBN: 978 1 74122656 0 DEC Number: 2007/546 Law Underpin: 17/09

Endorsed by: John O'Gorman Date: 15 06 2009

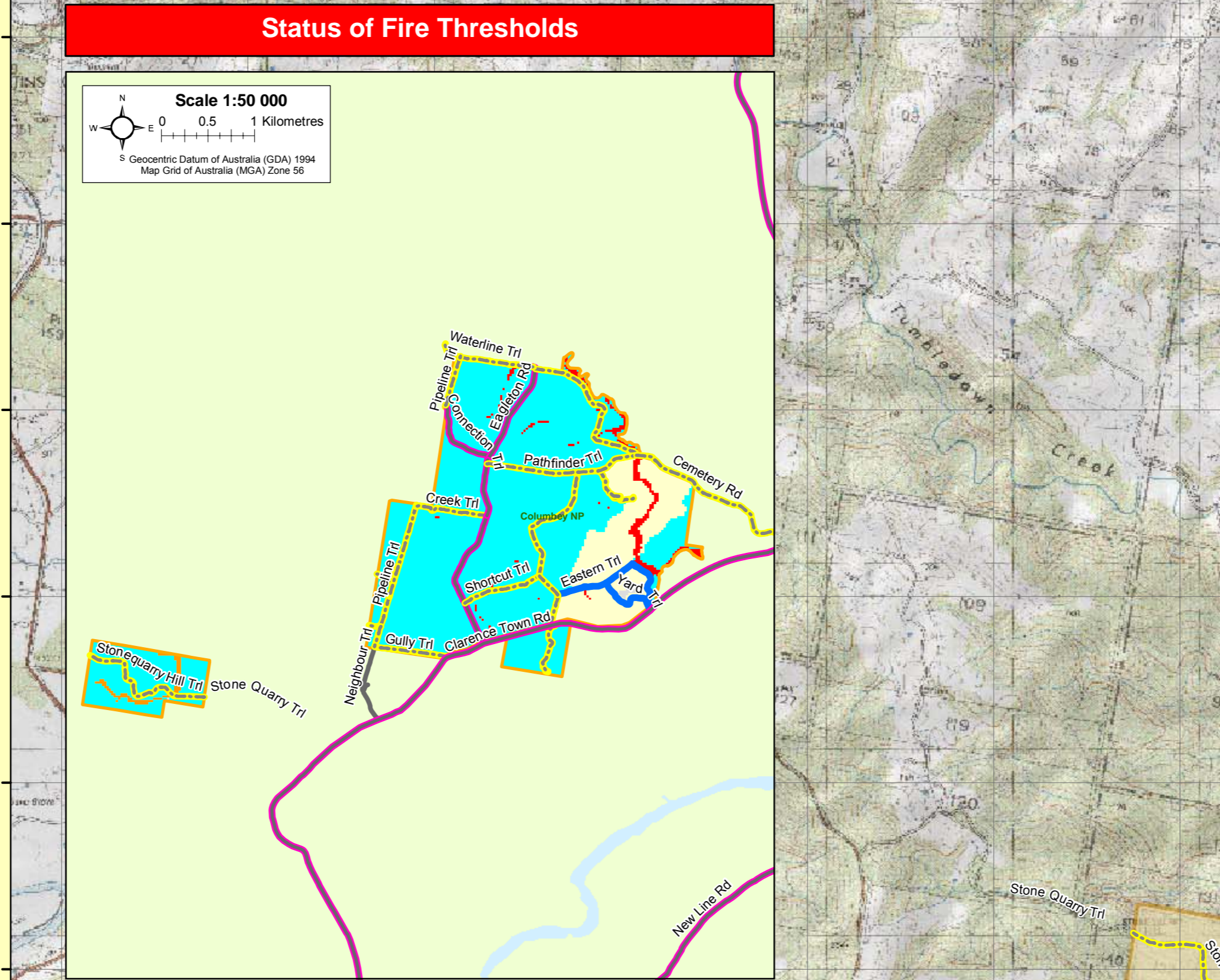
Director, National Parks & Wildlife Group



Resource	Guidelines
Operational Guidelines	Refer to the Fire Management Manual Brief all personnel involved in suppression operations on the following issues:
Aboriginal Cultural Heritage Site Management	Insert reserve specific guidelines for known sites (select from/modify following noting restricted activities): <ul style="list-style-type: none"> A1 - As far as possible protect site from fire. Do not cut down trees. A2 - As far as possible, protect site from fire. Avoid all ground disturbance including the use of earthmoving machinery, handline construction and driving over sites. Avoid water bombing which may cause ground disturbance. A3 - Avoid all ground disturbance. Avoid water bombing. Site may be burnt by bushfire, back-burn or prescribed burn without damage.
Historic Heritage Management	No known sites in Reserve. If new sites are located consult with a senior NPWS officer. Insert reserve specific guidelines for known sites (select from/modify following noting restricted activities): <ul style="list-style-type: none"> H1 - As far as possible protect site from fire. Avoid all ground disturbance including the use of earthmoving machinery, handline construction and driving over sites. Avoid water bombing which may damage site. H2 - As far as possible protect site from fire. Avoid all ground disturbance including the use of earthmoving machinery, handline construction and driving over sites. H3 - High or low RCHMS* priority. Heritage site unlikely to be affected by fire. Danger to any fire crew activity. Avoid site at all costs. H4 - Low RCHMS* priority. Heritage site unlikely to be affected by fire. Avoid use of earth moving machinery. H5 - Low RCHMS* priority. Avoid fire, including wildfire, backburning & HR. H6 - High or low RCHMS* priority. Heritage site unlikely to be affected by fire. Avoid use of earth moving machinery. H7 - High or low RCHMS* priority. Heritage site unlikely to be affected by fire. Avoid use of earth moving machinery. Avoid all water bombing activities.
Threatened Fauna Management	No known sites in Reserve. If new sites are located consult with a senior NPWS officer. Insert reserve specific guidelines for known sites (select from/modify following noting restricted activities): <ul style="list-style-type: none"> FA1 - As far as possible, protect large and hollow-bearing trees in locations where these species are known to occur. FA2 - As far as possible, protect large and hollow-bearing trees in locations where these species are known to occur. Avoid use of earth moving machinery in locations where these species are known to occur. FA3 - Avoid inter-fire intervals of < 10 yrs. FA4 - Habitat unlikely to be affected by fire. Avoid use of earth moving machinery in wetland habitats. Avoid use of retardant and foam in wetland habitats. FA5 - Habitat unlikely to be affected by fire. Avoid use of earth moving machinery in dune habitats. FA6 - Avoid fire, including wildfire, backburning & HR, as far as possible in wetland habitats. Avoid use of earth moving machinery in wetland habitats. Avoid use of retardant and foam in wetland habitats. FA7 - Avoid high intensity fires that consume tree canopies and fallen logs. FA8 - Avoid fire, including wildfire, backburning & HR, as far as possible. Avoid use of earth moving machinery.
Threatened Flora Management	No known sites in Reserve. If new sites are located consult with a senior NPWS officer. Insert reserve specific guidelines for known sites (select from/modify following noting restricted activities): <ul style="list-style-type: none"> FL1 - Avoid inter-fire intervals of < 10 years in locations where these species are known to occur. Avoid the use of earth moving machinery in locations where these species are known to occur. Avoid the use of retardant in locations where these species are known to occur. FL2 - As far as possible, exclude all fire from locations where these species are known to occur. Avoid the use of earth moving machinery in locations where these species are known to occur. Avoid the use of retardant in locations where these species are known to occur. FL3 - Avoid high intensity fire. Avoid inter-fire intervals of < 10 years, effect unknown. Avoid the use of earth moving machinery. FL4 - Avoid summer fire. Avoid high intensity fire. Avoid earth moving machinery. FL5 - Avoid low intensity fire. Avoid inter-fire intervals of < 5 yrs. Avoid earth moving machinery. Avoid the use of retardant.
Threatened Property	No known sites in Reserve. If new sites are located consult with a senior NPWS officer. Insert reserve specific guidelines for known sites (select from/modify following noting restricted activities): <ul style="list-style-type: none"> Where possible property owners with assets at risk from a wildfire event should be kept informed regarding the progress of the fire, and asked for an assessment of their current level of asset protection preparedness.

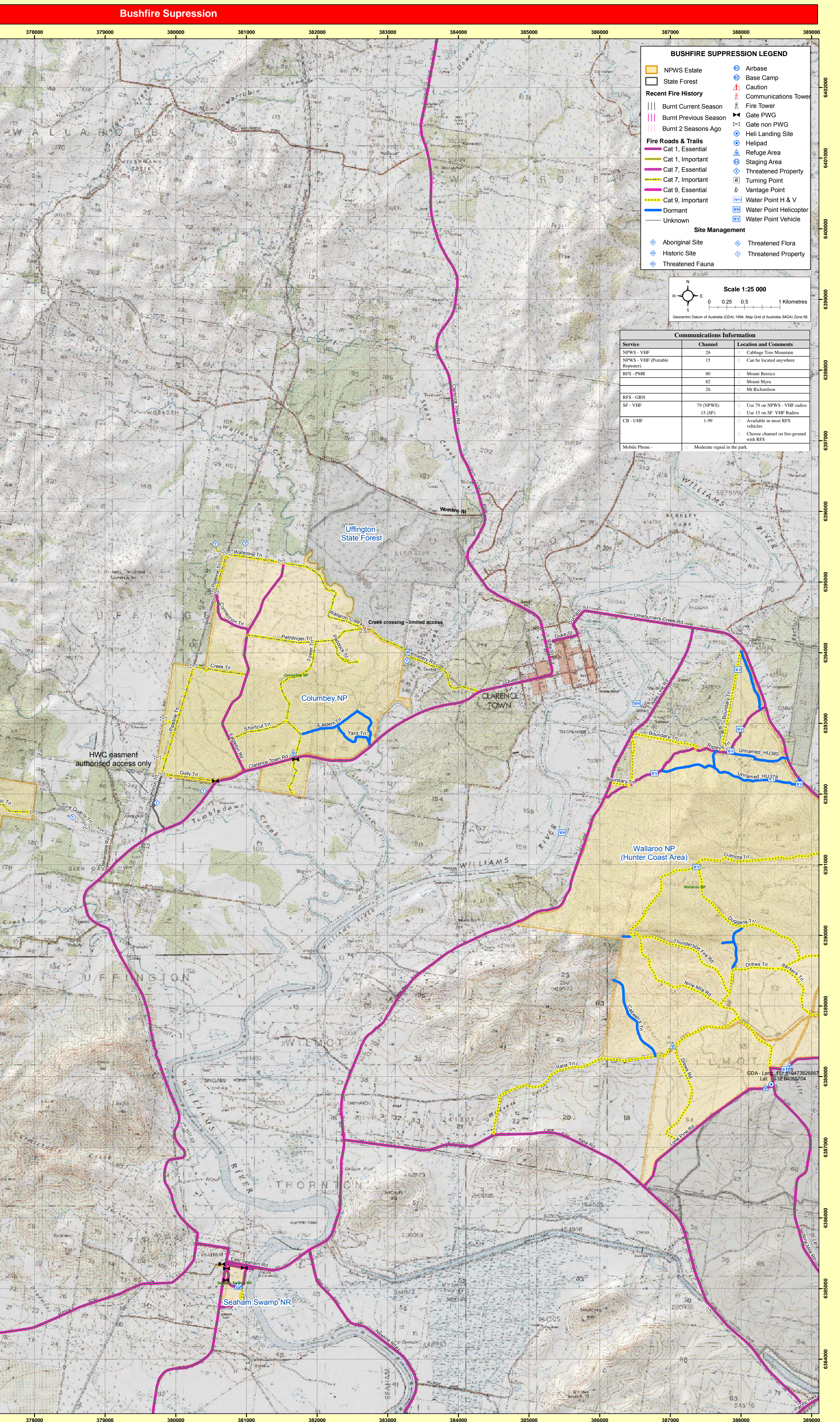
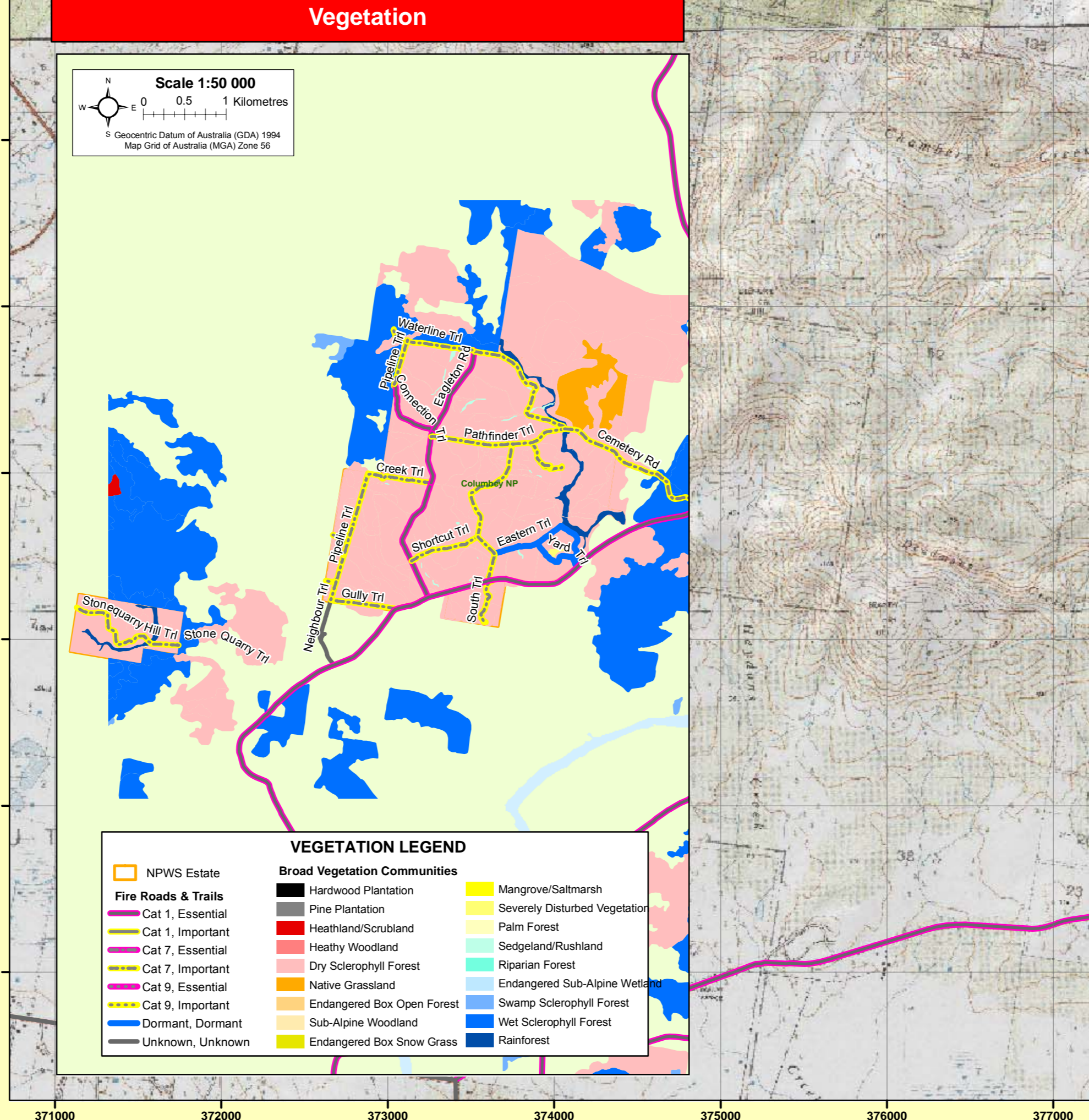


Strategy Information		Contact Information	
Wildfires	<p>Reserves of the Hunter Region are located in a zone between subtropical, summer maximum rainfall patterns to the north and temperate, winter maximum patterns to the south.</p> <p>Most extreme fire weather conditions occur during spring and early summer resulting in moderate temperatures, low relative humidity and strong winds.</p> <p>Subtropical rainfall in January usually ends the fire season in most years, however, if rain events do not occur the fire season may last from August to March.</p>	<p>NPWS</p> <p>Hunter Region Duty Officer (24hr) Barrington Tops Area Manager Fire Management Officer Regional Operations Coordinator Barrington Tops Area Office Hunter Regional Office</p> <p>RFS</p> <p>Glossop Fire Control Centre Post Stephens Fire Control Centre</p> <p>NSW Fire Brigade</p> <p>Dugong Fire Control Centre Newcastle Communications (24hr)</p> <p>SES</p> <p>Glossop Fire Control Centre</p> <p>Police</p> <p>Emergency Glossop Fire Control Centre</p> <p>Ambulance</p> <p>Emergency Bookings</p> <p>Hospital</p> <p>Glossop Fire Control Centre John Hunter, Newcastle</p> <p>DOP</p> <p>Newcastle</p> <p>DPI - Forests</p> <p>Hunter Region Office Maitland</p> <p>Council</p> <p>Glossop Shire Dugong Shire Forster (Glossop Fire Control Centre)</p> <p>Local Aboriginal Land Council</p> <p>Karahi (Myall Lakes / Williams River / Dugong)</p>	
Prescribed Burning	<p>General season is Autumn to late Winter due to low fire risk and lower ecological impact, however burning is not desirable on a regular basis from a tourism point of view.</p> <p>Burning is possible in early Spring under wet weather conditions, but is not desirable on a regular basis from an ecological or tourism point of view.</p>	<p>Phone</p> <p>016 301161 / 0429 144880 65383301 / 0429 144873 4984 8206 / 0429 144878 4984 8212 / 0429 144872 65383300 (fax) / 6552476 4984 8200 / (fax) 4981 5913 6558109 (24hr) 65589222 (Bk) 650059222 (fax) 65581223 4980 7300 / 4980 7300 (Aks) (fax) 4983 1355 4992 3200 / (fax) 4992 3203 000 4929 7177 / (fax) 4927 2580 000 65581788 / (fax) 65581636 000 65581204 / fax 65582629 131 233 65581307 4921 3000 4929 5346 / (fax) 4929 6364 0412 258 320 4931 6519 / (fax) 4931 0772 0429 491 868 65383250 / 041747963 Aft 49921224 / 0407721224 Aft 6555 5411 4997 5733</p>	
Current FDR	Forecast FDR	<p>Under take direct, parallel or indirect attack along existing containment lines taking advantage of natural fire control advantages.</p> <p>Where practicable consider maximizing the fire area in accordance with the requirements of any proposed prescribed burn.</p> <p>Identify and survey back-up control lines.</p> <p>In order to minimize the fire area and secure the flanks as soon as possible, undertake direct, parallel or indirect attack along the closest containment lines.</p> <p>Pay particular attention to the flank on the most predicted down wind side.</p> <p>Identify and survey back-up control lines.</p> <p>Construct new control lines if necessary to minimize the time to contain the fire.</p> <p>Under take indirect attack along existing or newly constructed containment lines.</p> <p>Secure and deepen containment lines along the next predicted downwind side.</p> <p>If applicable consider broader than normal containment strategies to avoid wasted effort and high risk of failure.</p> <p>Ensure there is sufficient time to secure containment lines prior to the fire impacting upon them, otherwise fall back to the next potential line.</p>	
Low - Mod	Low - Mod	<p>Under take direct, parallel or indirect attack along existing containment lines taking advantage of natural fire control advantages.</p> <p>Where practicable consider maximizing the fire area in accordance with the requirements of any proposed prescribed burn.</p> <p>Identify and survey back-up control lines.</p> <p>In order to minimize the fire area and secure the flanks as soon as possible, undertake direct, parallel or indirect attack along the closest containment lines.</p> <p>Pay particular attention to the flank on the most predicted down wind side.</p> <p>Identify and survey back-up control lines.</p> <p>Construct new control lines if necessary to minimize the time to contain the fire.</p> <p>Under take indirect attack along existing or newly constructed containment lines.</p> <p>Secure and deepen containment lines along the next predicted downwind side.</p> <p>If applicable consider broader than normal containment strategies to avoid wasted effort and high risk of failure.</p> <p>Ensure there is sufficient time to secure containment lines prior to the fire impacting upon them, otherwise fall back to the next potential line.</p>	
Low - Mod	=> High	<p>Under take direct, parallel or indirect attack along existing containment lines taking advantage of natural fire control advantages.</p> <p>Where practicable consider maximizing the fire area in accordance with the requirements of any proposed prescribed burn.</p> <p>Identify and survey back-up control lines.</p> <p>In order to minimize the fire area and secure the flanks as soon as possible, undertake direct, parallel or indirect attack along the closest containment lines.</p> <p>Pay particular attention to the flank on the most predicted down wind side.</p> <p>Identify and survey back-up control lines.</p> <p>Construct new control lines if necessary to minimize the time to contain the fire.</p> <p>Under take indirect attack along existing or newly constructed containment lines.</p> <p>Secure and deepen containment lines along the next predicted downwind side.</p> <p>If applicable consider broader than normal containment strategies to avoid wasted effort and high risk of failure.</p> <p>Ensure there is sufficient time to secure containment lines prior to the fire impacting upon them, otherwise fall back to the next potential line.</p>	
High	All	<p>Under take direct, parallel or indirect attack along existing containment lines taking advantage of natural fire control advantages.</p> <p>Where practicable consider maximizing the fire area in accordance with the requirements of any proposed prescribed burn.</p> <p>Identify and survey back-up control lines.</p> <p>In order to minimize the fire area and secure the flanks as soon as possible, undertake direct, parallel or indirect attack along the closest containment lines.</p> <p>Pay particular attention to the flank on the most predicted down wind side.</p> <p>Identify and survey back-up control lines.</p> <p>Construct new control lines if necessary to minimize the time to contain the fire.</p> <p>Under take indirect attack along existing or newly constructed containment lines.</p> <p>Secure and deepen containment lines along the next predicted downwind side.</p> <p>If applicable consider broader than normal containment strategies to avoid wasted effort and high risk of failure.</p> <p>Ensure there is sufficient time to secure containment lines prior to the fire impacting upon them, otherwise fall back to the next potential line.</p>	
All	All	<p>Under take direct, parallel or indirect attack along existing containment lines taking advantage of natural fire control advantages.</p> <p>Where practicable consider maximizing the fire area in accordance with the requirements of any proposed prescribed burn.</p> <p>Identify and survey back-up control lines.</p> <p>In order to minimize the fire area and secure the flanks as soon as possible, undertake direct, parallel or indirect attack along the closest containment lines.</p> <p>Pay particular attention to the flank on the most predicted down wind side.</p> <p>Identify and survey back-up control lines.</p> <p>Construct new control lines if necessary to minimize the time to contain the fire.</p> <p>Under take indirect attack along existing or newly constructed containment lines.</p> <p>Secure and deepen containment lines along the next predicted downwind side.</p> <p>If applicable consider broader than normal containment strategies to avoid wasted effort and high risk of failure.</p> <p>Ensure there is sufficient time to secure containment lines prior to the fire impacting upon them, otherwise fall back to the next potential line.</p>	

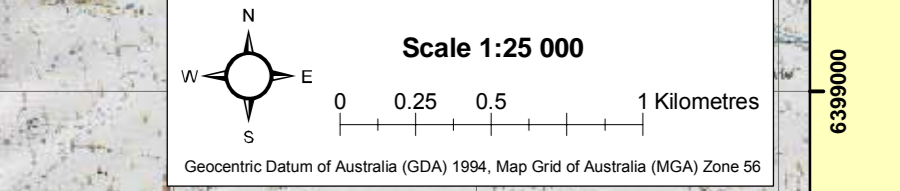


Fire Threshold	Description
Overburn	Fire thresholds have been exceeded. <i>Protect from fire as far as possible.</i>
Vulnerable	The area will be Overburnt if it burns this year. <i>Protect from fire as far as possible.</i>
Recently Burnt	Time since fire is less than the optimum interval, but before that it was within threshold. <i>Avoid fire if possible.</i>
Within Threshold	Fire history is within the threshold for vegetation in this area. <i>A burn is neither required nor should one necessarily be avoided.</i>
Almost Underburnt	The area is close to its threshold and may become underburnt with the absence of fire. <i>A prescribed burn may be advantageous. Consider allowing unplanned fires to burn.</i>
Underburnt	Fire frequency is below fire thresholds in the area. <i>A prescribed burn may be advantageous. Consider allowing unplanned fires to burn.</i>
Unknown	Insufficient data to determine fire threshold. <i>Insufficient data to determine fire threshold.</i>

NR: Fire thresholds are defined for vegetation communities to conserve biodiversity



BUSHFIRE SUPPRESSION LEGEND	
NPWS Estate	Airbase
State Forest	Base Camp
Recent Fire History	Caution
Burnt Current Season	Communications Tower
Burnt Previous Season	Fire Tower
Burnt 2 Seasons Ago	Gate PWG
Cat 1, Essential	Heli Landing Site
Cat 1, Important	Helipad
Cat 7, Essential	Refuge Area
Cat 7, Important	Threatened Property
Cat 8, Essential	Turning Point
Cat 8, Important	Vantage Point
Dominant	Water Point H & V
Unknown	Water Point Helicopter
Unknown	Water Point Vehicle



Communications Information		
Service	Channel	Location and Comments
NPWS - VHF	26	Cabbage Tree Mountain
NPWS - VHF (Portable Repeaters)	13	Can be heard anywhere
RFS - PMR	80	Moam Barrow
RFS - PMR	82	Moam Moss
RFS - PMR	26	Mo Richardson
RFS - GBN		
SP - VHF	79 (NPWS)	Use 79 on NPWS - VHF radios
SP - VHF	11 (RFS)	Use 11 on RFS - VHF radios
CB - UHF	1.99	Available to most RFS vehicles
		Choose channel on fireground with RFS
Mobile Phone		Midnight signal in the park