

### Hunter Region Crawney Pass National Park & Wallabadah Nature Reserve Fire Management Strategy (Type 2) 2009

Sheet 1 of 1

This strategy should be used in conjunction with aerial photography and field reconnaissance during incidents and the development of incident action plans.

These data are not guaranteed to be free from error or omission. The NSW National Parks and Wildlife Service and its employees disclaim liability for any act done or the information in this data and any consequences of such acts or omissions.

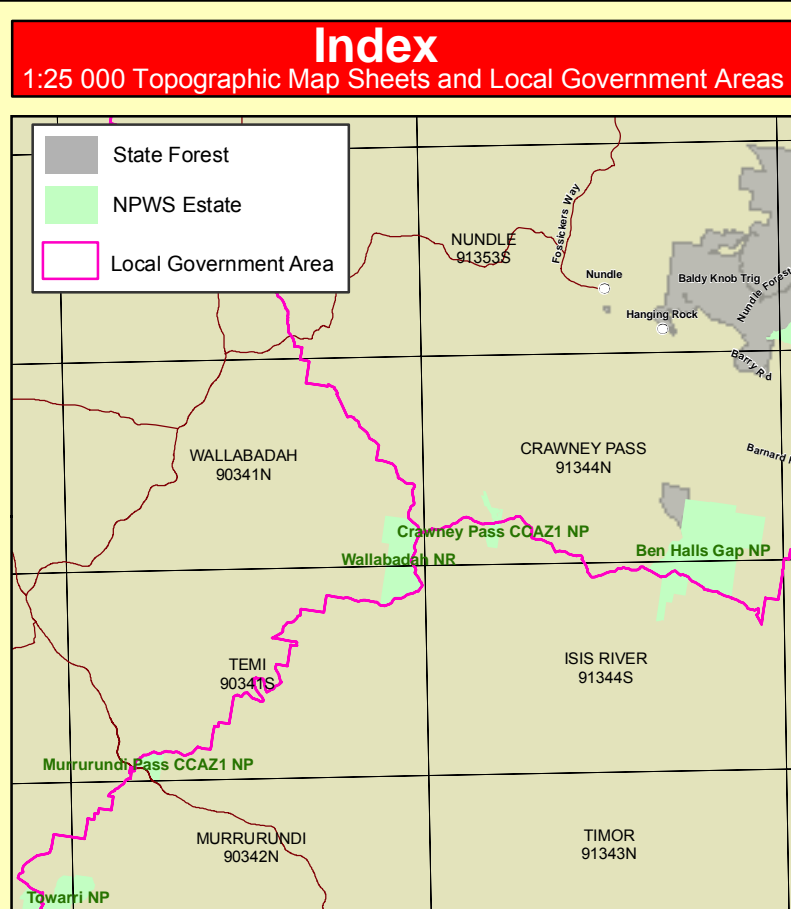
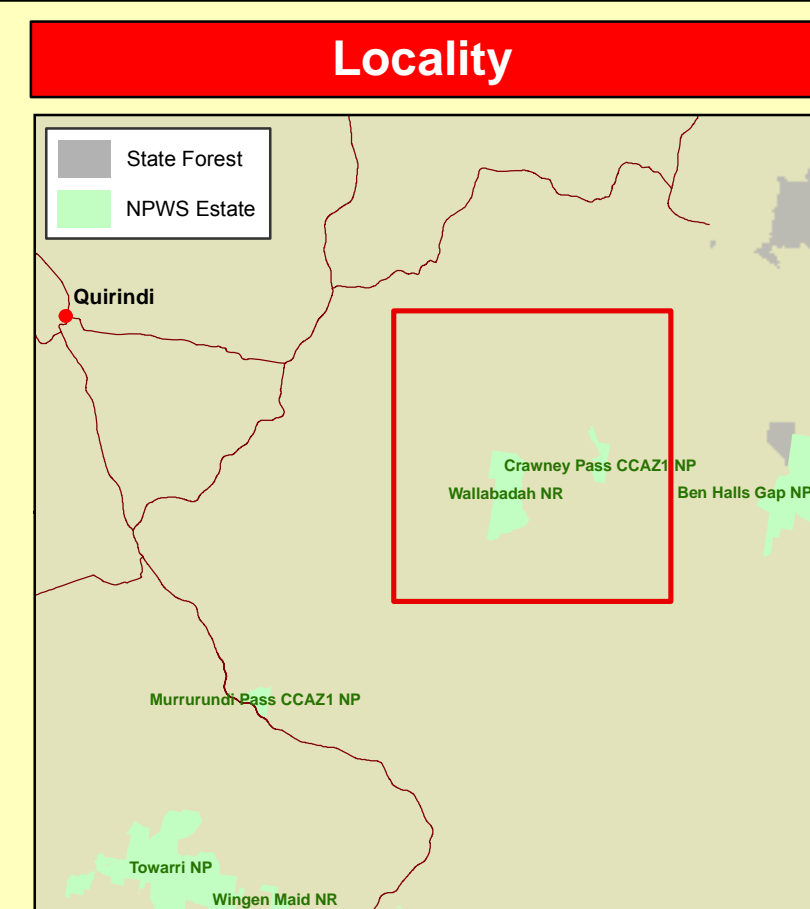
This document is copyright. Apart from any use permitted for the purposes of library, research, education or review, as permitted under copyright law, no part may be reproduced by any process without written permission.

The NSW National Parks and Wildlife Service is part of the Department of Environment and Climate Change.  
Published by the Department of Environment and Climate Change (NSW), February 2009.  
Contact: NSW National Parks and Wildlife Service, Hunter Region Locked Mail 99 Maitland Bay DC 2315  
ISBN: 978 1 741226546 DECC Number: 2007/542 Last Updated: 17/04/09

This strategy is a relevant plan under Section 38 (4) and Section 44 (3) of Rural Fires Act 1997.

Endorsed by: \_\_\_\_\_ Date: / /

Director Northern Parks & Wildlife Group



### Contact Information

Agency	Position / Location	Phone
NPWS	Hunter Region Duty Officer (24hr)	0623 244350
	Upper Hunter Area Manager	06452300 / 0429144876
	Fire Management Officer	0494 8206 / 0429 144870
	Regional Operations Coordinator	0494 8212 / 0429 144870
	Upper Hunter Area Office	06452300 / (fax) 064549475
RFS	Liverpool Range Fire Control Centre	0252471903 / (fax) 1800 081166
	Tarnworth Fire Control Centre	07627611 (24h)
NSW Fire Brigade	Emergency	000
	Newcastle Communications (24hr)	0492 7177 / (fax) 4927 2580
SES	Emergency	000
	Score	06453300 / (fax) 06452160
Police	Emergency	000
	Score	0644 0199 / (fax) 064543190
Ambulance	Emergency	000
	Bookings	131 233
Hospital	Score	06402100
	Maitland (no emergency section)	06450600
DPI - Forests	Hunter Region Office Maitland	0931 6519 / (fax) 4933 9772
	Upper Hunter Shire	06493700 / (fax) 06452671
Council	Liverpool Plains	06453096 (A8)
	Tarnworth Regional	06431288
Local Aboriginal Land Council	Wamangoo	07462356 / (fax) 07462670
	Nungahoo	

### Operational Guidelines (continued)

Refer to Current Fire Management Manual (updated annually)

Brief all personnel involved in suppression operations on the following issues:

**Resource**

**Historic Heritage Management (continued)**

**HIS1** High RCHMS\* priority. Avoid fire, including wildfire, backburning & PB. High RCHMS\* priority. Heritage site unlikely to be affected by fire. Avoid use of earth moving machinery. Avoid all water bombing activities.

**HIS2** High RCHMS\* priority. Avoid fire, including wildfire, backburning & PB. High RCHMS\* priority. Heritage site unlikely to be affected by fire. Avoid use of earth moving machinery. Avoid all water bombing activities.

**HIS3** High or low RCHMS\* priority. Heritage site unlikely to be affected by fire. Danger to any fire crew activity. Avoid site at all costs.

**HIS4** Low RCHMS\* priority. Avoid fire, including wildfire, backburning & PB. Avoid all water bombing activities.

**HIS5** Low RCHMS\* priority. Avoid fire, including wildfire, backburning & PB. Avoid all water bombing activities.

**HIS6** High or low RCHMS\* priority. Heritage site unlikely to be affected by fire. Avoid use of earth moving machinery.

**HIS7** High or low RCHMS\* priority. Heritage site unlikely to be affected by fire. Avoid use of earth moving machinery.

**Threatened Fauna Management**

**FA1** Protect large and hollow bearing trees. Avoid fire, including wildfire, backburning & PB. Avoid high intensity fires that consume tree canopy and hollow logs.

**FA2** Protect large and hollow bearing trees. Avoid fire, including wildfire, backburning & PB. Avoid high intensity fires that consume tree canopy and hollow logs.

**FA3** Habitat unlikely to be affected by fire. Avoid use of earth moving machinery in wetland habitats.

**FA4** Habitat unlikely to be affected by fire. Avoid use of earth moving machinery in wetland habitats.

**FA5** Habitat unlikely to be affected by fire. Avoid use of earth moving machinery in dune habitats.

**FA6** Avoid fire, including wildfire, backburning & HR, as far as possible in wetland habitat. Avoid use of earth moving machinery in wetland habitats.

**FA7** Avoid high intensity fires that consume tree canopy and hollow logs.

**FA8** Avoid fire, including wildfire, backburning & HR, as far as possible. Avoid use of earth moving machinery.

**Threatened Flora Management**

**FL1** Avoid fire, including wildfire, backburning & HR, as far as possible. Avoid the use of earth moving machinery. Avoid use of retardant.

**FL2** Avoid fire, including wildfire, backburning & HR, as far as possible. Avoid the use of earth moving machinery. Avoid use of retardant.

**FL3** Avoid high intensity fires that consume tree canopy and hollow logs. Avoid the use of earth moving machinery.

**FL4** Avoid high intensity fire. Avoid earth moving machinery.

**FL5** Avoid low intensity fire. Avoid fire, including wildfire, backburning & HR, as far as possible. Avoid earth moving machinery. Avoid the use of retardant.

### Operational Guidelines (continued)

Refer to Current Fire Management Manual (updated annually)

Brief all personnel involved in suppression operations on the following issues:

**Threatened Property**

**General**

**Aerial Water Bombing (NPWS FMM / NSW Fire Agencies Aviation SOPs Q2 / NPWS Guidelines for Effective Aircraft Management)**

**Aerial Ignition (NPWS FMM / NSW Fire Agencies Aviation SOPs Q2.4 / NPWS Guidelines for Effective Aircraft Management)**

**Backburning (NPWS FMM)**

**Command & Control (NPWS FMM)**

**Containment Lines (NPWS FMM)**

**Smoke Management (NPWS FMM)**

### Operational Guidelines

Refer to Current Fire Management Manual (updated annually)

Brief all personnel involved in suppression operations on the following issues:

**Resource**

**Aboriginal Cultural Heritage Site Management**

**A1** As far as possible protect site from fire. Do not cut down trees. Use of dams, wetting agents & retardant is not recommended.

**A2** As far as possible protect site from fire. Avoid ground disturbance including handhoes, shovels. Avoid water bombing which may cause ground disturbance. Site may be burnt by wildfire, backburn, smothered burn.

**A3** As far as possible protect site from fire. Avoid ground disturbance including handhoes, shovels. Avoid water bombing which may cause ground disturbance. Site may be burnt by wildfire, backburn, smothered burn.

**Historic Heritage Management**

**HIS1** High RCHMS\* priority. Avoid fire, including wildfire, backburning & PB. Avoid all water bombing activities.

### Operational Guidelines (continued)

Refer to Current Fire Management Manual (updated annually)

Brief all personnel involved in suppression operations on the following issues:

**Resource**

**Aboriginal Cultural Heritage Site Management**

**A1** As far as possible protect site from fire. Do not cut down trees. Use of dams, wetting agents & retardant is not recommended.

**A2** As far as possible protect site from fire. Avoid ground disturbance including handhoes, shovels. Avoid water bombing which may cause ground disturbance. Site may be burnt by wildfire, backburn, smothered burn.

**A3** As far as possible protect site from fire. Avoid ground disturbance including handhoes, shovels. Avoid water bombing which may cause ground disturbance. Site may be burnt by wildfire, backburn, smothered burn.

**Historic Heritage Management**

**HIS1** High RCHMS\* priority. Avoid fire, including wildfire, backburning & PB. Avoid all water bombing activities.

### Operational Guidelines (continued)

Refer to Current Fire Management Manual (updated annually)

Brief all personnel involved in suppression operations on the following issues:

**Resource**

**Aboriginal Cultural Heritage Site Management**

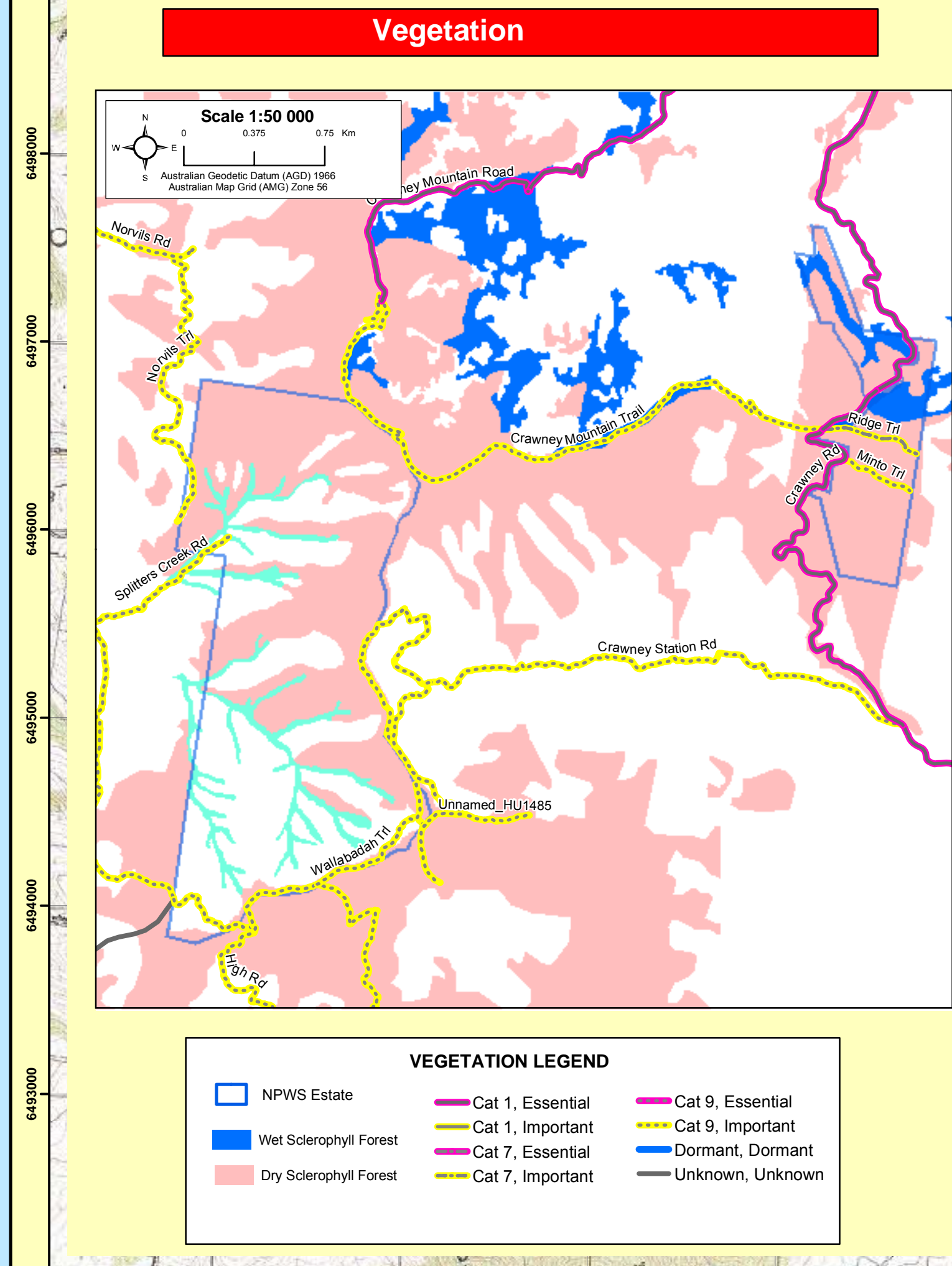
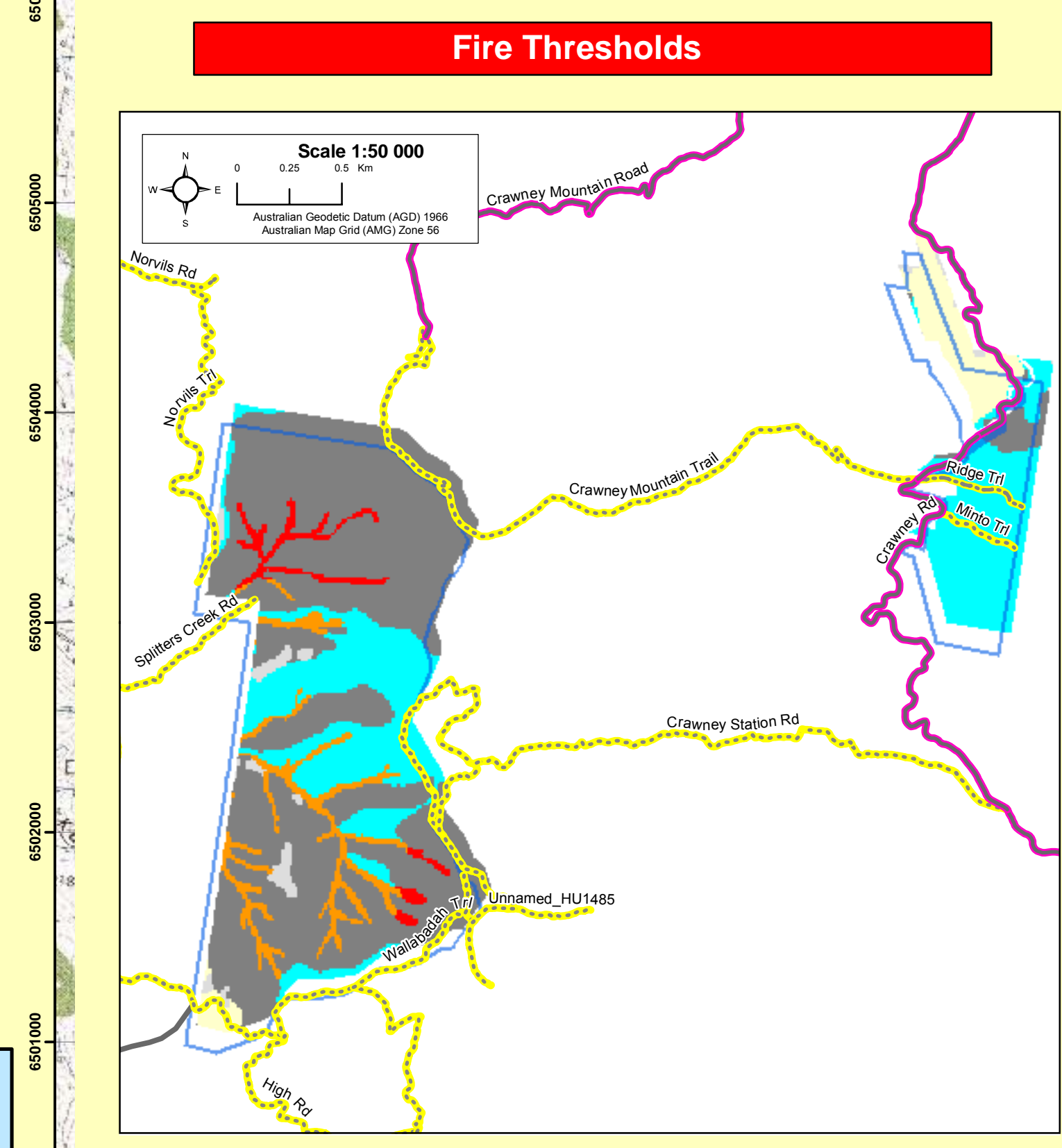
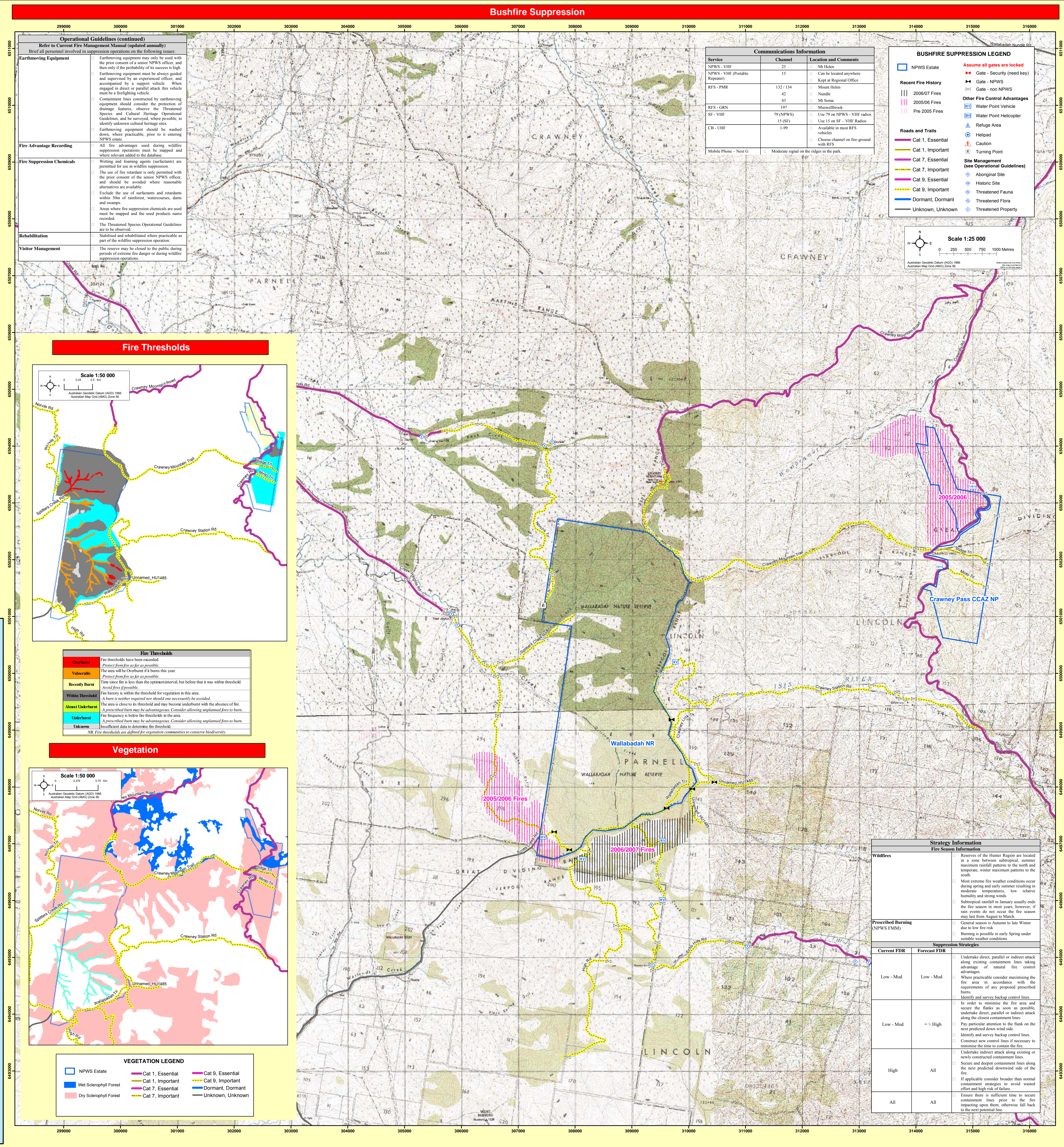
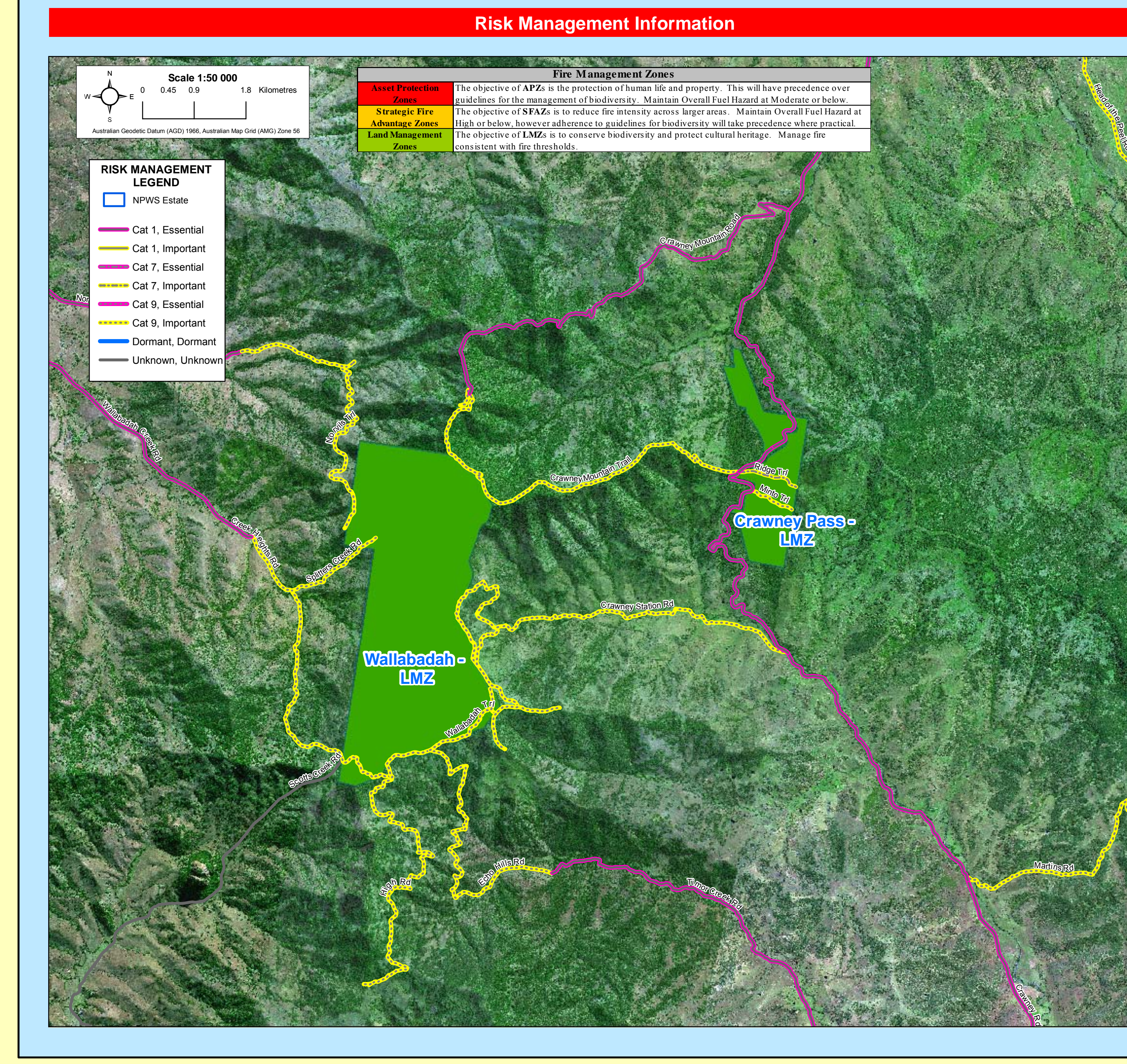
**A1** As far as possible protect site from fire. Do not cut down trees. Use of dams, wetting agents & retardant is not recommended.

**A2** As far as possible protect site from fire. Avoid ground disturbance including handhoes, shovels. Avoid water bombing which may cause ground disturbance. Site may be burnt by wildfire, backburn, smothered burn.

**A3** As far as possible protect site from fire. Avoid ground disturbance including handhoes, shovels. Avoid water bombing which may cause ground disturbance. Site may be burnt by wildfire, backburn, smothered burn.

**Historic Heritage Management**

**HIS1** High RCHMS\* priority. Avoid fire, including wildfire, backburning & PB. Avoid all water bombing activities.



### Strategy Information

**Fire Season Information**

**Wildfires**

Fire season of the Hunter Region are located in a zone between sub-tropical, summer maximum rainfall systems to the north and temperate, winter maximum patterns to the south. Most extreme fire weather conditions occur during spring and early summer resulting in moderate temperatures, low relative humidity and strong winds. Subsequent rainfall in January usually ends the fire season in most years, however, if rain events are sparse the fire season may last from August to March.

**Prescribed Burning (NPWS FMM)**

General season is Autumn to late Winter due to low fire risk. Burning is possible in early Spring under suitable weather conditions.

**Suppression Strategies**

**Current FDR**

Underburnt direct, parallel or indirect attack along existing containment lines taking advantage of natural fire control advantages. Where practicable consider maximising the fire area in accordance with the requirements of any proposed prescribed burns. Identify and survey backup control lines.

**Forecast FDR**

In order to minimise the fire area and secure the flanks as soon as possible, undertake direct, parallel or indirect attack along the closest containment lines. Pay particular attention to the flank on the next predicted down wind side. Identify and survey backup control lines. Construct new control lines if necessary to minimise the time to contain the fire.

Underburnt indirect attack along existing or newly constructed containment lines. Secure and deepen containment lines along the next predicted downwind side of the fire. If applicable consider broader than normal containment strategies to avoid wind effort and high risk of failure.

Ensure there is sufficient time to secure containment lines prior to the fire impacting upon them, otherwise fall back to the next potential line.