

Nymboida National Park & State Conservation Area

Fire Management Strategy (Type 2)

Sheet 1 of 2
2021 – 2026

This strategy should be used in conjunction with aerial photography and field reconnaissance. These data are not guaranteed to be free from error or omission. The NSW National Parks and Wildlife Service and its employees disclaim liability for any use of the data or the consequences of such use or reliance.

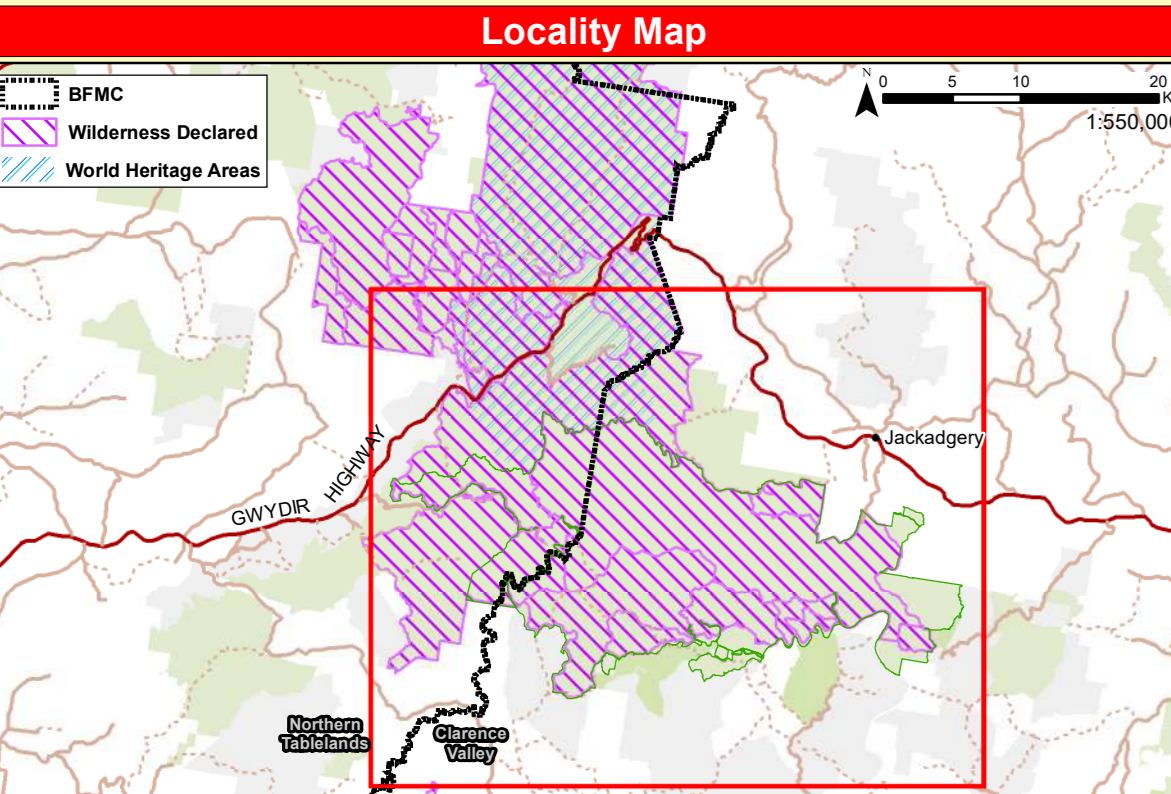
This document is copyright. Apart from any fair dealing for the purpose of study, research criticism or review, as permitted under the Copyright Act, no part may be reproduced by any process without written permission from the NSW National Parks and Wildlife Service.

Published by the Office of Environment and Heritage (NSW)
Contact: NSW National Parks and Wildlife Service, Northern Inland Branch

ISBN: 978-1-922493-49-1 DPIE Number: EES2020/0500 Last Updated: 01/07/2021

NSW

This strategy is a relevant Plan under Section 38 (4) and Section 44 (3) of the Rural Fires Act 1997.



Contact Information

Agency	Position / Location	Phone
National Parks & Wildlife Service Northern Inland	Area Manager - Clive Fitt Duty Officer (24 hours)	0427 212 226 8278 1742
National Parks & Wildlife Service North Coast	Northern Tablelands Area Office (Bus. hours) Area Manager - Andrew Lapp Duty Officer (24 hours)	0739 0700 0429 985 352 8278 1744
NSW Rural Fire Service	NT Zone Manager - Chris Watridge NT Duty Officer	0429 697 647 0739 8911
Northern Tablelands	NT Zone Office Tenterfield Office	0739 8903 0738 4150
Clarence Valley Zone	CV Zone Manager - Stuart Watts CV Duty Officer CV Zone Office	0408 669 825 6644 5135 6644 5135
Forest Corporation of NSW	Coffs Harbour Grafton State Duty Officer	6652 0111 6646 2222 9665 4375
Fire & Rescue NSW	Newcastle Control Centre	4929 7177
Emergency Services	Police, Fire, Ambulance	000
SES		132 500
Police	Glen Innes Grafton Tenterfield	672 9759 6642 0222 6728 1444
Council	Glen Innes Severn Clarence Valley Tenterfield	6730 2300 6641 0000 6736 8000
Local Aboriginal Land Council	Glen Innes LALC Berrigalong LALC	6733 1150 6647 2131

Communications

Service	Channel	Location and Comments
NPWS Repeaters	336	• Summit Mountain
Northern Inland	334	• North Vale Group
Repeaters	190	• Fire ground
Northern Inland	191	• Vase Group
North Coast	192	• Cargill East
FC NSW	194 (NPWS)	• Frog Hollow (Gibraltar and Plateau)
FC NSW	199 (NPWS)	• Cargill on Eastern Fall
RFNSW	80mhz radios	• NPWS holds 80mhz hand helds at Tenterfield and vehicle mounted at Armidale
Digital	N011	• Clarence Valley Digital Voice • Northern Tablelands Digital Voice
UHF - CB Northern Inland	UHF 17	• Small trees channel 10, large trees determined by MIT
UHF - North Coast	UHF 17	
Aviation - CTAF	134.70	• NIS frequency unless another frequency is allocated on an incident
Mobile		• The only option for mobile reception is the helipad on Kabe Mountain Trail
Satellite Phone	0147 165 975 0147 154 198	• Stored at Glen Innes

Fire Season Information

Wildfires
The critical wildfire season occurs during September to November. This period may extend into January if the normally reliable summer rainfall does not materialise. Particular care is required during periods of negative Southern Oscillation indices. The end of the critical fire season is often marked by wet storm activity.

Prescribed Burning
Fuel accumulation rates are generally high, and fire can carry through forest burn only several years previously. Prescribed burning is most effective in late winter and early spring where the combination of the rainfall and cool days from these months is available fuel loads. Autumn burns are possible, but rainfall events in this period can mean fuel moisture contents remain too high for effective hazard reduction burning.

Operational Guidelines

Aerial Operations

- Aerial operations will be managed by trained and competent personnel. This includes directing aerial bombing and aerial engine operations.
- The use of bombing aircraft without the support of ground-based suppression crews should be limited to very specific circumstances.
- All aerial ignition operations require the consent of a senior NPWS officer or the Section 44 Appointee.

Backburning

- All personnel must be fully briefed before back burning operations begin.
- Backburning in areas of Low - Moderate OHV will require the use of wind, or low humidity to maximise effectiveness.
- Where possible clear around dead and fibrous barked trees adjacent to control lines prior to backburning.

Command & Control

- The first combatant agency on site may assume control of the fire, but then must ensure the relevant land management agency is notified promptly.
- The initial Incident Controller will liaise with the RFS to ensure that the agency in command is determined and an Incident Controller is appointed.

Containment Lines

- New containment lines require the prior consent of a senior NPWS officer.
- Construction of new containment lines should be avoided, where practicable, except where they can be constructed with minimal environmental impact.
- All personnel involved in containment line construction should be briefed on, and must consider both cultural and natural heritage sites in the location.
- All containment lines not required for other purposes should be closed immediately at the cessation of the incident.

Earthmoving Equipment

- Plant may only be used with the prior consent of a senior NPWS Officer.
- Plant must always be guided and supervised by an experienced officer and accompanied by a support vehicle (NPWS). When engaged in direct or partial attack, this vehicle must be a fire fighting vehicle.
- Plant must be washed down, where practicable, prior to entering NPWS estate and again on exiting NPWS estate.

Fire Suppression Chemicals

- The use of foam, wetting agents and retardants will NOT be permitted within 50 metres of dams and watercourse intakes.
- The aerial use of gels and retardants should be approved by a senior NPWS Officer.
- The use of retardants requires the approval of a senior NPWS officer.

Rehabilitation

- Where practicable, containment lines should be stabilised and rehabilitated as part of the wildfire suppression operation.

Water Points

- Water points are limited and not always reliable. Consider deployment of a bulk water carrier to support fire operations.

Smoke Management

- Potential smoke impacts and mitigation tactics will be assessed during the planning of fire operations.

Visitor Management

- In Extreme + Fire Danger at the Branch Directors discretion, reserves or sections of the reserve may be closed or evacuated.
- Ensure the closure is advertised on the NPWS visitor website.
- Advise applicants of the threats, and the restrictions in place for entry to the reserve.

WARNINGS

- The reserves within Nymboida National Park and SCA are free range and capable of sustaining healthy moving high intensity fires in rugged terrain with few access opportunities. There is a high risk of fire damage to the reserves. In this circumstance, the following fire planning needs to be undertaken to ensure the safety of the reserves.
- Communications Tower
- Fire Tower
- Fire Tower
- Fire Lookout
- On Ground Lookout
- Viewing Platform
- Quarry
- Gate non NPWS
- Gate non NPWS
- Camping Area
- Picnic Area
- Aplary Sites
- Powerlines - Essential Energy
- Other, Cat 1
- Other, Cat 9

Suppression Strategies

Conditions	Guidelines
All operations	Consider a broad containment strategy using existing roads, allowing long-term management arrangements for biodiversity.
Fire danger rating LOW - HIGH	Direct and parallel attack may be applied with earthmoving machinery and fire units.
Fire danger rating VERY HIGH	Close parallel or direct attack may be an option at night depending on weather conditions.
Fire danger rating SEVERE - EXTREME +	Close parallel or direct attack may be an option at night depending on weather conditions.

Heritage Guidelines

- IS 1 - As far as possible protect the site from fire. Do not cut down trees.
- IS 2 - As far as possible protect the site from fire. Avoid all ground disturbance and driving over sites. Avoid water bombing which may cause ground disturbance.
- IS 3 - Avoid all ground disturbance. Avoid water bombing. Site may be burnt by fire without damage.

Aboriginal Cultural Heritage

- As far as possible, protect the site from fire, and do not cut trees.
- Use of chainsaws and other equipment should be avoided.
- AIMS databases must be checked as part of planning for fire operations.
- Nymboida National Park and SCA are listed on the NSW State Heritage Register.
- A section of Kabe Mountain Trail has an open site which is marked by green points to indicate heavy glacial drift on the banks to minimise disturbance.

Historic Sites

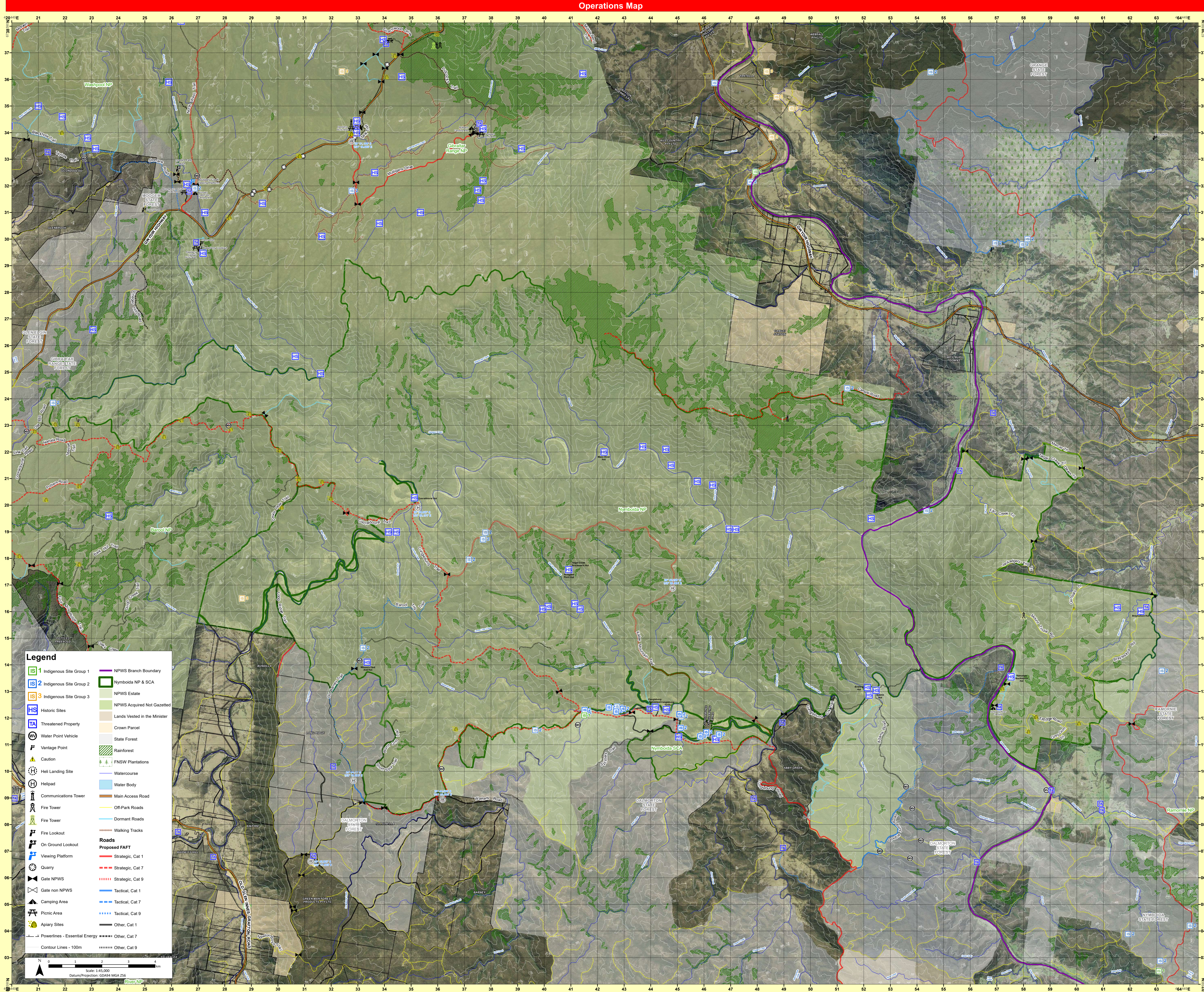
- Cunglebung homestead and yards. There is also a separate Cunglebung yards on the eastern side of the creek. Both assets are protected by an A22.

Threatened Fauna & Flora

- The protective actions for threatened flora and fauna have been incorporated into the Operational Guidelines.

Soil Erosion Management

- The soils within the reserve are generally stable. Sleep terraces is susceptible to erosion after disturbance. Fire tracks used in the operations should be drained as soon as possible after use.



Legend

IS 1 Indigenous Site Group 1	NPWS Branch Boundary
IS 2 Indigenous Site Group 2	Nymboida NP & SCA
IS 3 Indigenous Site Group 3	NPWS Estate
HS Historic Sites	NPWS Acquired Not Gazetted
TA Threatened Property	Lands Vested in the Minister
Water Point Vehicle	Crown Parcel
Vantage Point	State Forest
Caution	Rainforest
Helipad	Watercourse
Communications Tower	Water Body
Fire Tower	Off-Road Roads
Fire Tower	Dormant Roads
Fire Lookout	Walking Tracks
On Ground Lookout	
Viewing Platform	Roads
Quarry	Proposed FAFT
Gate non NPWS	Strategic, Cat 1
Gate non NPWS	Strategic, Cat 7
Camping Area	Strategic, Cat 9
Picnic Area	Tactical, Cat 1
Aplary Sites	Tactical, Cat 9
Powerlines - Essential Energy	Other, Cat 1
Other, Cat 9	Other, Cat 9

Scale: 1:45,000
Datum/Projection: GDA94 MGA Z56