

Washpool National Park & State Conservation Area



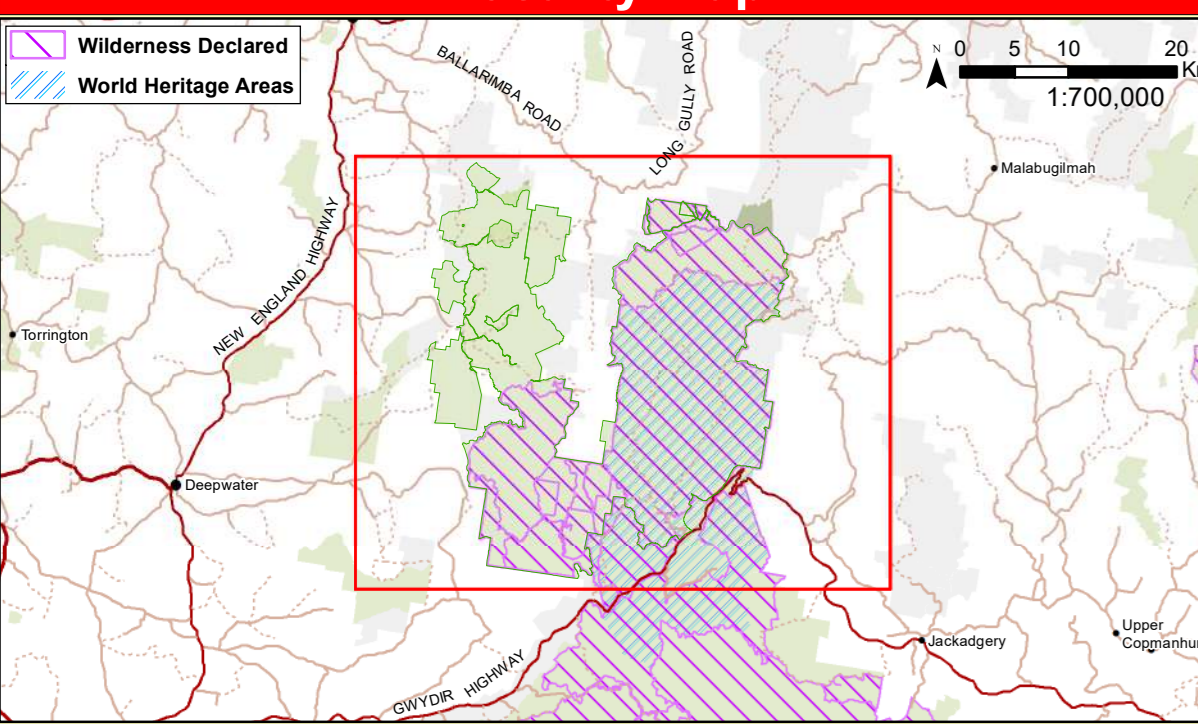
Fire Management Strategy (Type 2)
Sheet 1 of 2
2021 - 2026

This strategy should be used in conjunction with aerial photography and field reconnaissance. These data are not guaranteed to be free from error or omission. The NSW National Parks and Wildlife Service and its employees disclaim liability for any action on the information in this data and any consequences of such acts or omissions. This document is copyright. No part may be reproduced by any process without written permission. The NSW National Parks and Wildlife Service is part of the Department of Planning, Industry and Environment. Published by the Office of Environment and Heritage (NSW). Contact: NSW National Parks and Wildlife Service, Northern Inland Branch.

ISBN: 978-1-922558-88-6 DPIE Number: EES2021/0216 Last Updated: 02/07/2021

This strategy is a relevant Plan under Section 38 (4) and Section 44 (3) of the Rural Fires Act 1997.

Locality Map



Map details
Datum: GDA 1994 MGA Zone 56 Geographic Coordinate System: GCS_GDA_1994 Tiled scales: True when printed on A3 size paper
Local Government Area: Glen Innes Shire Council
Topographic Map: 1:25000 - Sandy Flat 6328 43, Adams Creek 6330 15, Sprague 6332 24, Washpool 6330 24, Rockabaab 6332 35, Coonambidge 6330 25, Glen Innes 6328 43

Contact Information		
Agency	Position / Location	Phone
National Parks & Wildlife Service	Area Manager - Darren Pitt	0427 212 255
	Duty Officer (24 hours)	0278 7162
NSW Rural Fire Service	Northern Tablelands Area Office (bus. hours)	6739 0700
	NT Zone Manager - Chris Watbridge	0428 687 647
Northern Tablelands	NT Duty Officer	6739 6811
	NT Zone Office	6739 6860
Clarence Valley Zone	Ternterfield Office	6736 4150
	CV Zone Manager - Stuart Watts	0409 460 325
Forest Corporation of NSW	CV Duty Officer	6844 5139
	CV Zone Office	6844 5135
Fire & Rescue NSW	Local Helicopter	6650 0111
	Griffin	6640 2222
Emergency Services	State Duty Officer	2965 4374
	Newcastle Comm. Centre	4929 7177
SES	Police, Fire, Ambulance	132 000
Police	Glen Innes	6732 9799
	Ternterfield	6842 9222
Council	Glen Innes Seven	6736 1144
	Clarence Valley	6734 2800
Local Aboriginal Land Council	Glen Innes LALC	6843 0200
	Strategic LALC	6739 6800
Bicentennial National Trail	Glen Innes LALC	6732 1150
	Post Office Box Gundagai NSW 2722	6647 2313

Communications

Service	Channel	Location and Comments
NPWS Repeaters	334 634	Summit Mountain North View Group Fire ground
FC NSW	198 (NPWS) 199 (NPWS)	Fire Network (Digital and Private) Campus for Eastern Fall
RFS	9022 9021	NPWS Radio Network (Digital) Clarence Valley Digital Voice
UHF - CB		Northern Tablelands Digital Voice Small fire channel US, large fire determined by MIT
Aviation - CTAF	134.70	NB frequency unless another frequency is allocated on an incident
Mobile		Telstra coverage is generally unavailable for most of the reserve
Satellite Phone	0147 168 975 0147 154 198	Stored at Glen Innes

Fire Season Information

Wildfires
The critical wildfire season occurs during September to November. This period may extend into January if the normally reliable summer rainfall does not eventuate. Particular care is required during periods of negative Southern Oscillation Index. The end of the critical fire season is often marked by wet storm activity.
Prescribed Burning
Fuel accumulation rates are generally high, and fire can carry through forest burn only several years previously. Prescribed burning is most effective in late winter and early spring where the combination of low rainfall and cool winds from the north maximize available fuel loads. Autumn burns are possible if rainfall events in this period can mean fuel moisture contents remain too high for effective hazard reduction burns.

Operational Guidelines

Operational Guidelines	Guidelines
Aerial Operations	<ul style="list-style-type: none">Aerial operations will be managed by trained and competent personnel. This includes directing aerial bombing and aerial ignition operations.The use of bombing aircraft without the support of ground-based suppression crews should be limited to very specific circumstances.All aerial ignition operations require the consent of a senior NPWS officer or the Section 44 Appointee.
Backburning	<ul style="list-style-type: none">All personnel must be fully briefed before back-burning operations begin.Backburning in areas of Low - Moderate OFH will require the use of wind, or low humidity to maximise effectiveness.Where possible clear around dead and fibrous barked trees adjacent to control lines prior to backburning.
Command & Control	<ul style="list-style-type: none">The first combatant agency on site may assume control of the fire, but then must ensure the relevant land management agency is notified promptly.The initial Incident Controller will liaise with the RFS to ensure that the agency in command is determined and an Incident Controller is appointed.
Containment Lines	<ul style="list-style-type: none">New containment lines require the prior consent of a senior NPWS officer.Construction of new containment lines should be avoided, where practicable, except where they can be constructed with minimal environmental impact.All personnel involved in containment line construction should be briefed on, and must consider both natural and cultural heritage sites in the location.All containment lines not required for other purposes should be closed immediately at the cessation of the incident.
Earthmoving Equipment	<ul style="list-style-type: none">Plant may only be used with the prior consent of a senior NPWS officer.Plant must always be guided and supervised by an experienced officer and accompanied by a support vehicle (NPWS). When engaged in direct or parallel attack, this vehicle must be a fire fighting vehicle.Plant must be washed down, where practicable, prior to entering NPWS estate and again on exiting NPWS estate.
Fire Suppression Chemicals	<ul style="list-style-type: none">The use of foam, wetting agents and retardants will NOT be permitted within 50 metres of dams and watercourses holding water.The aerial use of gels and retardants should be approved by a senior NPWS officer.The use of retardants requires the approval of a senior NPWS officer.
Rehabilitation	<ul style="list-style-type: none">Where practicable, containment lines should be stabilised and rehabilitated as part of the wildfire suppression operation.
Water Points	<ul style="list-style-type: none">Water points are limited and not always reliable. Consider deployment of a bulk water carrier to support fire operations.
Smoke Management	<ul style="list-style-type: none">Potential smoke impacts and mitigation tactics will be assessed during the planning of fire operations.
Visitor Management	<ul style="list-style-type: none">Visitors numbers in the reserve can be high with a combination of day use, overnight and walking track facilities available to the public. Some visitors in the reserve may be on remote walking tracks and reserve closures need to be carefully considered to ensure all visitors in the park are aware of fire danger warnings.Implement the emergency management plan during Severe + Fire Danger, or when fires are threatening walking trails and public use facilities. Ensure the closure is advertised on the NPWS visitor website.
WARNINGS	<ul style="list-style-type: none">The forests within Washpool National Park and SCA are capable of sustaining rapidly moving high intensity fires in support levels in dry conditions. There is a high risk of entrapment in these areas under severe or above fire danger ratings.Clarence Valley National Park, Wyalapa NP & SCA, Sand NP and Washpool NP & SCA are geographically interrelated if landscape scale fire eventuates. In this circumstance fire planning needs to carefully consider adjacent threats and fire subdivisions in these reserves.Fire runs should be anticipated with winds from any direction.

Suppression Strategies

Conditions	Guidelines
All vegetation types	<ul style="list-style-type: none">Consider a broad containment strategy using existing roads, allowing long-term management requirements for biodiversity.Direct and parallel attack may be applied with earthmoving machinery and fire units.Close parallel or direct attack may be an option at night depending on weather conditions.Distance between the tank and machinery and fire units should be kept to a minimum.Secure and deepen containment lines on the lead predicted downwind side of the fire.May require aerial support to manage spot fires and monitor fire spread.
Fire danger rating LOW - HIGH	<ul style="list-style-type: none">Engage in the permanent containment strategy.
Fire danger rating VEGY HIGH	<ul style="list-style-type: none">Undertake broad containment strategies using main fire trails and cleared country.Tactics will include pre-emptive protection where safe and necessary.Close parallel or direct attack and / or mop up of fire edge may be an option at night depending on conditions.Warning: Fire runs should be anticipated with winds from any direction. Entrapment risk is very high.
Fire danger rating SEVERE - EXTREME +	<ul style="list-style-type: none">Warning: Fire runs should be anticipated with winds from any direction. Entrapment risk is very high.

Heritage Guidelines

IS 1 - As far as possible protect site from fire. Do not cut down trees.
IS 2 - As far as possible protect the site from fire. Avoid all ground disturbance and driving over sites. Avoid water bombing which may cause ground disturbance.
IS 3 - Avoid all ground disturbance. Avoid water bombing. Site may be burnt by fire without damage.
Modified trees

- As far as possible, protect the site from fire, and do not cut trees.
- Use of foams & retardant is acceptable.

Habitat sites

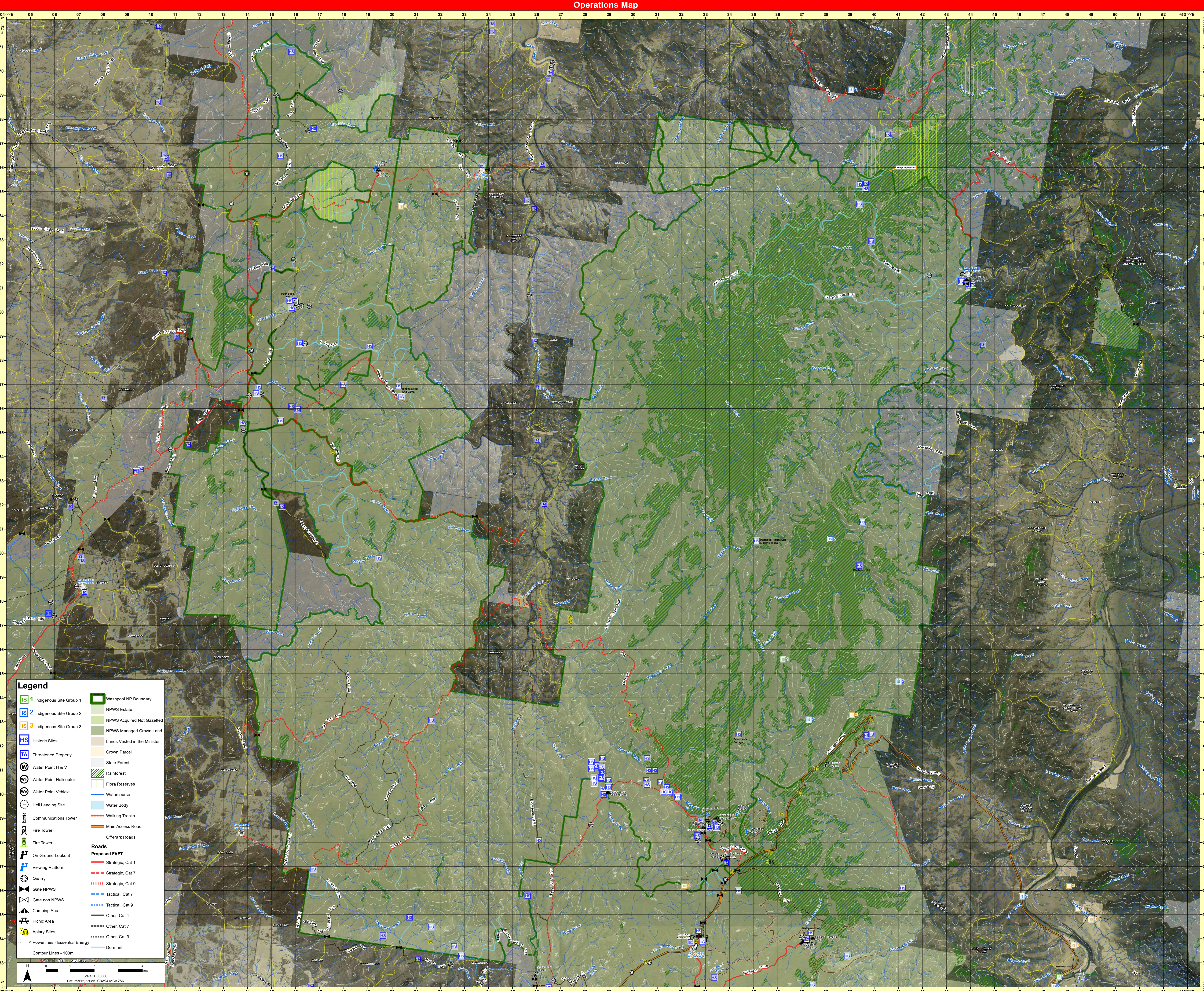
- Exclude control the construction from sites. Consider a buffer zone of about 50 metres from the sites.
- AIMS databases must be checked as part of planning for fire operations.
- Washpool NP and SCA significant Aboriginal sites include:
 - Known sites are easy from trails and unlikely to be affected by fire management activity.
 - Washpool NP and SCA significant historic sites include:
 - Tree Carving (non-Aboriginal) on Bicentennial Trail 4288/3 738781

Threatened Fauna & Flora

- The protective actions for threatened flora and fauna have been incorporated into the Operational Guidelines.
- Green posts on Mogen fire trail @ 432838 674003 - no mechanical work outside the existing road reserve.

Soil Erosion Management

The soils within the reserve are generally stable. Slope terrain is susceptible to erosion after disturbance. Fire trails used in the operations should be drained as soon as possible after use.



Legend

IS 1 Indigenous Site Group 1	Washpool NP Boundary
IS 2 Indigenous Site Group 2	NPWS Estate
IS 3 Indigenous Site Group 3	NPWS Acquired Not Gazetted
Historic Sites	NPWS Managed Crown Land
Threatened Property	Lands Vested in the Minister
Water Point H & V	Crown Parcel
Water Point Helicopter	State Forest
Water Point Vehicle	Rainforest
Hel Landing Site	Flora Reserves
Communications Tower	Watercourse
Fire Tower	Water Body
On Ground Lookout	Walking Tracks
Viewing Platform	Main Access Road
Quarry	Off-Park Roads
Gate NPWS	Proposed FAFT
Camping Area	Strategic, Cat 1
Picnic Area	Strategic, Cat 7
Aplary Sites	Strategic, Cat 9
Powerlines - Essential Energy	Tactical, Cat 7
Contour Lines - 100m	Tactical, Cat 9
	Other, Cat 1
	Other, Cat 7
	Other, Cat 9
	Dormant

Scale: 1:50,000
Datum: Projection: GDA94 MGA 256