

Supporting document E: Dorrigo Escarpment Great Walk project mapping

List of figures

Figure 1: Acid sulphate soils classification.....	2
Figure 2: Naturally occurring asbestos	3
Figure 3: NSW Aboriginal heritage information management system (AHIMS) sites	4
Figure 4: Crown land.....	5
Figure 5: Bush fire prone land	6
Figure 6: Acid sulphate soils risk.....	7
Figure 7: Plant community types – Day 1	8
Figure 8: Plant community types – Day 2	9
Figure 9: Plant community types – Day 3	10
Figure 10: Plant community types – Day 4	11
Figure 11: Land zoning.....	12
Figure 12: Resilience and hazard SEPP	13
Figure 13: Threatened bird species	14
Figure 14: Threatened insect, reptile and amphibian species.....	15
Figure 15: Threatened mammal species.....	16
Figure 16: Threatened flora species	17

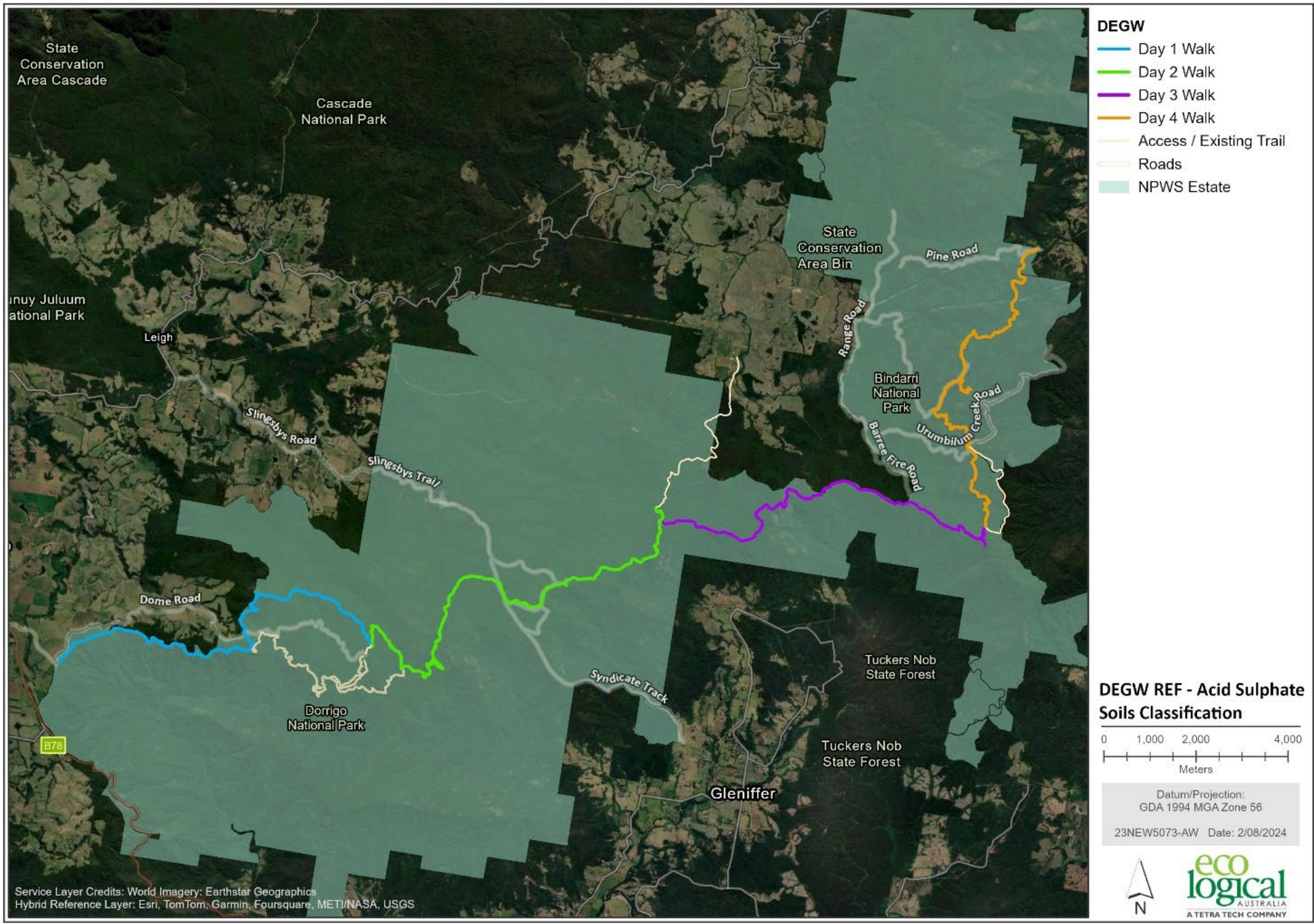


Figure 1: Acid sulphate soils classification

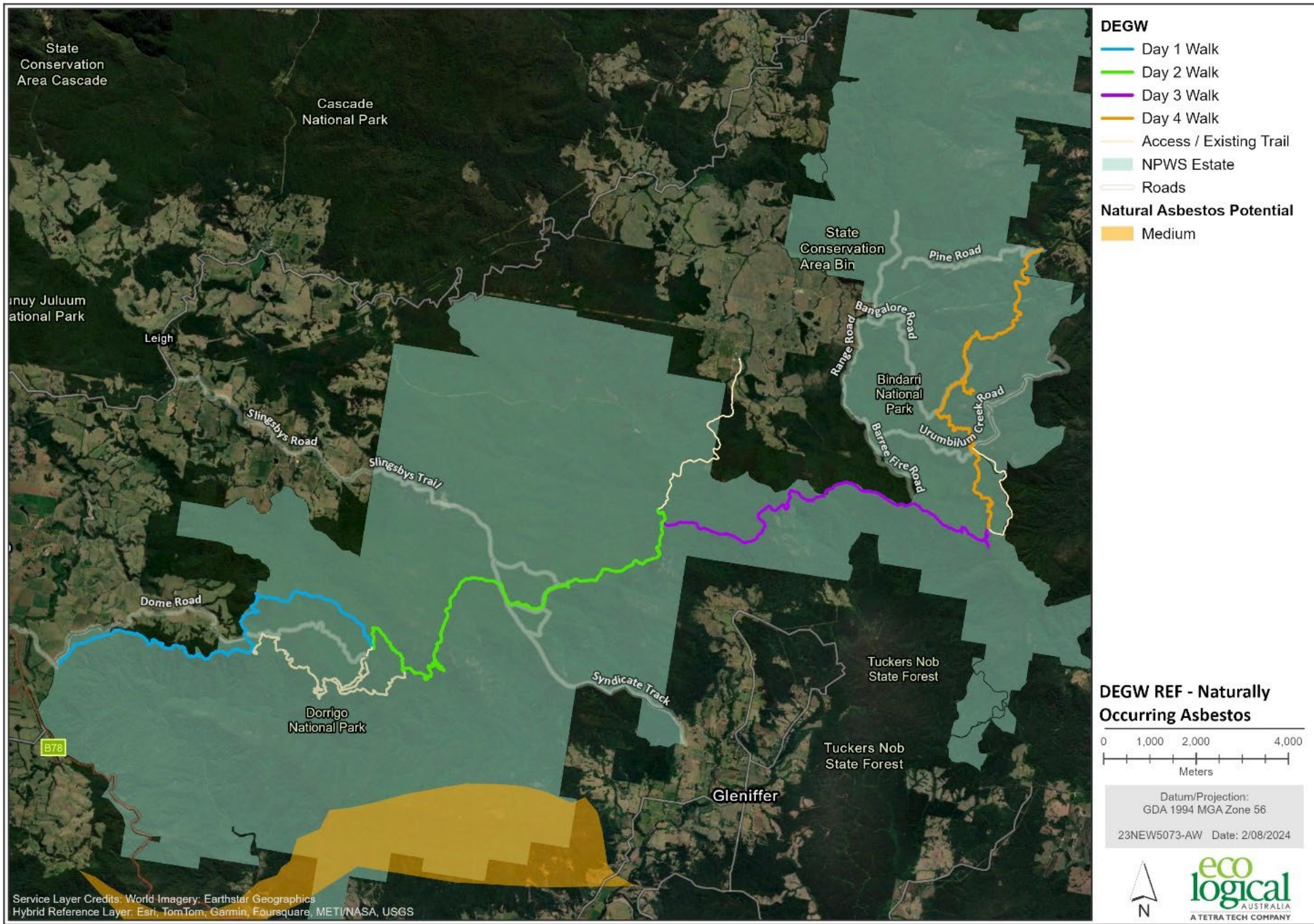


Figure 2: Naturally occurring asbestos

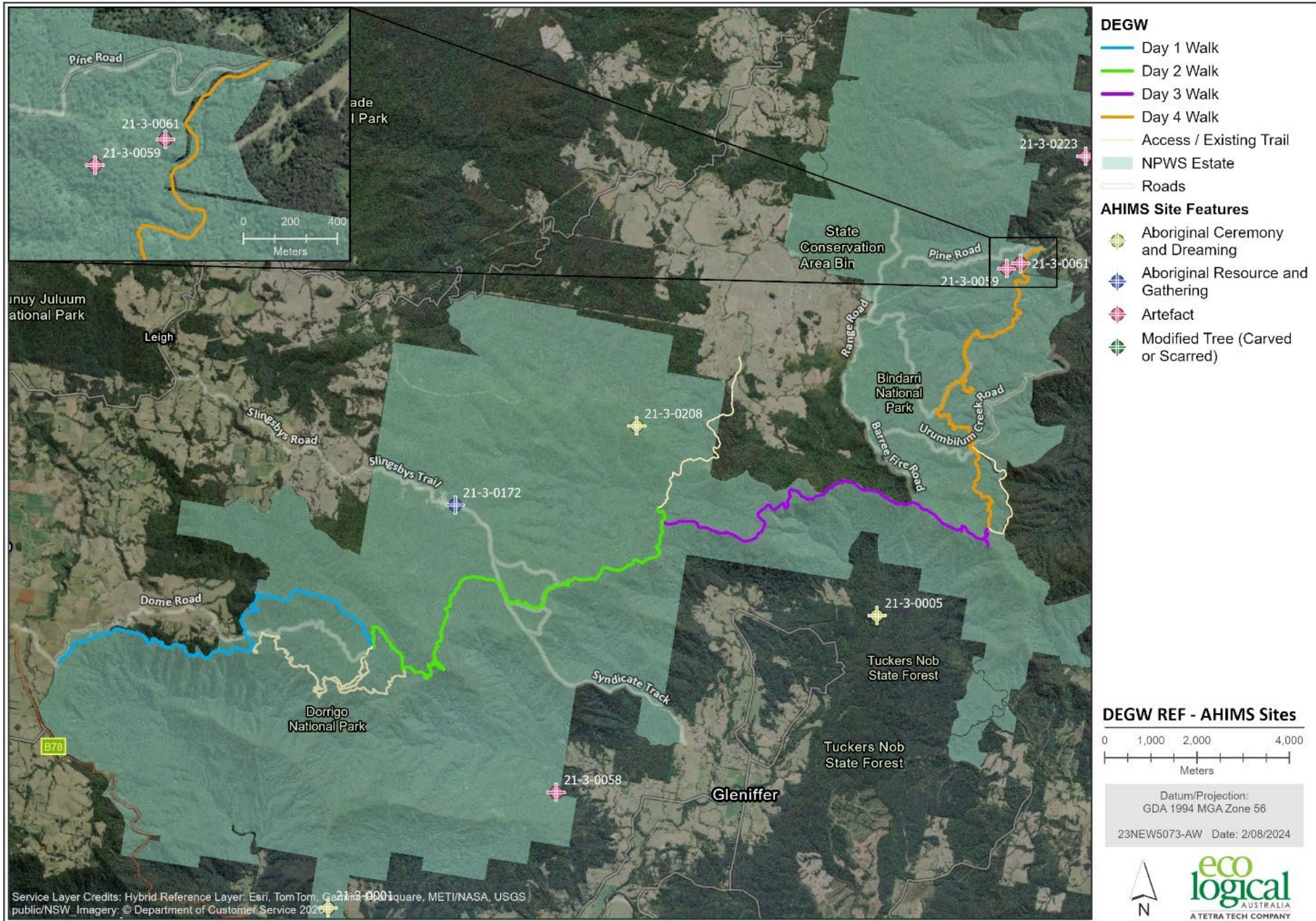


Figure 3: NSW Aboriginal heritage information management system (AHIMS) sites

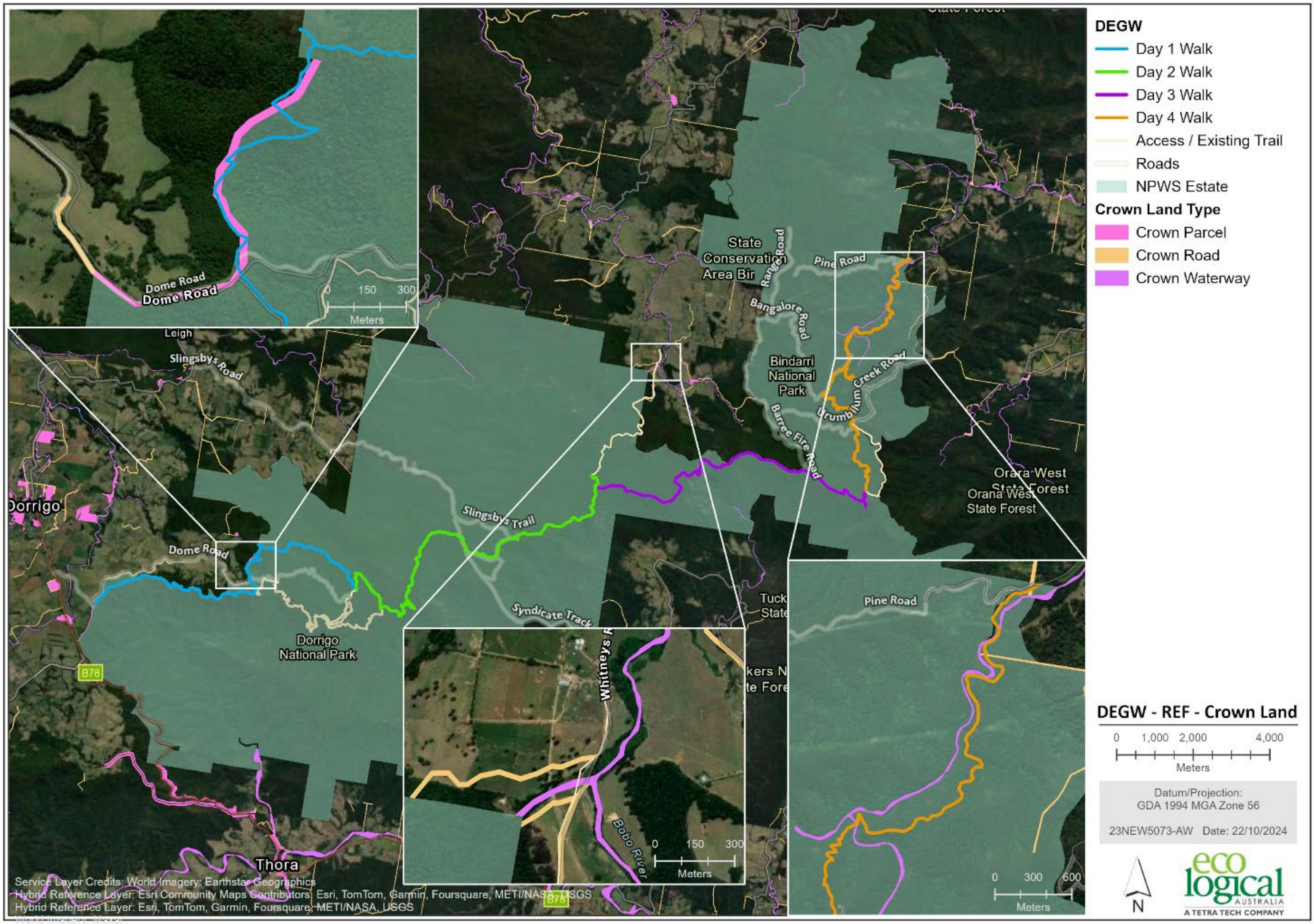


Figure 4: Crown land

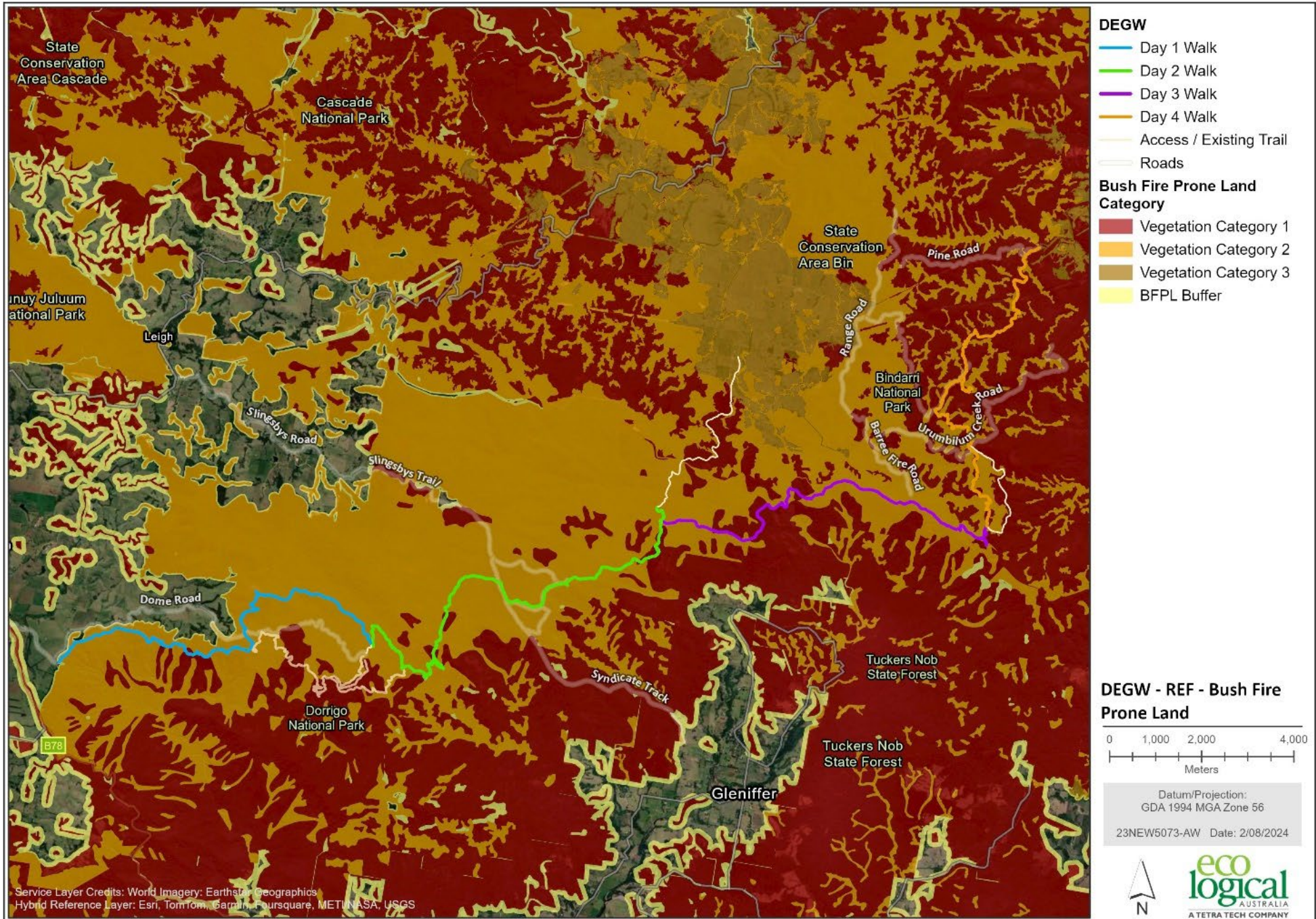


Figure 5: Bush fire prone land

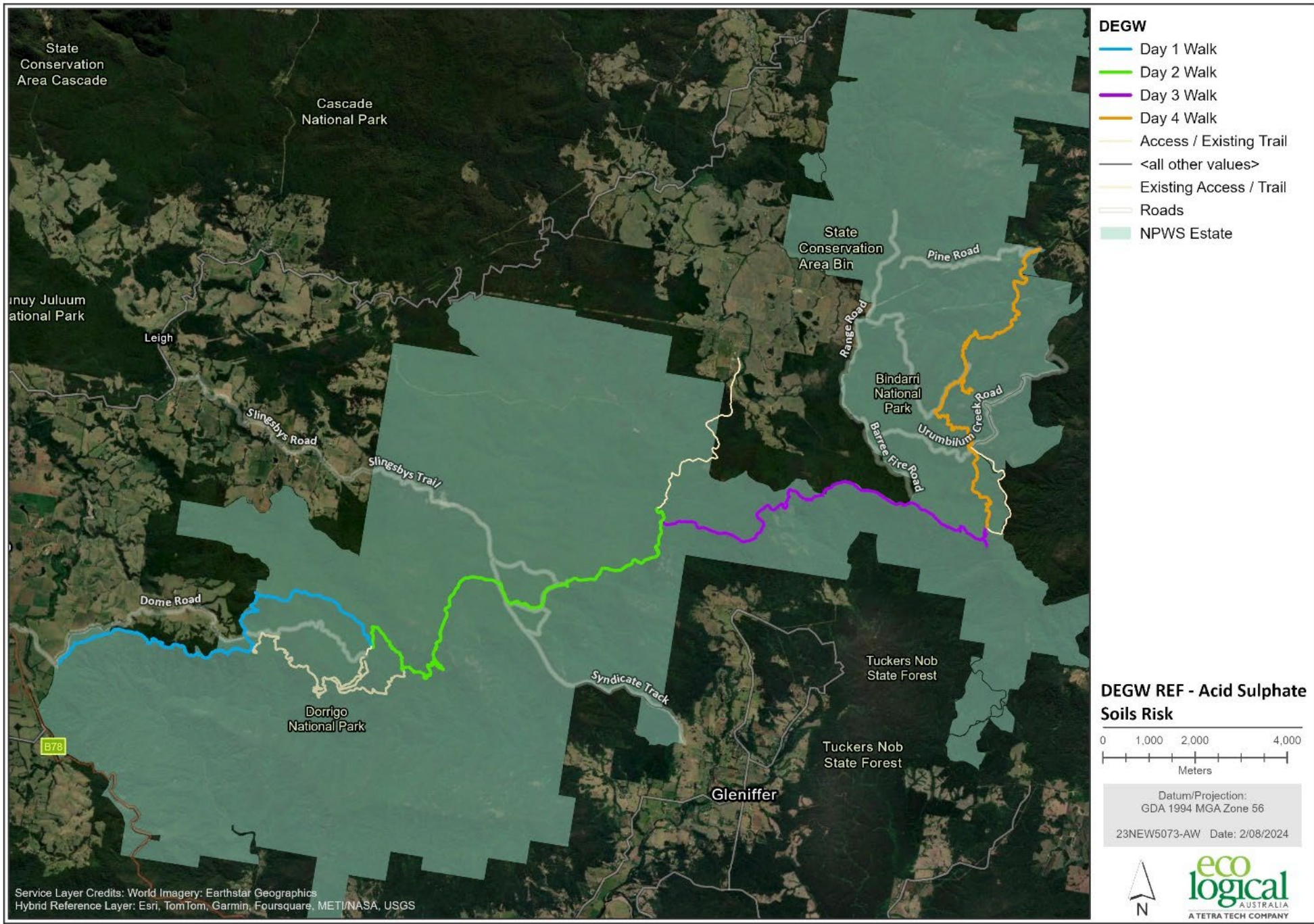


Figure 6: Acid sulphate soils risk

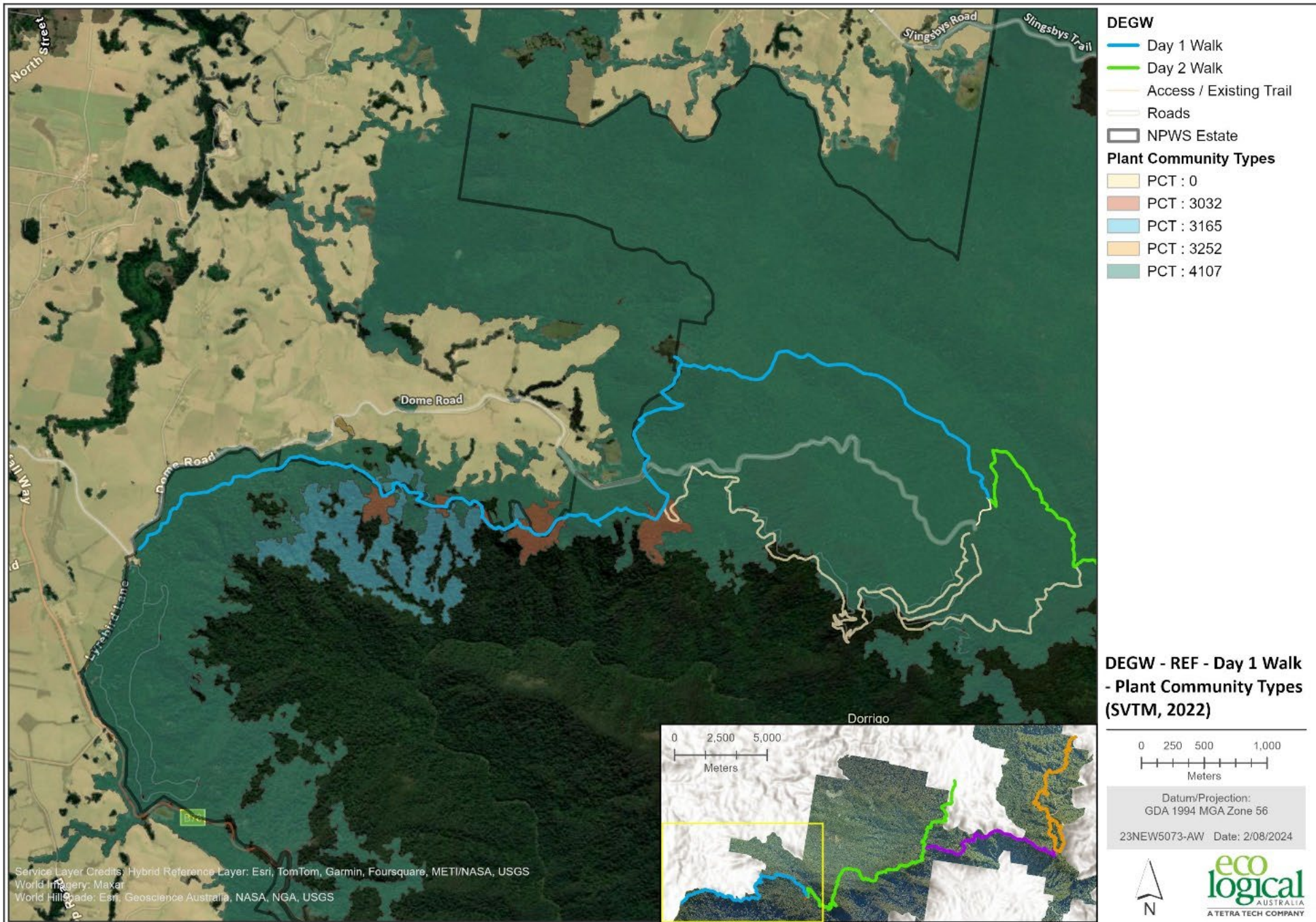


Figure 7: Plant community types – Day 1

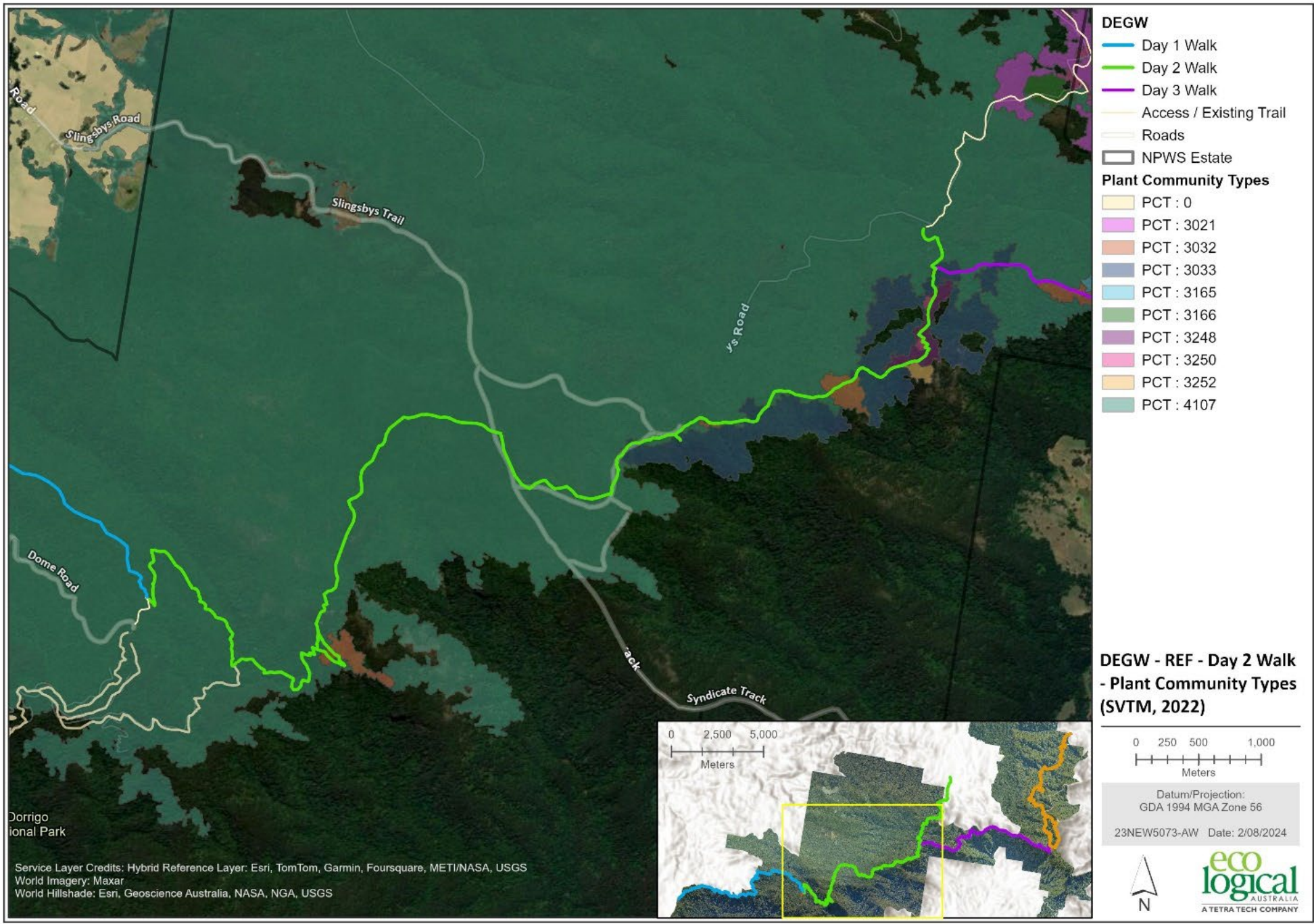


Figure 8: Plant community types – Day 2

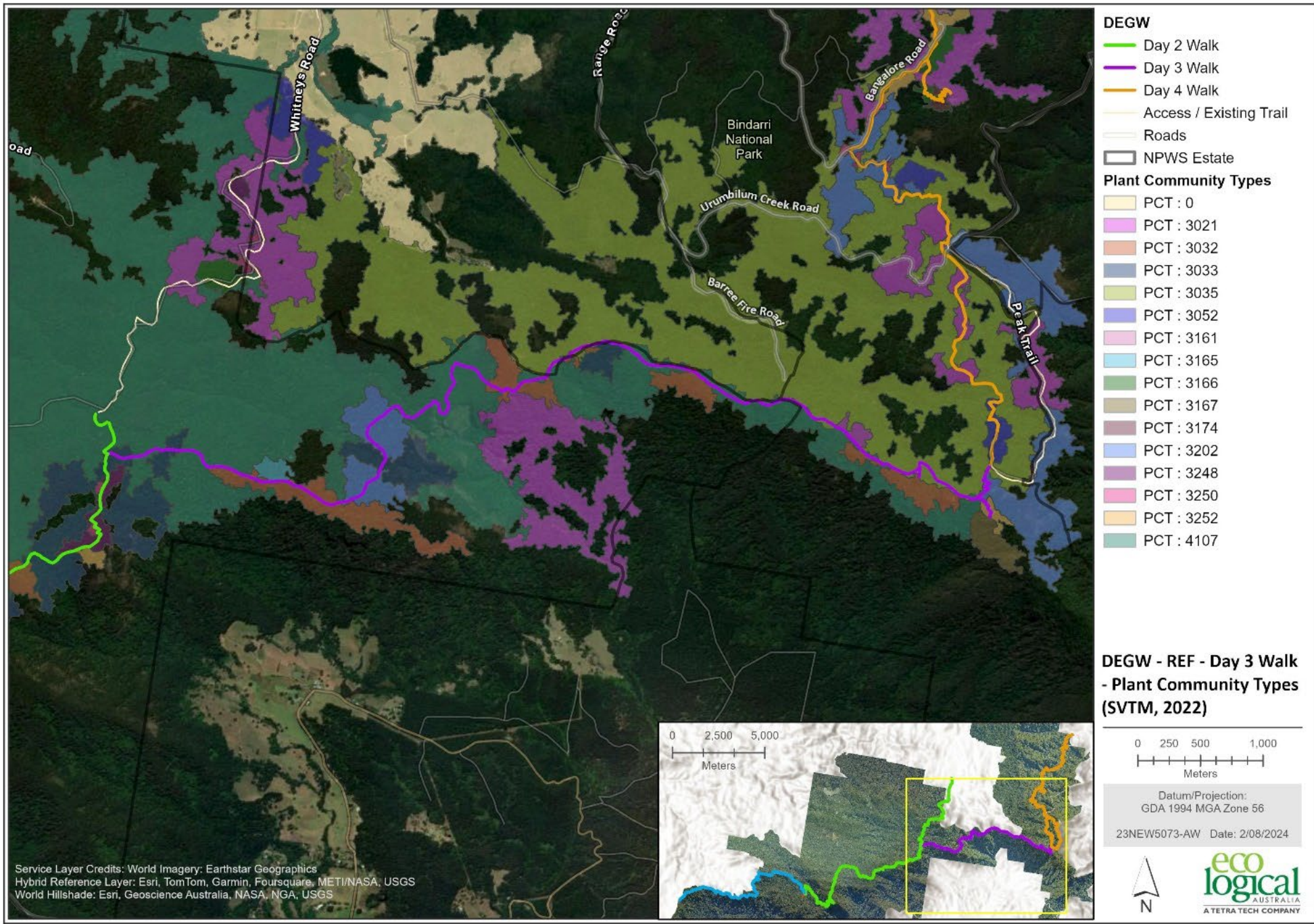


Figure 9: Plant community types – Day 3

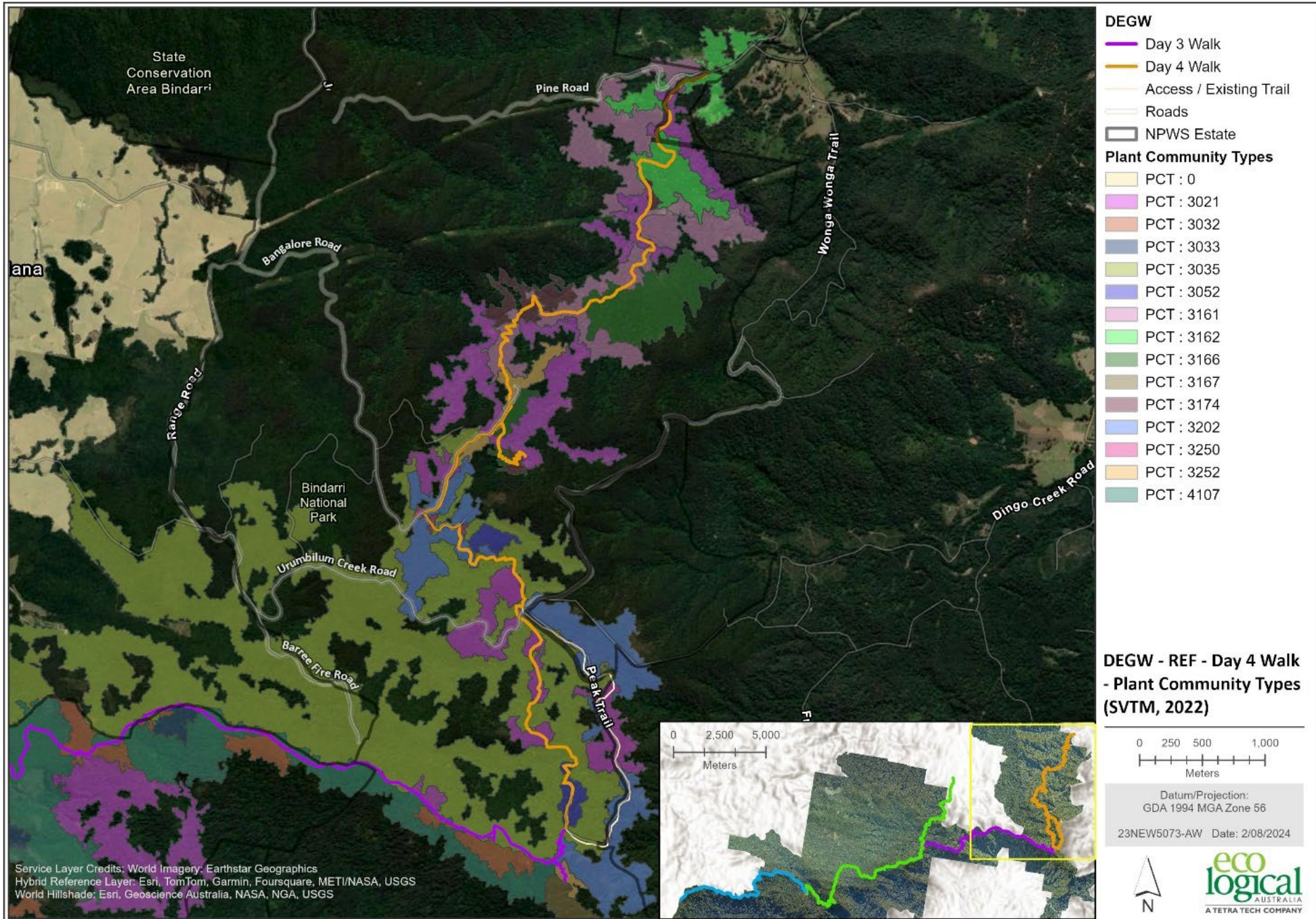


Figure 10: Plant community types – Day 4

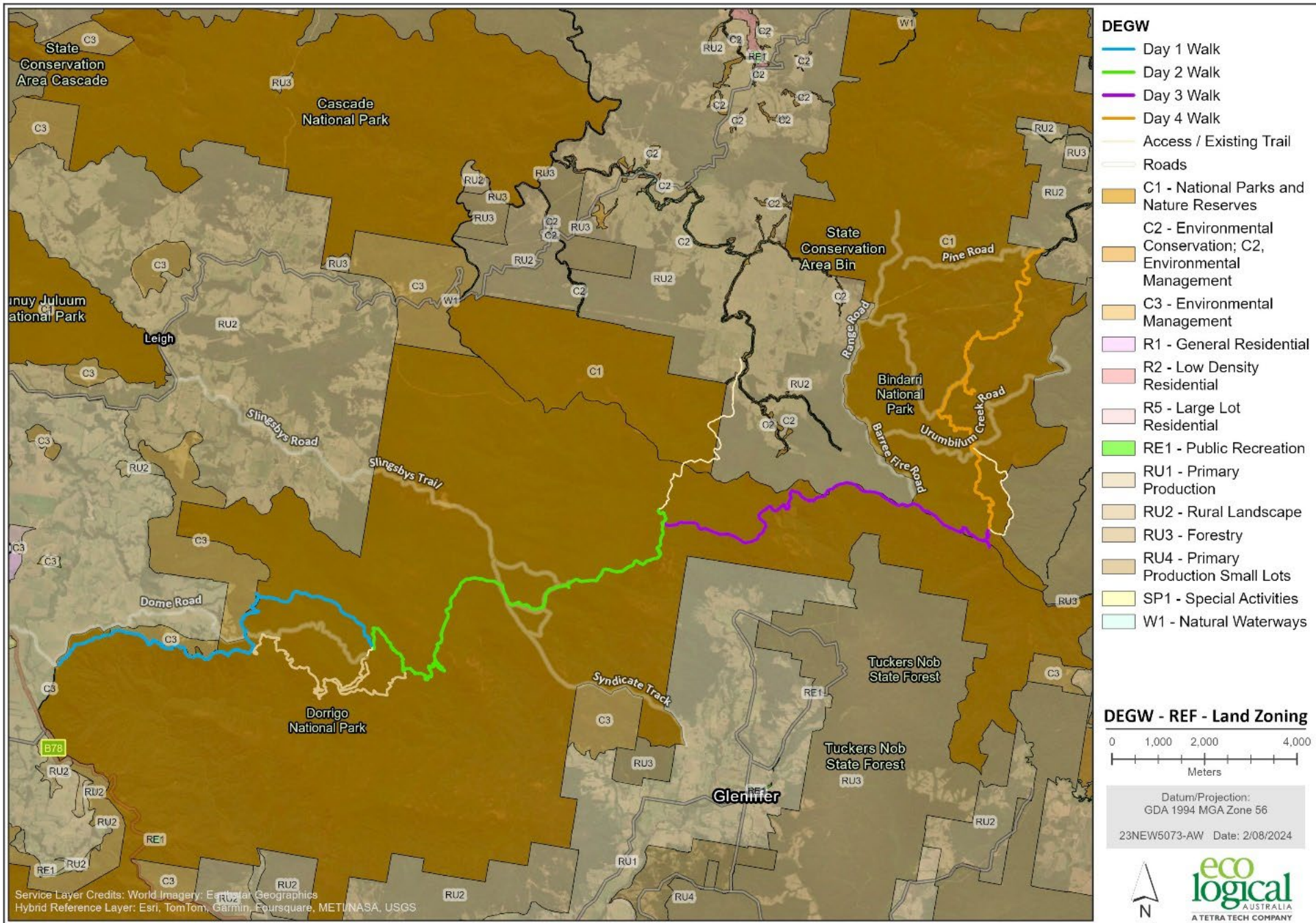


Figure 11: Land zoning

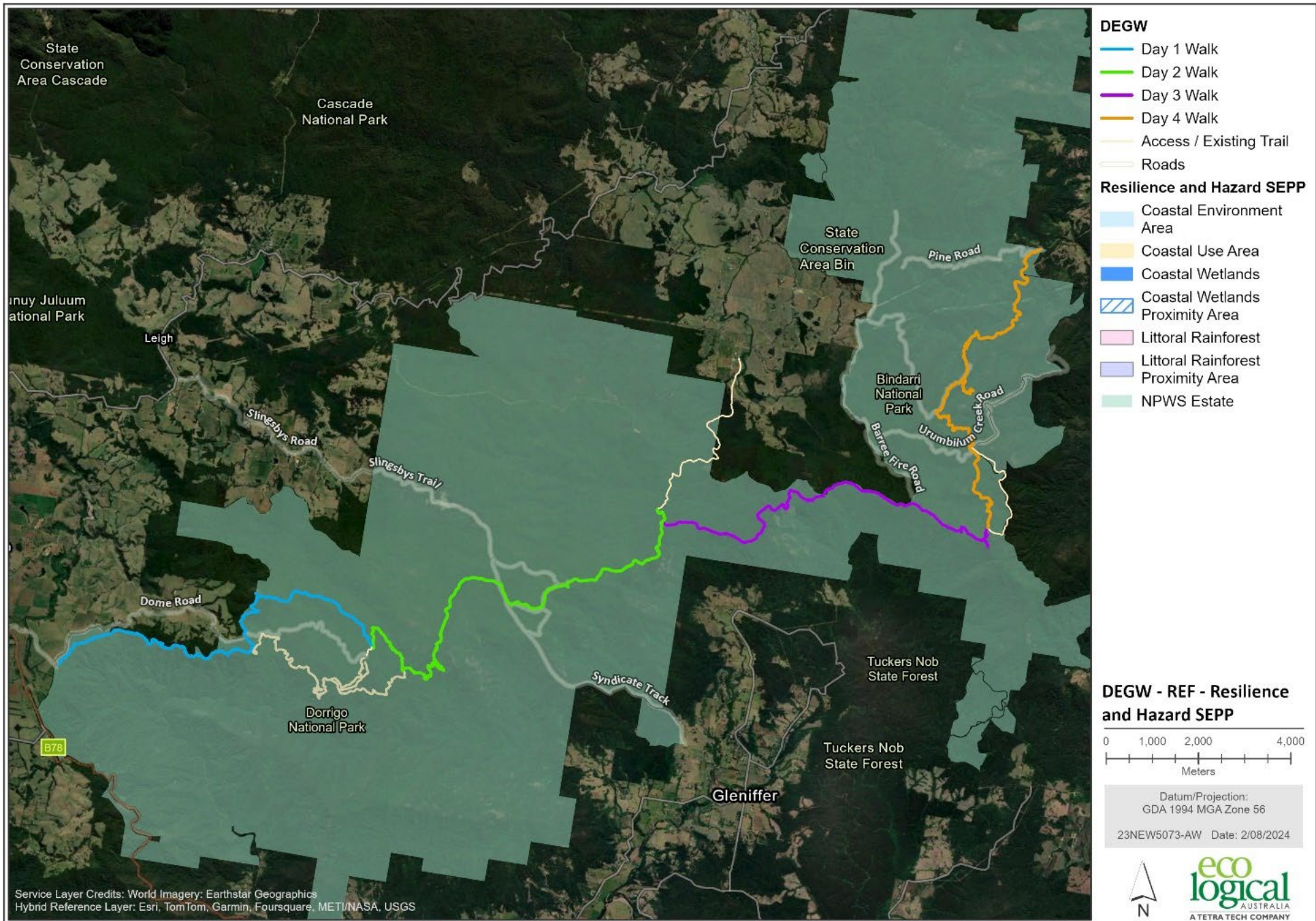


Figure 12: Resilience and hazard SEPP

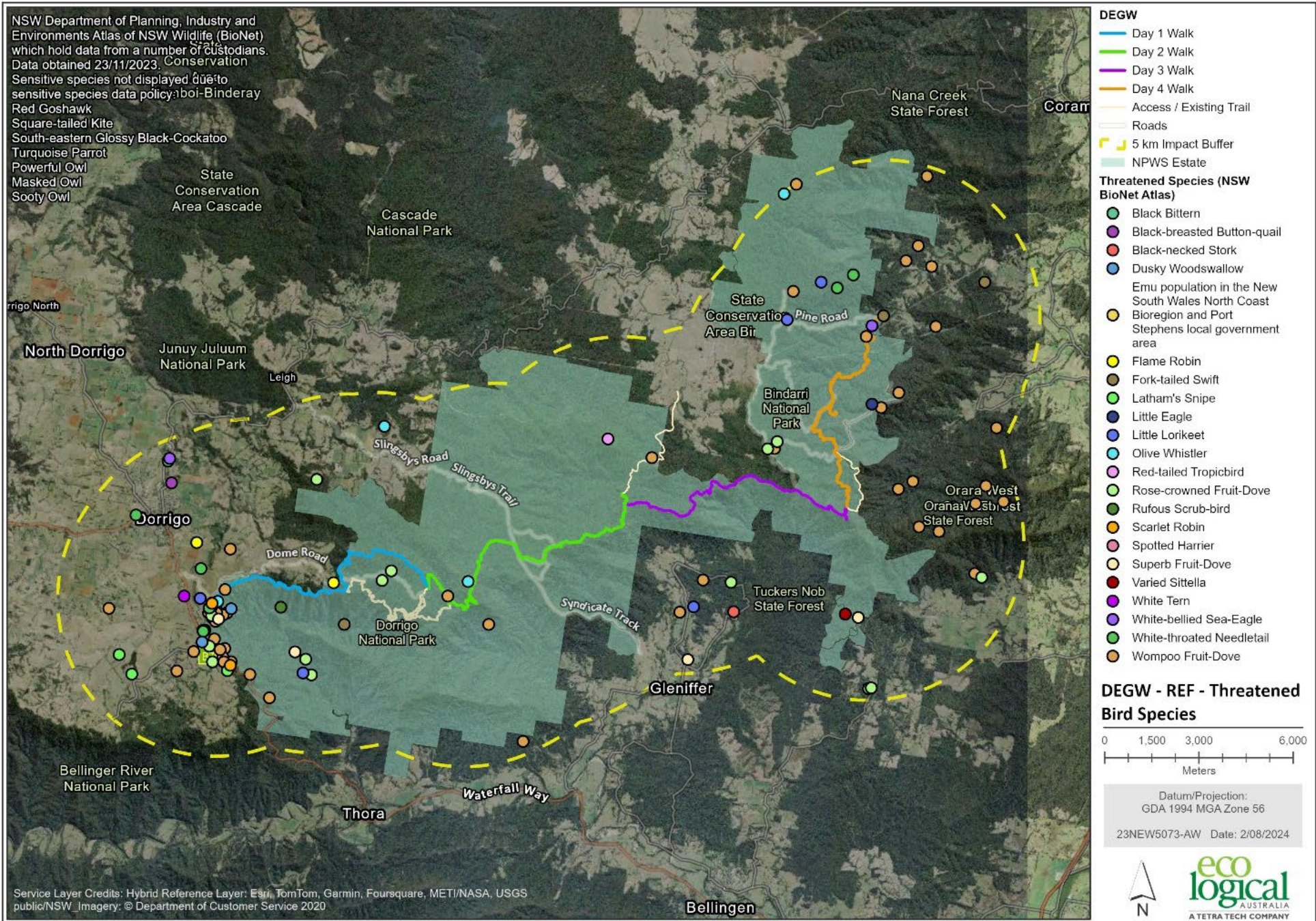


Figure 13: Threatened bird species

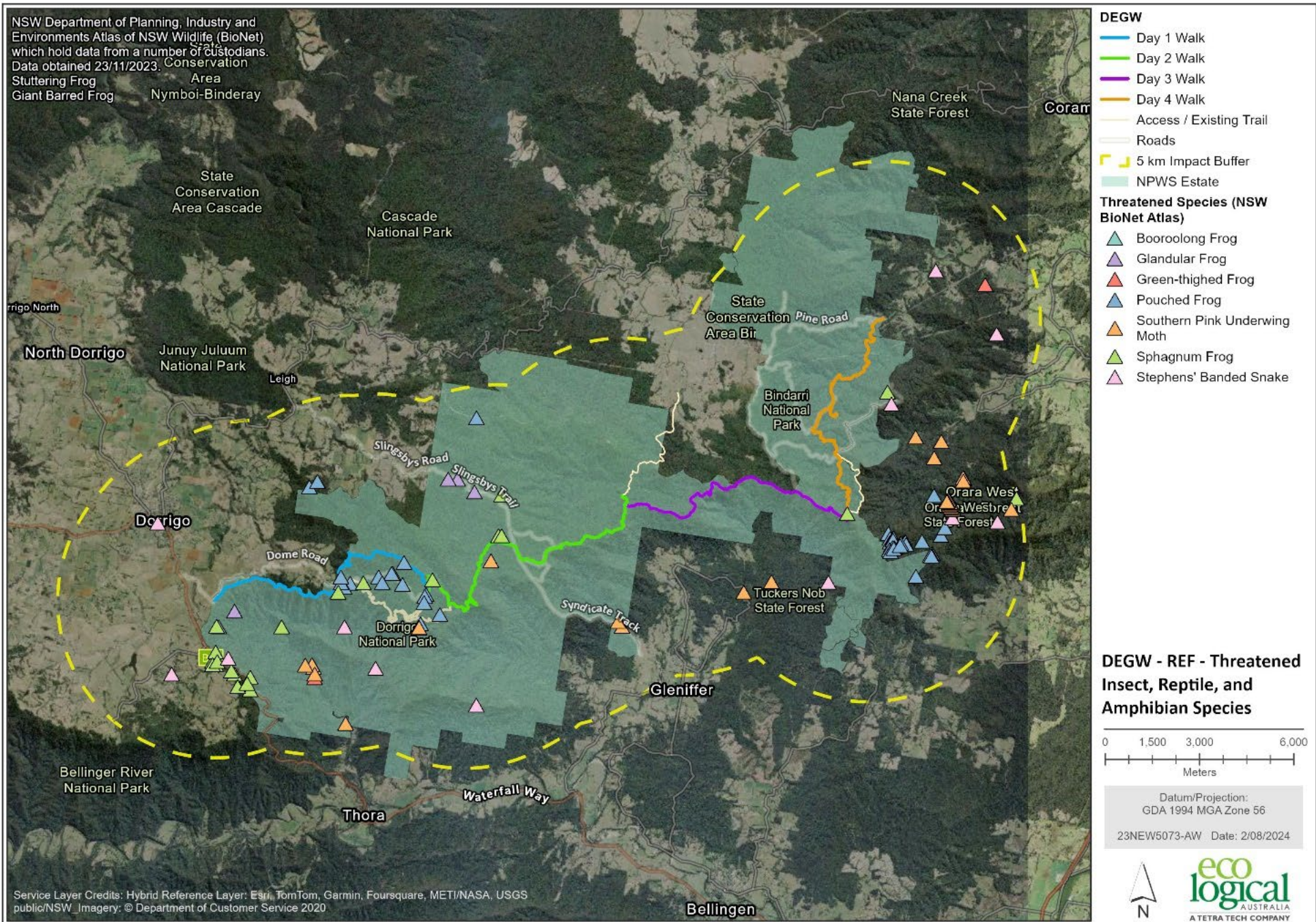


Figure 14: Threatened insect, reptile and amphibian species

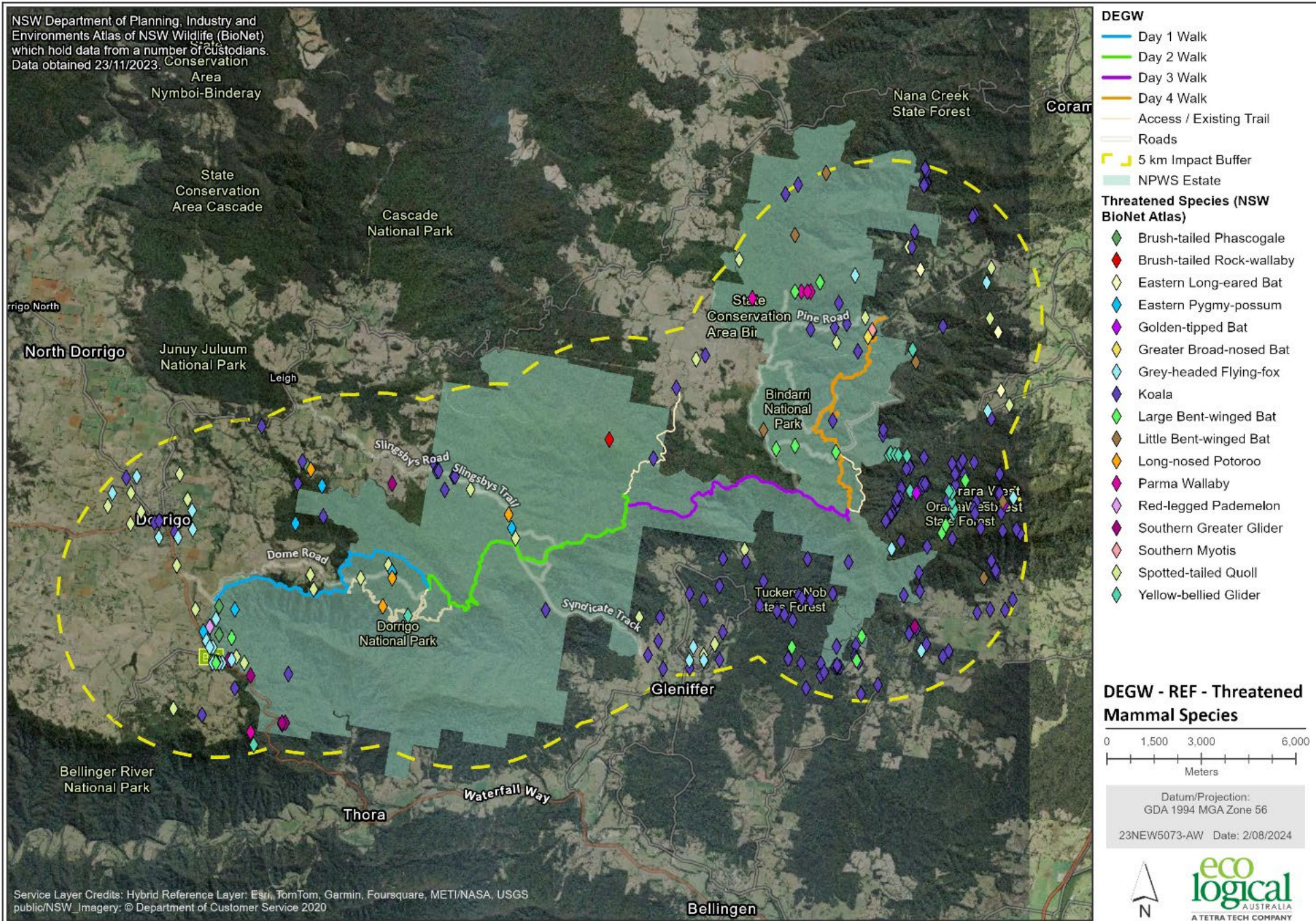


Figure 15: Threatened mammal species

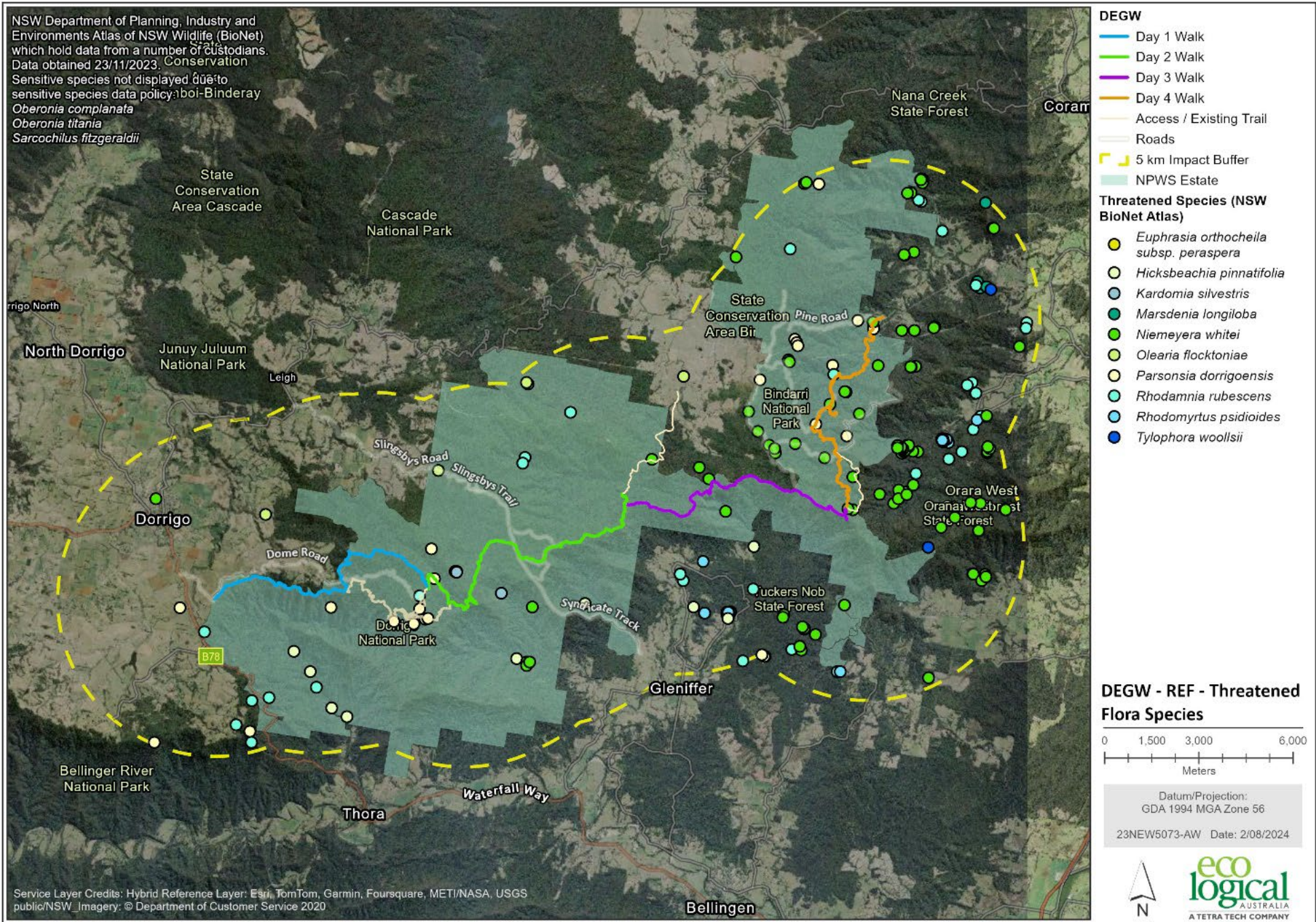


Figure 16: Threatened flora species