

LEGEND

- Existing contours (0.2 m interval)
- Proposed contours (0.2 m interval)
- Proposed Pavement
- Proposed roofed structure
- Proposed footpath
- Proposed road centreline
- Proposed limit of works
- Indicative bollard locations
- Proposed pipe culvert
- Proposed drainage swale
- Tree requiring protection
- Tree requiring removal
- Trees to be retained using methodology on GeoLINK 3706/C030

FOR CONSTRUCTION

Rev.	Description	Date	Des.	App.	Chk.
2	Added tree details	12/05/2021	BWH	RE	RE
1	Issue for Construction	10/02/2021	BWH	RE	RE

Amendments

© GeoLINK

This drawing must not be relied upon for any purpose other than that for which it was prepared or by any person or corporation other than the referred client.

Lennox Head Office
PO Box 119
Lennox Head NSW 2478
Tel: 02 6587 7666

Coffs Harbour Office
PO Box 1446
Coffs Harbour NSW 2450
Tel: 02 6651 7666

Armidale Office
PO Box 1267
Armidale NSW 2350
Tel: 02 6772 0454

Lismore Office
PO Box 229
Lismore NSW 2480
Tel: 02 6621 6677

www.geolink.net.au Email: info@geolink.net.au

environmental management and design

GeoLINK

quality solutions sustainable future

Project Title

NPWS Unicorn Falls

Client

NPWS

Designed	BWH	Drawn	BWH	Checked
Approved	RE	Date	5/11/2020	MVE

XREFs

Scale

metres 0 1 2 3 4 5

- NOTES:**
1. Proposed layout provides 18 car parking spaces at 3 m x 6 m, including one space for people with disabilities.
 2. One parking bay for a Medium Rigid Vehicle (MRV) is provided, with a three-point turn manoeuvre required for exiting.
 3. Circulation aisles are 6 m wide minimum.
 4. Bollards may be substituted with boulders or large logs on site dependent on availability. Additional bollards or other barriers may be required to prevent vehicles parking in undesirable locations.
 5. Pavement surfacing to be 150 mm deep wearing course material with minimum CBR of 40 and maximum particle size of 40 mm.

Drawing Title

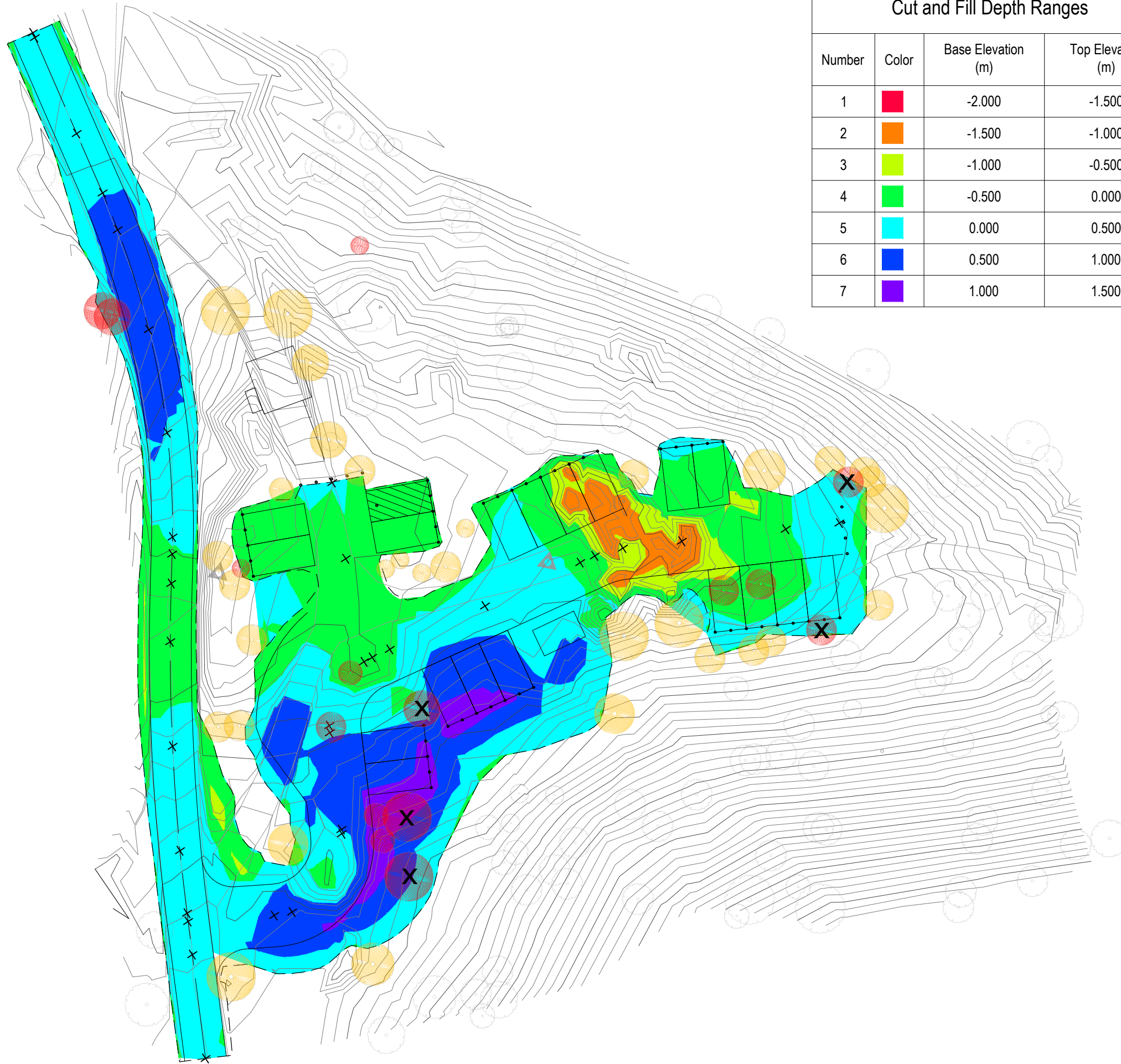
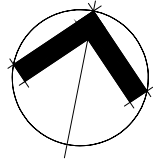
Car Park Civil Works Layout

Drawing Number

3706/C011

Revision

2



Cut and Fill Depth Ranges			
Number	Color	Base Elevation (m)	Top Elevation (m)
1	Red	-2.000	-1.500
2	Orange	-1.500	-1.000
3	Yellow	-1.000	-0.500
4	Green	-0.500	0.000
5	Cyan	0.000	0.500
6	Blue	0.500	1.000
7	Purple	1.000	1.500

- LEGEND**
- Existing contours (0.2 m interval)
 - Proposed contours (0.2 m interval)
 - Proposed limit of works
 - Tree requiring protection
 - Tree requiring removal
 - Trees to be retained using methodology on GeoLINK 3706/C030

FOR
CONSTRUCTION

Rev.	Description	Date	Des.	App.	Chk.
2	Added tree details	12/05/2021	BWH	RE	RE
1	Issue for Construction	10/02/2021	BWH	RE	RE

Amendments

© GeoLINK

This drawing must not be relied upon for any purpose other than that for which it was prepared or by any person or corporation other than the referred client.

GeoLINK
environmental management and design

Lennox Head Office
PO Box 119
Lennox Head NSW 2478
Tel: 02 6687 7666

Coffs Harbour Office
PO Box 1446
Coffs Harbour NSW 2450
Tel: 02 6651 7666

Armidale Office
PO Box 1267
Armidale NSW 2350
Tel: 02 6772 0454

Lismore Office
PO Box 229
Lismore NSW 2480
Tel: 02 6621 6677

www.geolink.net.au Email: info@geolink.net.au

quality solutions sustainable future

Project Title
NPWS Unicorn Falls

Designed		BWH	Drawn		BWH	Checked	
Approved		RE	Date		5/11/2020	MVE	
XREFs							
Scale							
metres 0 1 2 3 4 5							

Drawing Title
Earthworks Cut and Fill Plan

Drawing Number Revision
3706/C012 2