



NSW National Parks and Wildlife Service

Visitor infrastructure

Northern NSW national parks of the Tweed Caldera



View from Pinnacle lookout across the caldera to Wollumbin (Murray Vanderveer/DPE)

National parks of the Tweed Caldera

National parks of New South Wales are the jewel in our State's crown, and the national parks and reserves of the Tweed Caldera region on the North Coast of New South Wales are a particular highlight.

Characterised by lush rainforests, mountain views, countless waterfalls and hidden rockpools, all set within the remnant caldera of an ancient shield volcano, they are home to ancient Gondwana rainforest, an exceptional diversity of plants and animals and Aboriginal sites of deep cultural significance, including the highly significant summit of Wollumbin (Mount Warning).

With 11 national park reserves within or on the outer rim of the Tweed Caldera, National Parks and Wildlife Service (NPWS) is committed to designing and delivering a range of high-quality recreational opportunities that showcase the natural and cultural values of the region in manner that is sustainable, appropriate, benefits regional communities, and enhances Aboriginal co-management opportunities.

Investments in northern NSW

The NSW Government is investing at record levels in national park visitor infrastructure, recognising the importance of national parks, particularly through visitation, in generating \$17.9 billion per annum in economic activity to the NSW economy.

In the Tweed, Byron and Lismore local government areas (LGAs), **national parks generate \$974 million per annum** in economic activity and **support more than 600 jobs**.

Visitation to the north coast national parks grew by 45% between 2008 and 2018, providing a strong indication of increasing demand for nature-based opportunities in the region.

As part of this biggest ever investment in national park visitor infrastructure, NPWS is delivering a suite of new and improved visitor amenities across a range of national parks helping to meet demand and support sustainable community access.

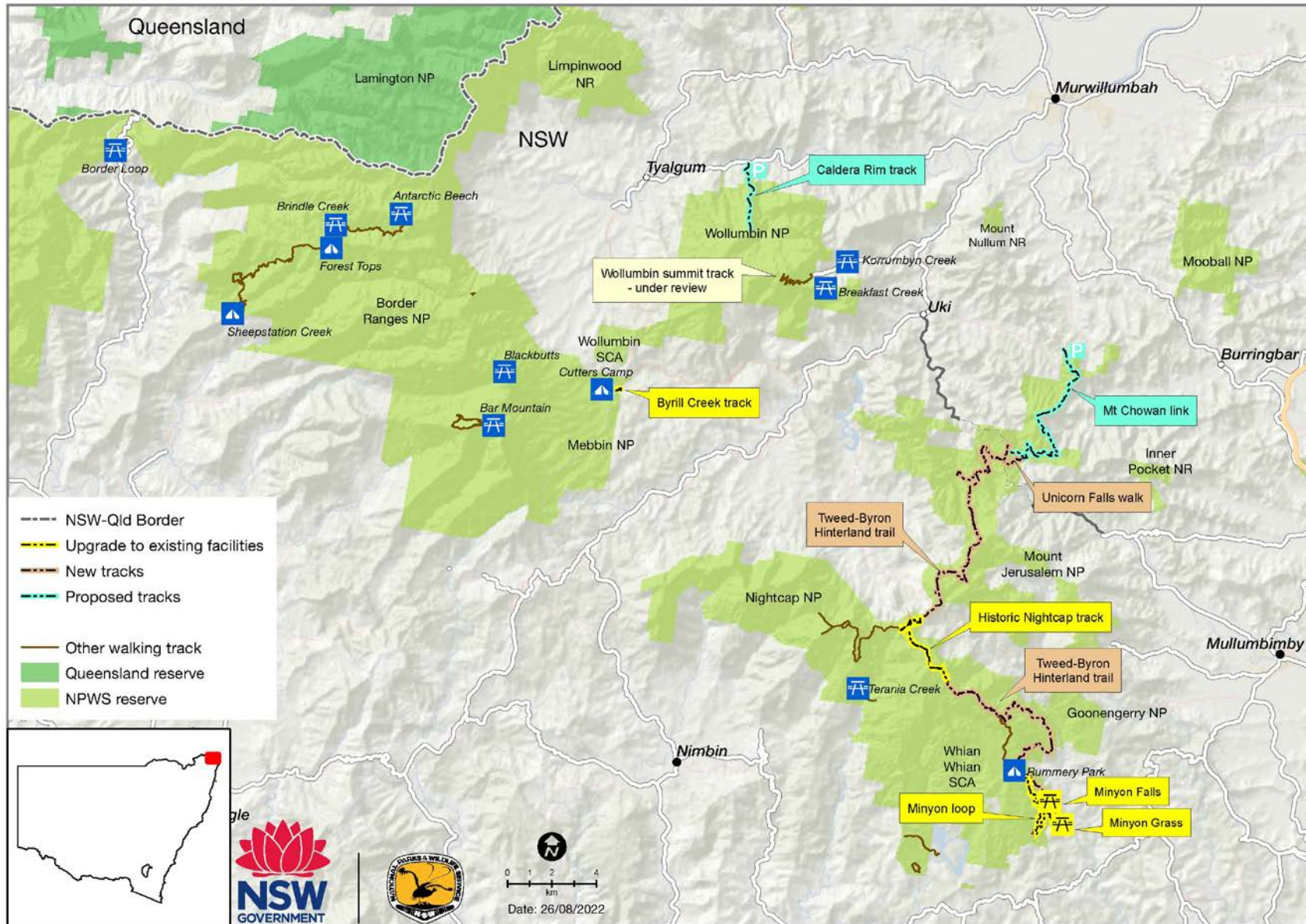
Projects include a new multi-day walk, accessible trails, upgraded campgrounds and picnic areas, and new spectacular lookouts.

This document outlines existing visitor infrastructure projects underway as well as potential new opportunities that NPWS may seek to explore in the future, subject to consultation with national park stakeholders.



Spectacular new Minyon Falls lookout opened December 2021 (Malecki/DPE)

Visitor infrastructure projects northern NSW



Tweed Byron hinterland trail

A new multi-day walk is coming to northern NSW.

The project is delivering a stunning 38-km, 4-day hiking trail spanning Nightcap National Park, Mount Jerusalem National Park and Whian State Conservation Area.

Starting at Manns Road near Uki, take a walk through open forest near World Heritage-listed rainforest, finishing at Minyon Falls where a new cantilevered lookout provides spectacular views of the rainforest and valley below. The walk can be self-guided or taken with a tour guide.

Other upgrades at various precincts along the 38-km track include 3 remote camping sites, amenities blocks, picnic areas, parking spaces, visitor information and seating. These will incorporate universal access principles, enhance safety and provide broader access and enjoyment for visitors. The project is due for completion in 2023.

Unicorn Falls precinct upgrades – Mount Jerusalem National Park

- New walking track linking the Manns Road trail head and Unicorn Falls
- A small carpark, pathways and steps to allow safe access to the pool at the base of Unicorn Falls, visitor information and seating
- Manns Road trail head upgrade including visitor information, toilet facilities, parking spaces and turning bay

Minyon Falls precinct upgrades – Nightcap National Park:

- Spectacular new cantilevered all access lookout over Minyon Falls
- Complete redevelopment of day use area including upgraded pathways, walking tracks, all access bridge, toilet facilities, new picnic tables and shelters, directional signage and educational amphitheatre
- Improved roads and additional parking
- Cultural interpretation in development



Lookout over Minyon Falls, part of the Tweed Byron hinterland trail (J Malecki/DPE)

Nightcap National Park

Protestors Falls precinct upgrades, Terania Creek

- Improve access and safety along walking track and replace 30 m of track with new stone stairs.
- Build an all-access crossing over Bat Cave Creek (in progress).
- Install new interpretation and educational signage.
- Completion expected mid-2023.



Waterfalls Terania Creek (J Turbill/DPE)

Upgrades to Newton Drive to improve access

- Completed patch seal 1.4 km of access road.
- Carry out vegetation works (completion due Sep 2023).

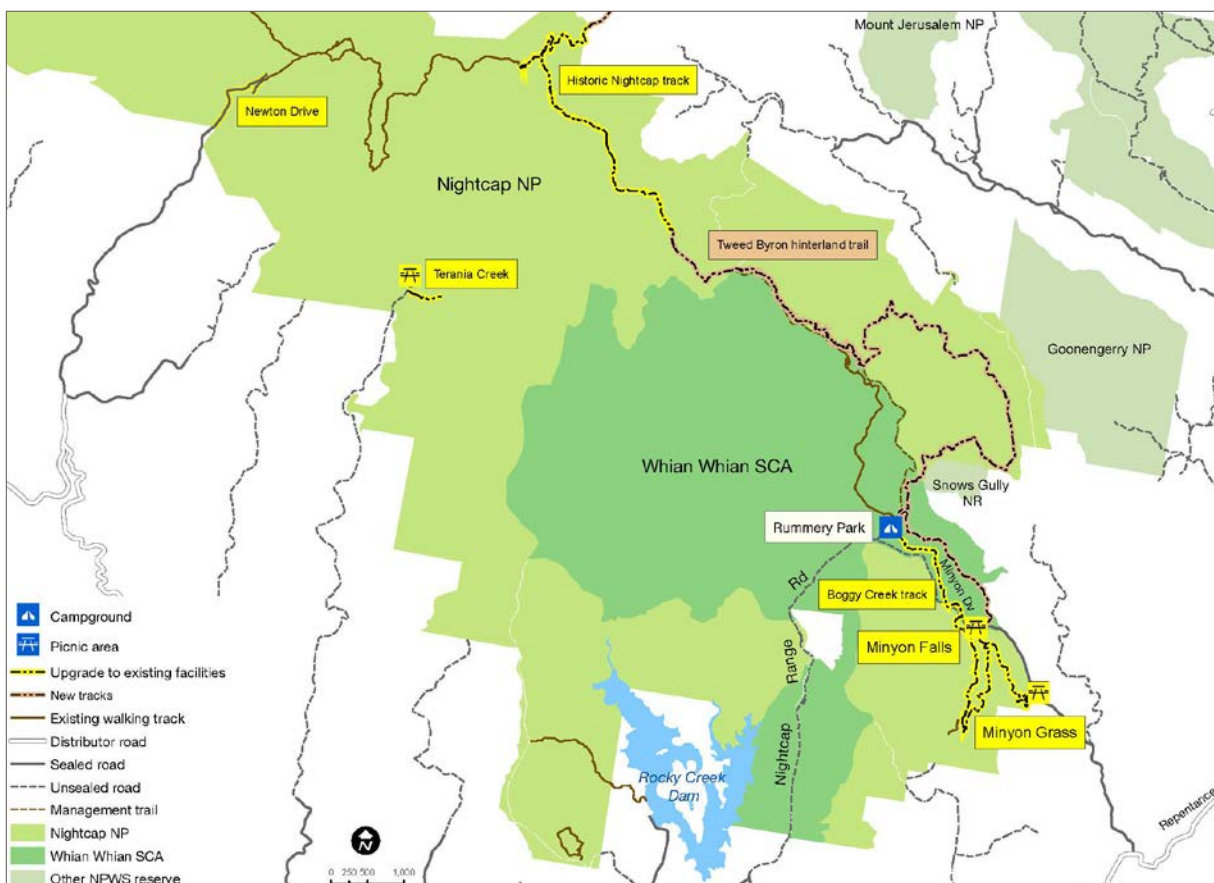
Minyon Grass day use area improvements

- Sand, repair and reseal 25 m long lookout structure, toilets, picnic tables and signs (completion due Sep 2023).

Upgrade Historic Nightcap Track

- Improve 2.6 km of track including 306 new stone steps, drainage and benching (completion due mid-2023).

Map of Nightcap National Park visitor infrastructure projects



Whian Whian State Conservation Area

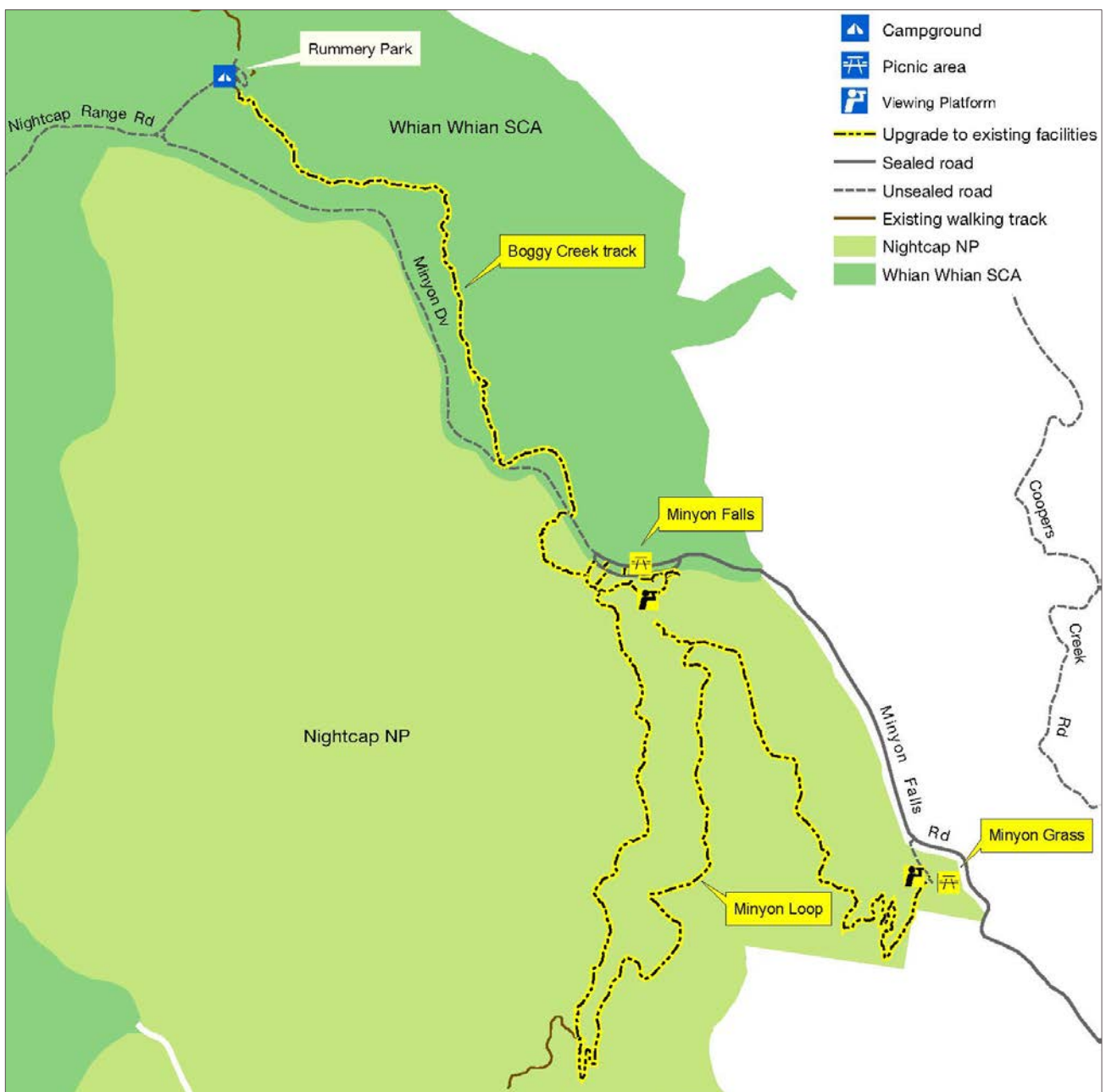
Boggy Creek walking track improvements

- Completed vegetation works and improved drainage.
- Completed upgrade and reconstruction of 500 m of walking track and benching of 1 km of track.



Boggy Creek (J Spencer/DPE)

Map of Whian Whian SCA visitor infrastructure projects



Mebbin National Park

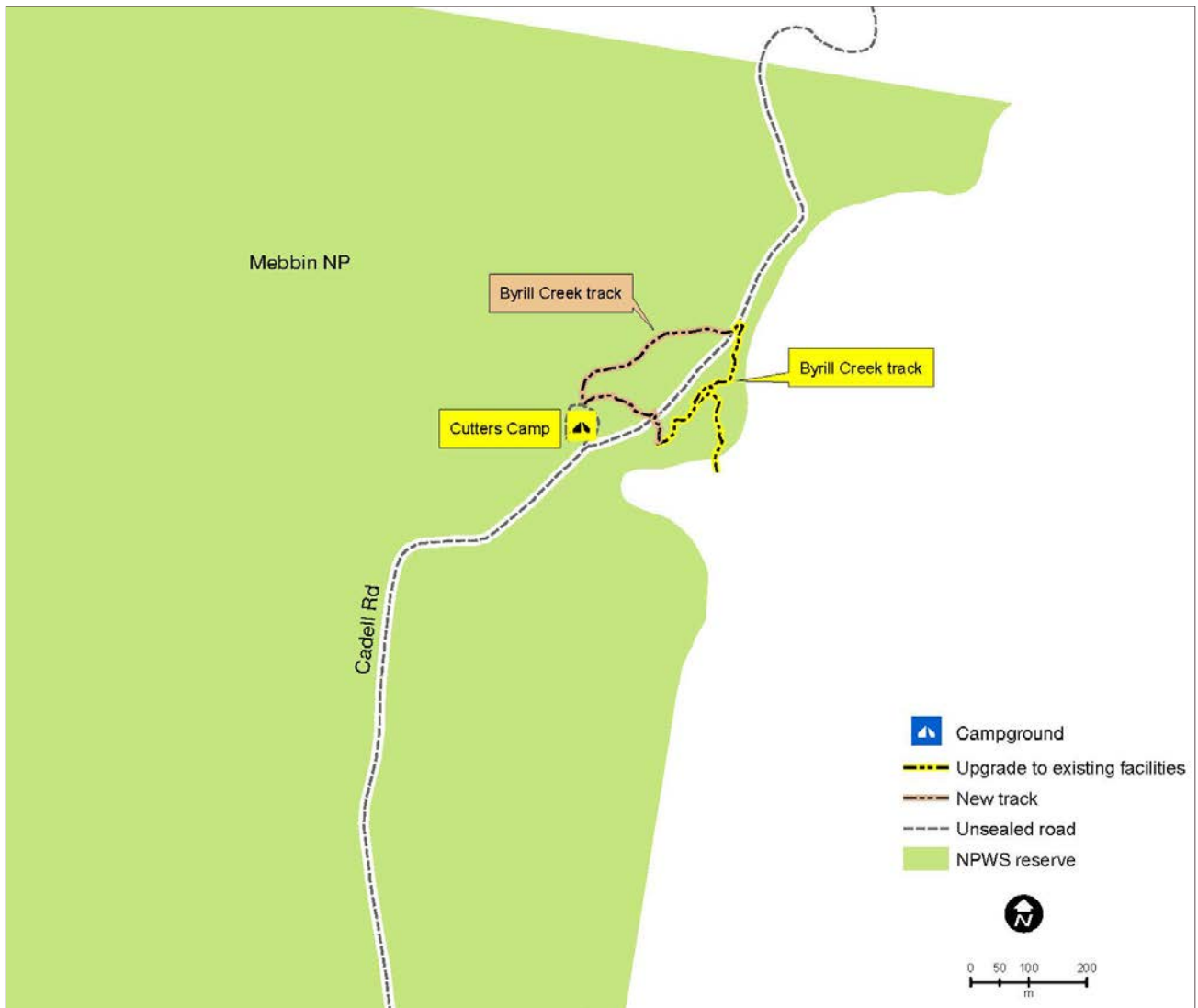
A new Byrriil Creek walking track

- Construct a 1.2 km forest loop walk at Cutters Camp Campground.
- Install interpretation signage and stone seating by the creek.
- Completion expected in 2023.



Byrriil Creek (D Hofmeyer /DPE)

Map of Mebbin National Park visitor infrastructure projects



Wollumbin summit, Wollumbin National Park

Safety issues and closure

The Wollumbin summit track was closed by NPWS in March 2020 following an engineering assessment which highlighted significant visitor safety risks associated with the summit's post and chain system. Any proposed make-safe infrastructure works for the summit track would likely result in material impacts on a declared Aboriginal Place (requiring assessment for an Aboriginal Heritage Impact Permit). The closure has been extended until October 2022 to ensure appropriate consultation can occur about the future of the site.

Aboriginal cultural significance

The upper reach of Wollumbin, including its summit, was declared an Aboriginal Place in 2014 in recognition of its deep cultural significance to Aboriginal people. The declaration affords Wollumbin special legal protections and, in addition to recognising and protecting Aboriginal cultural heritage, is intended to ensure a greater role for Aboriginal custodians to make future decisions about the management of the Aboriginal Place.

Future management

In keeping with the intent of the Aboriginal Place declaration, an Aboriginal Place Management Plan has been prepared by the Wollumbin Consultative Group to articulate the aspirations of Aboriginal communities about the long-term management of the cultural values of the site. Aboriginal communities have long held a view that the summit should be closed.

Alternative infrastructure proposals

Acknowledging the Aboriginal community's view about the closure of the summit, NPWS has developed alternate visitor opportunity proposals within Wollumbin National Park and surrounds for consultation with Aboriginal and tourism stakeholders. They will provide opportunities for high-quality recreational experiences that will maintain and increase benefits to the regional community, in addition to the suite of projects being delivered (and outlined earlier).

Caldera rim walk proposal

Wollumbin National Park

The proposed 7.2 km (return) walking track provides a summit-like hiking experience. It involves climbing more than 500 m in elevation to the top of the inner caldera, where visitors can enjoy views of the Wollumbin summit and surrounding caldera.

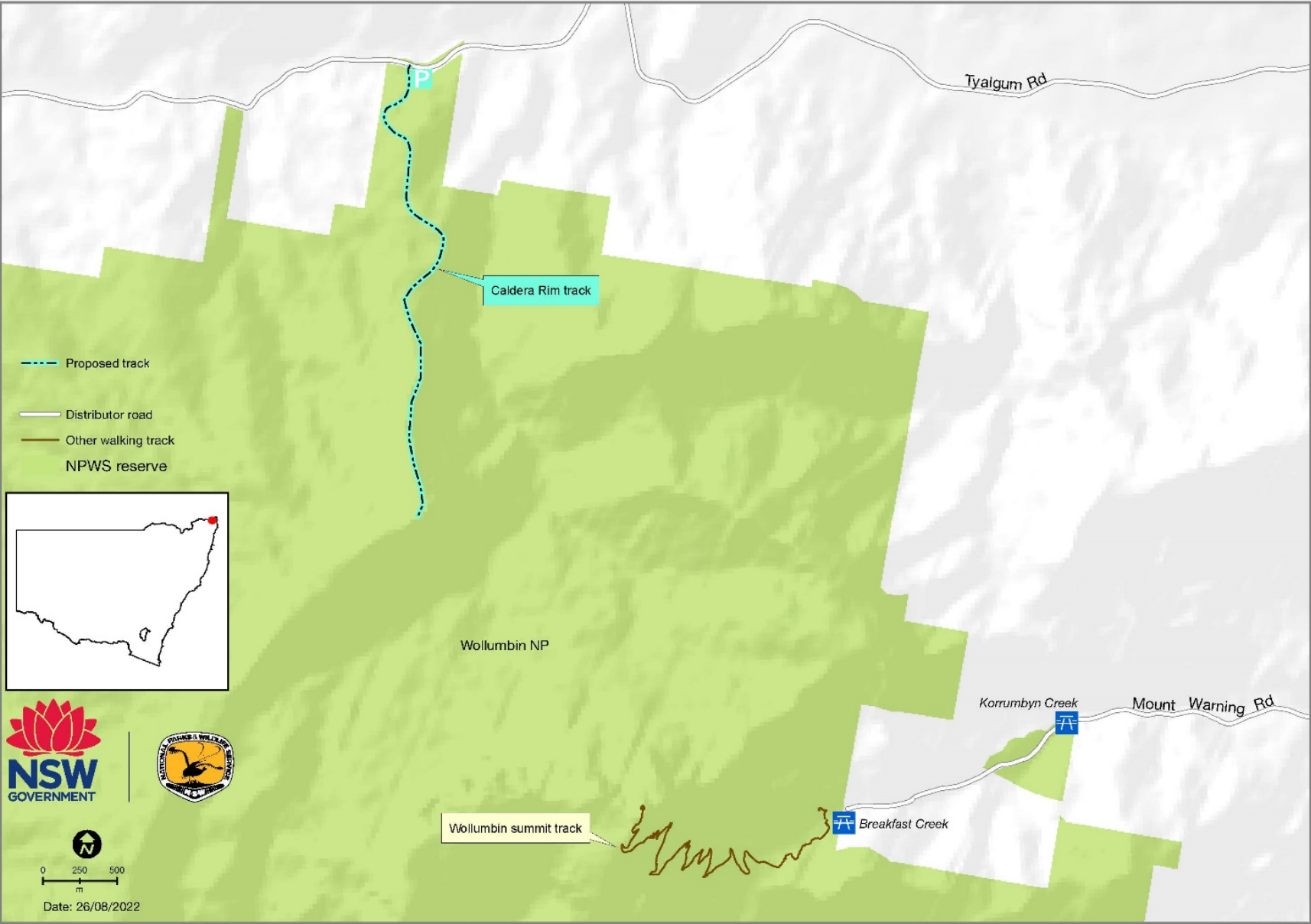
With easy access from Murwillumbah and Tyalgum, the walking experience would also be a feature along the Tweed Hinterland scenic drives.

Further opportunities to extend the track into nearby parks may be investigated which could enable economic opportunities for local Aboriginal businesses and other local businesses.



Caldera rim views (J Atkins/DPE)

Map of Caldera Rim walking track proposal





Doughboy and Wollumbin caldera, taken from Mount Jerusalem National Park (Dean Trezise/DPE)

Mount Chowan link proposal

Mount Jerusalem National Park

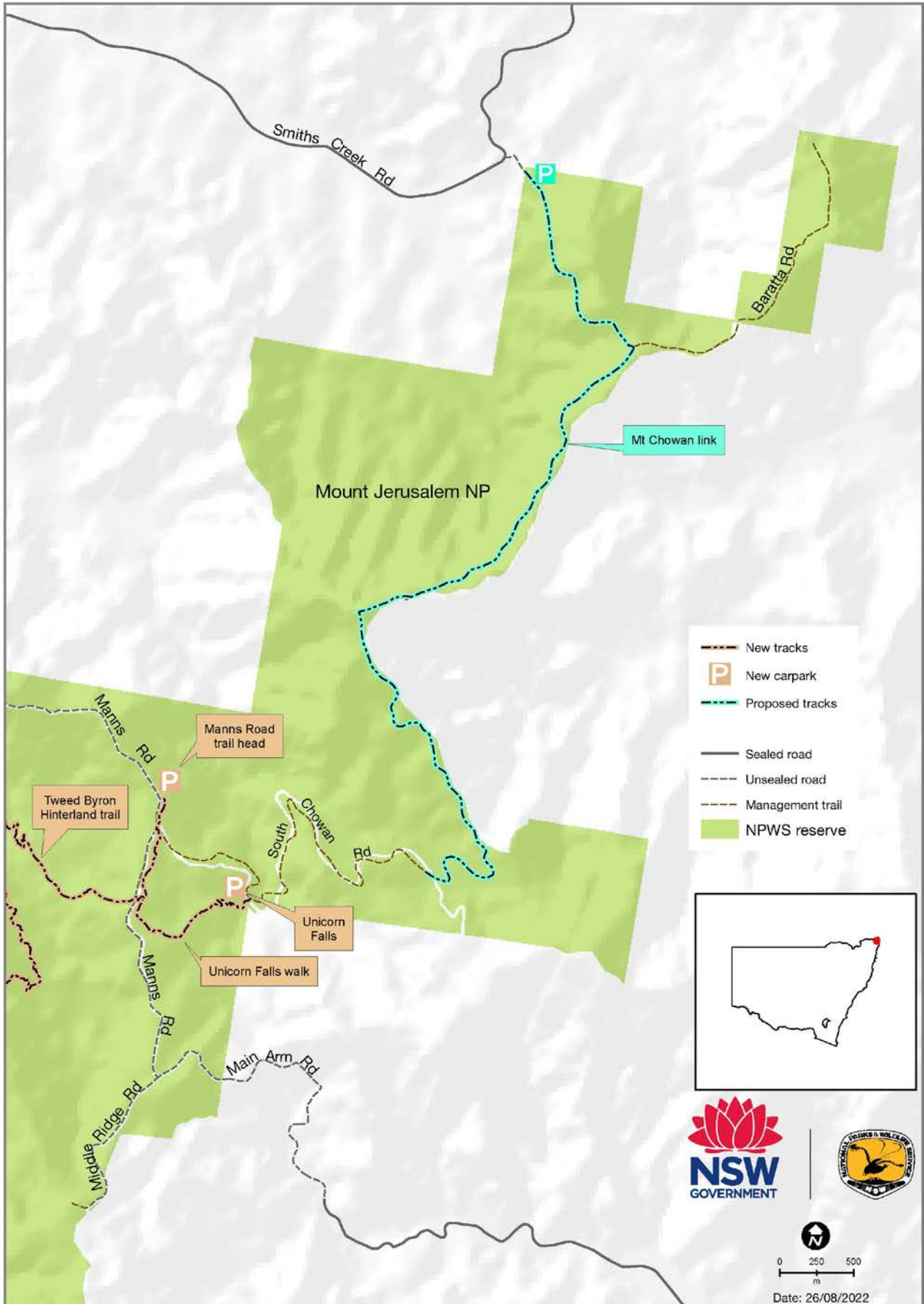
This proposal offers a low-impact 2.5 km (one way) walking track, following almost entirely existing national park management trails. The proposal would give visitors opportunities to walk among stunning dry forest and rainforest communities and experience cascades, waterfalls and creeks.

With several vantage points along the route, visitors would still enjoy views of Wollumbin and the Tweed Caldera.



Mount Chowan link views (J Atkins / DPE)

Map of Mount Chowan link proposal



Environment and Heritage, Department of Planning and Environment, www.environment.nsw.gov.au
 ISBN 978-1-922899-40-8; EES 2022/0444; September 2022