



NSW NATIONAL PARKS & WILDLIFE SERVICE

Tweed Byron Hinterland Trails

**Amendments to plans of management for
parks and reserves of the Tweed Caldera
(incorporating**

**Border Ranges, Goonengerry, Mebbin, Mount Jerusalem, Mount Warning and
Nightcap National Parks and Limpinwood, Numinbah and Snows Gully Nature
Reserves) and Whian Whian State Conservation Area**



© 2019 State of NSW and Department of Planning, Industry and Environment

With the exception of photographs, the State of NSW and Department of Planning, Industry and Environment are pleased to allow this material to be reproduced in whole or in part for educational and non-commercial use, provided the meaning is unchanged and its source, publisher and authorship are acknowledged. Specific permission is required for the reproduction of photographs.

The Department of Planning, Industry and Environment (DPIE) has compiled this report in good faith, exercising all due care and attention. No representation is made about the accuracy, completeness or suitability of the information in this publication for any particular purpose. DPIE shall not be liable for any damage which may occur to any person or organisation taking action or not on the basis of this publication. Readers should seek appropriate advice when applying the information to their specific needs.

All content in this publication is owned by DPIE and is protected by Crown Copyright, unless credited otherwise. It is licensed under the [Creative Commons Attribution 4.0 International \(CC BY 4.0\)](#), subject to the exemptions contained in the licence. The legal code for the licence is available at [Creative Commons](#).

DPIE asserts the right to be attributed as author of the original material in the following manner: © State of New South Wales and Department of Planning, Industry and Environment 2019.

Cover photo: Nightcap National Park. Photo credit: NewScape Design

This amendment was adopted by the Minister for the Environment on the 4 October 2019.

Published by:

Environment, Energy and Science
Department of Planning, Industry and Environment
4 Parramatta Square, 12 Darcy Street, Parramatta NSW 2150
PO Box A290, Sydney South NSW 1232
Phone: +61 2 9995 5000 (switchboard)
Phone: 1300 361 967 (Environment, Energy and Science enquiries)
TTY users: phone 133 677, then ask for 1300 361 967
Speak and listen users: phone 1300 555 727, then ask for 1300 361 967
Email: info@environment.nsw.gov.au
Website: www.environment.nsw.gov.au

Report pollution and environmental incidents
Environment Line: 131 555 (NSW only) or info@environment.nsw.gov.au
See also www.environment.nsw.gov.au

ISBN 978-1-922317-91-9
EES 2019/0696
December 2019

Find out more about your environment at:

www.environment.nsw.gov.au

Contents

Why amend the plans?	4
How to read the amendment	5
Amendments	6
A Parks and Reserves of the Tweed Caldera - Mount Warning, Border Ranges, Mebbin, Nightcap, Mount Jerusalem and Goonengerry National Parks and Limpinwood, Numinbah and Snows Gully Nature Reserves	6
B Whian Whian State Conservation Area	15

List of figures

Figure 1 Map 3 - Nightcap, Mount Jerusalem & Goonengerry NPs and Snows Gully NR	14
Figure 2 Map 1 - Whian Whian State Conservation Area	17

Why amend the plans?

Southern Cross University completed a commissioned report into alternative recreational opportunities to summiting Wollumbin (Mount Warning) in the Tweed Caldera in 2014. Current and potential visitors identified provision of more diverse walks as a key desire.

The creation of new recreational opportunities has the potential to reduce visitor pressure and tourism dependence on Wollumbin National Park and to increase visitor nights within the region while catering for a larger variety of visitor experiences. NPWS is working closely with stakeholder groups to identify and improve the recreational opportunities within the Tweed and Byron local government areas. The close connection the proposed walking track has with regional towns caters for both adventurous independent travellers as well as supporting local communities with short day walks. The proposed amendments are stakeholder-driven.

A major focus of the amendments is development of a multi-day walking track route linking Tweed Shire, via Mount Jerusalem National Park, to the visitor area at Minyon Falls in Nightcap National Park. New walking tracks and track linkages are proposed, building on the existing network of walking tracks, management trails and roads to create a multi-day walking track route that will also expand day walk opportunities. The majority of the multi-day walking track network will meet Class 4 standard (Australian Walking Track Grading System). Class 4 tracks are hiking tracks suited to self-reliant bushwalkers with only basic directional signage provided. Track surfaces are largely natural except where prevailing environmental conditions necessitate improvements.

Visitor facilities at existing visitor areas will be improved. New bush camps are proposed in Mount Jerusalem and Nightcap National Parks. A new camping area to cater for walkers on longer routes and a new day use area are planned in Mount Jerusalem National Park.

The amendments propose to acknowledge the declaration of the Wollumbin Aboriginal Place in August 2014. Wollumbin was declared an Aboriginal Place to recognise its special Aboriginal cultural heritage significance.

Creating alternative, expanded bushwalking options permits reconsideration of visitor facilities and walking tracks in Wollumbin National Park in acknowledgement of Wollumbin's special significance to Aboriginal people.

Mount Warning National Park was incorporated in Wollumbin National Park in 2006. Mount Warning National Park is no longer a reserve under the *National Parks and Wildlife Act 1974*. The amendments propose changing the name of the park in the plan to reflect this change.

Separate master plans are being developed that will provide detailed information on the multi-day walking track route, Minyon Falls day use area, Unicorn Falls day use area and camping area, and visitor facilities in Wollumbin National Park. All master plans will be publicly exhibited and once finalised will guide preparation of necessary environmental impact, cultural heritage, safety, social, financial and engineering assessments. Environmental assessments will be conducted to examine the significance of likely environmental impacts of the proposal and measures required to mitigate any potential impacts. This highlights the need to ensure public visitation and enjoyment is compatible with the protection of conservation values. The proposed project will undergo further detailed design and assessment to ensure compliance with the park's plan of management and determine the finer details for proposed developments and upgrades to existing infrastructure.

How to read the amendment

The amendments propose changing sections of text, tables and a map in the two plans of management. The Amendment should be read in conjunction with the adopted plans, as well as the 2010 amendments to the Parks and Reserves of the Tweed Caldera plan.

Plans of management are available on the Department of Planning, Industry and Environment website at: [Plans of management](#). This page provides links to plans of management for [Tweed Caldera Parks and Reserves Plan of Management](#) and for the [plan amendment in 2010](#). There are also links to the [Whian Whian State Conservation Area Plan of Management](#), adopted in 2010.

References in this document to numbering relate to the numbering used in the online versions of the adopted plans and/or the amendments.

Amendments

The following amendments propose a multi-day walking track network linking Tweed Shire via Mount Jerusalem National Park to the visitor area at Minyon Falls in Nightcap National Park. Improvements to visitor facilities and new visitor facilities are also proposed. Minor amendments are also required to the Whian Whian State Conservation Area Plan of Management to incorporate some elements of a visitor facility upgrade at Minyon Falls located on the border of Nightcap National Park and Whian Whian State Conservation Area.

The amendments also acknowledge declaration of an Aboriginal Place in Wollumbin National Park in 2014 and the incorporation of Mount Warning National Park in Wollumbin National Park in 2006.

Below are the amendments to the plans:

A Parks and Reserves of the Tweed Caldera – Mount Warning, Border Ranges, Mebbin, Nightcap, Mount Jerusalem and Goonengerry National Parks and Limpinwood, Numinbah and Snows Gully Nature Reserves

1. Administrative Changes Substituting Mount Warning National Park with Wollumbin National Park

Substitute all references to Mount Warning National Park, including Mount Warning National Park, Mt Warning National Park, Mt Warning NP and Mount Warning NP, with Wollumbin National Park, in the text of the plan and also on the maps.

2. Acknowledging Declaration of an Aboriginal Place in Wollumbin National Park

Under 1.5 SUMMARY OF KEY VALUES

Insert the following after the first paragraph 1 (p.11):

An Aboriginal Place was declared over part of Wollumbin National Park on 8 August 2014 to recognise its cultural significance to Aboriginal people. The Aboriginal Place extends from the summit of Wollumbin down to an elevation of 600 metres. The declaration recognises the mountain's significance and cultural heritage values, which relate to traditions, observances, customs, beliefs or history of Aboriginal people.

Under 3.1.3 Aboriginal Heritage

Insert the following after the last paragraph (p.27), before 'Desired Outcomes':

Wollumbin's cultural significance to Aboriginal people was recognised through the declaration of an Aboriginal Place on 8 August 2014. The Aboriginal Place extends from the summit of Wollumbin down to an elevation of 600 metres. The declaration provides recognition of the mountain's significance and cultural heritage values, which relate to traditions, observances, customs, beliefs or history of Aboriginal people.

3. Amendments Related to the Proposed Multi-Day Walking Track Network and Walking Tracks and Visitor Facilities at Wollumbin National Park

Under 3.2 VISITOR USE

Delete the following sentence on the bottom of page 48:

Given these visitor destinations are well located, the emphasis of this plan is improving the management of existing visitor areas rather than the development of any new ones.

And replace with:

While these visitor destinations are spread across the region, the low scale of visitor infrastructure and recreational opportunities is insufficient to meet current and future needs of high level visitation to the region.

Insert the following after the last paragraph (p.49):

This plan supports developing a multi-day walking track network linking Mount Jerusalem NP with Whian Whian State Conservation Area and the Minyon Falls visitor area in Nightcap NP (see Section 3.2.4 Bushwalking). To create the network, new walking tracks and new track linkages will be investigated that build on the existing system of walking tracks, management trails and roads. The new walking track network would also incorporate new day walks. The concept includes improving visitor facilities, signage, interpretation and information; developing a new camping area and day use area at Unicorn Falls in Mount Jerusalem Park; and developing remote camping areas in Mount Jerusalem and Nightcap National Parks (see Sections 3.2.2 Day Use Areas, 3.2.3 Camping, 3.2.4 Bushwalking and 3.2.10 Information, Interpretation & Education).

Development of a multi-day walking track network would reduce visitor pressure on Wollumbin National Park, while catering for a wider variety of visitor experiences and supporting local communities.

Separate master plans are being developed that will provide detailed information on the multi-day walking track route, Minyon Falls day use area, Unicorn Falls day use area and camping area, and visitor facilities in Wollumbin NP. All master plans will be publicly exhibited and, once finalised, will guide preparation of all environmental impact, cultural heritage, safety, social, financial and engineering assessments required by law and policy. Following public exhibition, the master plans may be adjusted to meet environmental assessment outcomes, consultation and local design issues but must still meet the requirements of this plan of management.

The majority of the multi-day walking track network will be constructed and maintained to Class 4 standard (Australian Walking Track Grading System). Class 4 tracks are hiking tracks suited to self-reliant bushwalkers with only basic directional signage provided. Track surfaces are largely natural except where prevailing environmental conditions necessitate improvements. The track network will include higher grade walking tracks where required due to higher levels of visitor use, such as the Boggy Creek Walk adjacent to the Minyon Falls day use area.

Under 3.2.1 Public Vehicle Access

Delete sentences 1 and 2 from paragraph 5 (p. 50):

The Breakfast Creek car park at Mt Warning NP is considered to be at its maximum capacity based on environmental and infrastructure constraints. This area is principally a track head for the popular Summit Walk and ancillary short walk to the Lyrebird Lookout and is the most popular visitor destination in the planning area.

and replace with:

The car park at the Breakfast Creek day use area in Wollumbin NP is considered to be at its maximum capacity based on environmental and infrastructure constraints. The day use area includes track heads for the popular Summit Walk and the ancillary short walk to the Lyrebird Lookout and is the most popular visitor destination in the planning area.

Desired Outcomes

Delete dot point 2 (p.52):

- Car parking at designated day use areas have improved traffic flow and parking patterns whilst protecting adjoining vegetation and maintaining existing car parking capabilities.

and replace with:

- Car parks at designated day use areas have improved traffic flow and parking patterns while protecting adjoining vegetation.

Insert the following after dot point 2 (p.52):

- Provide adequate car parking facilities at Minyon Falls day use area in Nightcap NP as part of a visitor facilities upgrade, subject to compliance with any applicable native title or ILUA procedures (see also Whian Whian State Conservation Area Plan of Management (NPWS 2010)).

Under 3.2.2 Day Use Areas

Insert the following after paragraph 1 (p.54):

Table 3 has been amended to incorporate changes to day use areas associated with the multi-day walking track network concept.

Delete paragraph 7 (p.54)

NPWS will discourage unacceptable use of the Chowan Creek area by removing the barbecue and picnic table and will prevent vehicle access to the stream due to the erosion vehicles and trail bikes are causing to the creek bank.

and replace with:

As part of the multi-day walking track network concept, this plan enables development of a day use area at Unicorn Falls on Chowan Creek, South Chowan Road, in Mount Jerusalem NP (refer Map 3). The facility will incorporate car parking, a toilet, picnic tables, BBQs, visitor information and formalised access to the waterfall. Final design will include measures to prevent unauthorised vehicle access to the creek bank and revegetation.

Guidelines and Actions

Day Use Areas

Delete dot point 3 (p.55):

- Remove the barbecue and picnic table and close the trail leading to these facilities at the car park on South Chowan Road. Install a locked gate and sign accordingly.

and replace with:

- Develop a day use area at Unicorn Falls on Chowan Creek, South Chowan Road, in Mount Jerusalem NP (refer Map 3).

Table 3 – Day Use Area Classification

Update Table 3 (p.57) to reflect the preceding changes to Sections 3.2.1 and 3.2.2.

Replace row 13 with the following row, and add the footnote below the table:

Facilities	Primary Function	Picnic Facilities	Lookout Platform	Toilets	Shelter Structure	Car Park Max. Limit
Visitor Area						
Minyon Falls, Nightcap NP	Picnic Area	Yes	Yes	Yes	Yes	120 ¹

Note:

¹ Car parks at the Minyon Falls day use area are partly located in Nightcap NP and partly located in Whian Whian SCA. The maximum car park limit above is a combined limit for car parks in both parks (see also Whian Whian State Conservation Area Plan of Management [NPWS 2010]) Upgrading is subject to approval of the master plan, compliance with any applicable native title or ILUA procedures, community consultation and environmental assessment.

Under 3.2.3 Camping

Insert the following after paragraph 5 (p.58):

As part of the multi-day walking track network, this plan enables development of a camping area adjacent to Manns Road, near Unicorn Falls, in Mount Jerusalem NP (refer Map 3). The facility will incorporate car parking, campsites, toilets, picnic tables, BBQs, an information shelter and a walking track to the waterfall. The final design will include measures to prevent unauthorised vehicle access to the creek bank and revegetation. New walking tracks will link the camping area to Unicorn Falls (approximately 1km away) and to the Whiskey Creek Trail (approximately 200m away), providing connections to the multi-day walking track network.

Insert the following after paragraph 1 (p.59):

As part of the multi-day walking track network, this plan enables development of new bush camps in strategic, remote locations along the walking track network in both Mount Jerusalem and Nightcap National Parks, subject to compliance with any applicable native title or ILUA procedures and subject to detailed environmental, cultural heritage, safety, social, financial and engineering assessments. Camp numbers, facilities and locations will be finalised following stakeholder engagement for the master plan process.

Desired Outcomes

Insert the following after dot point 2 (p.60):

Independent bushwalkers utilising the multi-day walking track network are adequately serviced with remote bush camping facilities in strategic locations along the route.

Guidelines and Actions

Camping Areas

Delete dot point 1 (p. 60):

- Provide for camping at the existing camping areas identified in Figure 1 in accordance with the level of facilities and site capacity defined in Table 4.

and replace with:

- Provide for camping at camping areas identified in Maps 1-3 in accordance with the level of facilities and site capacity defined in Table 4.

Insert the following after dot point 1 (p.60):

- Develop a camping area adjacent to Manns Road, near Unicorn Falls, in Mount Jerusalem NP.

Table 4 – Camping Areas

Update Table 4 (p.60) to reflect the changes made to Section 3.2.3.

Insert the following after row 3:

Facilities	Primary Function	Picnic Facilities	Lookout Platform	Toilets	Shelter Structure	Camp Site Max. Limit
Visitor Area						
Unicorn Falls, Mount Jerusalem NP	Camping	Yes	No	Yes	No	Up to 10

Remote Camping

Insert the following after dot point 1 (p.60):

- Develop remote bush camps in strategic locations on the multi-day walking track network in both Mount Jerusalem and Nightcap National Parks, subject to compliance with any applicable native title or ILUA procedures and detailed environmental, cultural heritage, safety, social, financial and engineering assessments. Camp numbers, facilities and locations will be finalised following stakeholder engagement for the master plan process.

Under 3.2.4 Bushwalking

Delete sentence 6 from paragraph 1 (p. 62):

Any new track or closure of the track will be subject to an amendment to this plan.

and replace with:

Any new track or closure of the track will be subject to the master plan.

Insert the following after paragraph 5 (p.62):

NPWS is working closely with stakeholder groups to identify and improve recreational opportunities within the Tweed, Byron and Lismore local government areas. A major focus of this collaboration is the development of separate master plans that will provide detailed information on the multi-day walking track route, Minyon Falls day use area, Unicorn Falls day use area and camping area, and visitor facilities in Wollumbin NP. The network builds on the existing system of walking tracks, management trails and roads.

The master plans will be publicly exhibited and, once finalised, will guide preparation of necessary environmental impact, cultural heritage, safety, social, financial and engineering assessments.

The majority of the multi-day walking track network will be constructed and maintained to Class 4 standard (Australian Walking Track Grading System). Class 4 tracks are hiking tracks suited to self-reliant bushwalkers with only basic directional signage provided. Track surfaces are largely natural except where prevailing environmental conditions necessitate improvements.

Guidelines and Actions

Walking Track Network

Insert the following before dot point 1 (p.63):

- Develop master plans for a multi-day walking track network and associated visitor facility improvements linking Mount Jerusalem NP with Minyon Falls in Nightcap NP, Minyon Falls day use area, Unicorn Falls day use area and camping area, and visitor facilities in Wollumbin NP. Undertake community consultation, comply with any applicable native title or ILUA procedures and prepare environmental impact, safety, social, financial and engineering assessments as required.

Delete dot point 1 (p.63):

- Manage the walking track network identified in Figure 1 in accordance with the designated standard of track (see the maps and refer to *Standards Australia, 2001* for walking track standards).

and replace with:

- Manage the walking track network identified in Figure 1, subject to the outcomes of the master plans, in accordance with the designated standard of track (see the maps and refer to Australian Standards for walking tracks).

Delete dot point 4 (p.63):

- With the exception of the Byrrell Creek extension mentioned above, no new walking tracks will be constructed in the planning area.

Under 3.2.10 Information, Interpretation & Education

Desired Outcomes

Delete dot point 2 (p.76):

- Visitors are well informed of recreation opportunities and facilities available across the region and enjoy safe and sustainable use.

and replace with:

- Visitors are well informed of recreation opportunities and facilities available across the region, including those associated with the multi-day walking track network linking Mount Jerusalem NP and Nightcap NP, and enjoy safe and sustainable use.

Guidelines and Actions

Park signage

Insert the following after dot point 2 (p. 77):

- Provide directional, interpretive and information signs on the multi-day walking track network and at associated visitor areas and access points.

Under 4.1 PLAN IMPLEMENTATION

Table 5 - Implementation Table

Update Table 5 (p. 89) to reflect the preceding changes to Sections 3.2.1 Public Vehicle Access, 3.2.2 Day Use Areas, 3.2.3 Camping, 3.3.4 Bushwalking and 3.2.10 Information, Interpretation & Education.

Section	Key Activities	Priority
3.2.1 Public Vehicle Access		
Insert after key activity 1:	Provide adequate car parking facilities at Minyon Falls day use area in Nightcap NP as part of a visitor facilities upgrade, subject to compliance with any applicable native title or ILUA procedures. [See also Whian Whian State Conservation Area Plan of Management (NPWS 2010)].	High
3.2.2 Day Use Areas		
Delete key activity 3:	Remove the barbecue and picnic table and close the trail leading to these facilities at the car park on South Chowan Road. Install a locked gate and sign accordingly.	Medium
Replace with:	Develop a day use area at Unicorn Falls on Chowan Creek, South Chowan Road, Mount Jerusalem NP.	High
3.2.3 Camping		
Insert after key activity 1:	Develop a camping area adjacent to Manns Road, near Unicorn Falls, Mount Jerusalem NP.	High
Insert after key activity 2:	Develop remote bush camps in strategic locations on the multi-day walking track network in both Mount Jerusalem and Nightcap National Parks, subject to compliance with any applicable native title or ILUA procedures and detailed environmental, cultural heritage, safety, social, financial and engineering assessments. Camp numbers, facilities and locations will be finalised following stakeholder engagement for the master plan process.	High
3.3.4 Bushwalking		
Insert after key activity 1:	Develop master plans for a multi-day walking track network and associated visitor facility improvements linking Mount Jerusalem NP with Minyon Falls in Nightcap NP, Minyon Falls day use area, Unicorn Falls day use area and camping area, and visitor facilities in Wollumbin NP. Undertake community consultation, comply with any applicable native title or ILUA procedures and prepare required environmental impact, cultural heritage, safety, social, financial and engineering assessments.	High
3.2.10 Information, Interpretation & Education		

Insert after key activity 5:

Provide directional, interpretive and information signs on the multi-day walking track network and at associated visitor areas and access points.

High

Under SELECTED REFERENCES

Insert the following after the NPWS (2004) reference (p. 97):

NPWS (2010) Whian Whian State Conservation Area Plan of Management, Department of Environment, Climate Change and Water.

MAP 3 NIGHTCAP, MOUNT JERUSALEM & GOONENGERRY NPS AND SNOWS GULLY NR

Add the location of the camping area and day use area at Unicorn Falls in Mount Jerusalem NP to 'Map 3. Nightcap, Mount Jerusalem & Goonengerry NPs and Snows Gully NR'. Show indicative route of the multi-day walking track on the map.

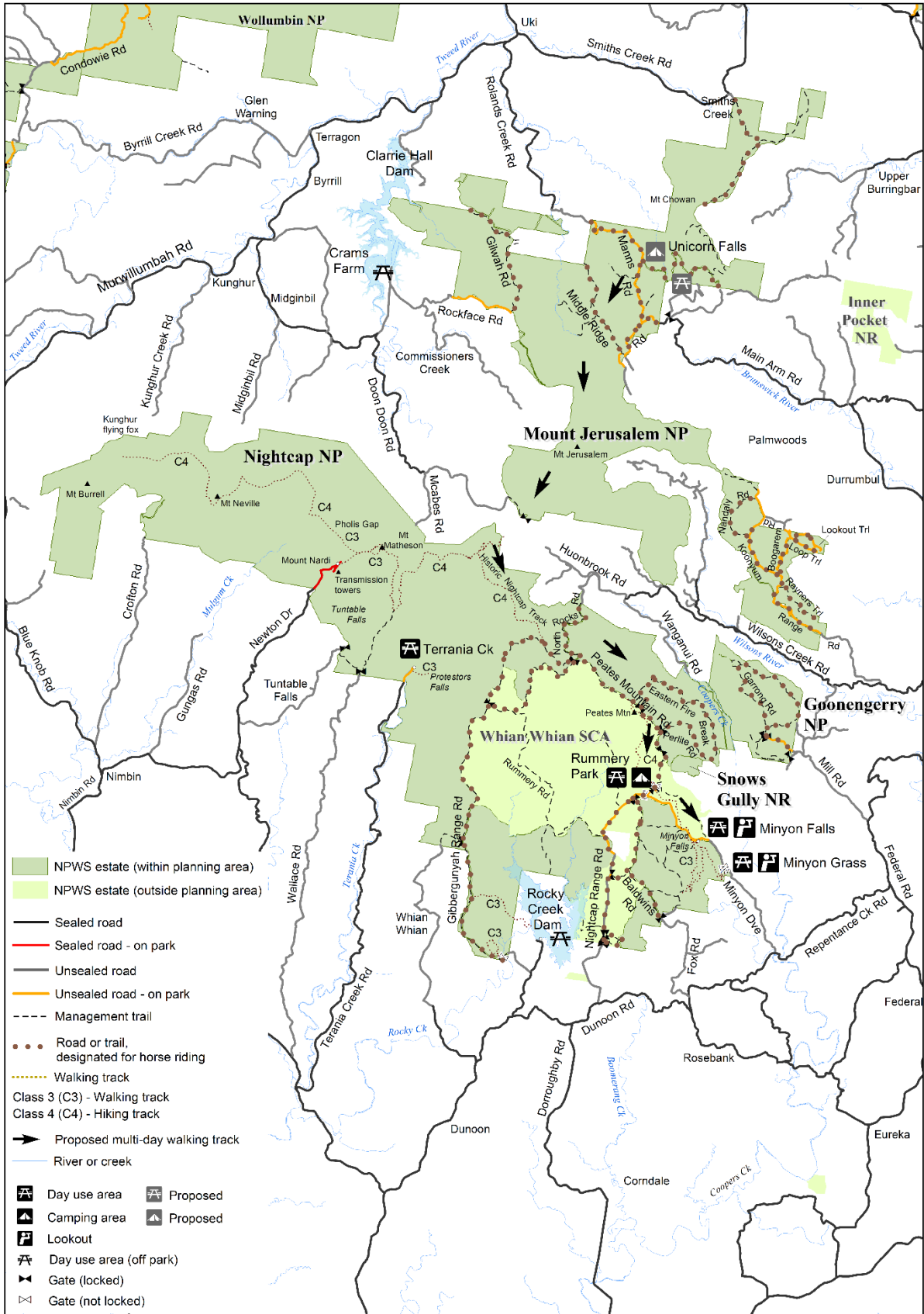


Figure 1 Map 3 - Nightcap, Mount Jerusalem & Goonengerry NPs and Snows Gully NR

B Whian Whian State Conservation Area

1. Amendments Related to the Proposed Multi-Day Walking Track Network

Under 3.7 RECREATION

Remove paragraph 7 (p.10)

Opportunities for walking are currently available along the Boggy Creek Walk and on management trails in the SCA (see Map 1). The Boggy Creek Walk is 2km (one way) starting at Rummery Park and leads to Minyon Falls. The track starts in blackbutt forest and includes a series of small waterfalls and pools along the creek. The Boggy Creek Walk also links up to the Minyon Loop walking track in Nightcap NP. The only other walking track in the SCA is the Peates Mountain Trail which has been temporarily closed to walkers since 2003 due to safety concerns. The feasibility of re-opening the Peates Mountain Trail will be investigated as part of general walking track assessments and subject to resource allocation. If the safety and related resourcing issues can be resolved, the Peates Mountain Walking Trail may be reopened. There is also an opportunity to redevelop the former Peates Mountain Lookout and cater for walking access to the lookout structure. Bushwalkers wishing to link up with the historic Nightcap Track in Nightcap National Park from the Rummery Park Camping Area will also be able to use the Peates Mountain Road as an option in addition to the walking trail if reopened.

and replace with:

Walking opportunities are currently available on the Boggy Creek Walk, Peates Mountain Track and on management trails in the SCA (see Map 1). The Boggy Creek Walk, which is 2 km one-way, links Rummery Park to the Minyon Falls day use area and the Minyon Falls Loop Track in the adjoining Nightcap NP. The Peates Mountain Track was upgraded and re-opened in 2015 after its closure due to safety concerns in 2003. It links Rummery Park, via Peates Mountain and management trails, to the Historic Nightcap Track in the adjoining Nightcap NP. This plan of management enables the redevelopment of the former Peates Mountain Lookout and caters for walking access to the lookout structure, subject to further investigation, design and environmental and cultural heritage impact assessment and compliance with any applicable native title or ILUA procedures.

NPWS is developing master plans for a multi-day walking track network linking Mount Jerusalem NP with Nightcap NP and Whian Whian SCA and Minyon Falls day use area. The master plans will be publicly exhibited, amended and implemented subject to further investigation, design and environmental impact and cultural heritage assessment and compliance with any applicable native title or ILUA procedures. The Boggy Creek Walk and Peates Mountain Track form part of the multi-day walking track network and along with the majority of the network will be maintained to Class 4 walking track standard (Australian Walking Track Grading System). Class 4 tracks are hiking tracks suited to self-reliant bushwalkers with only basic directional signage provided. Track surfaces are largely natural except where prevailing environmental conditions necessitate improvements.

The master plans incorporate upgrading visitor facilities at Minyon Falls day use area, including car parks. Most car parking at the Minyon Falls day use area is in the adjacent Nightcap NP, however some occurs within Whian Whian SCA and will be upgraded in line with the master plan, once finalised. The master plan incorporates a combined

maximum limit of 120 car parking spaces for both parks to adequately cater for visitation at this popular visitor area.

Planning area map

Update the Map (centre page) to incorporate changes to track classification, the re-opening of the Peates Mountain Track, the Peates Mountain Lookout and the indicative route of the multi-day walking track.

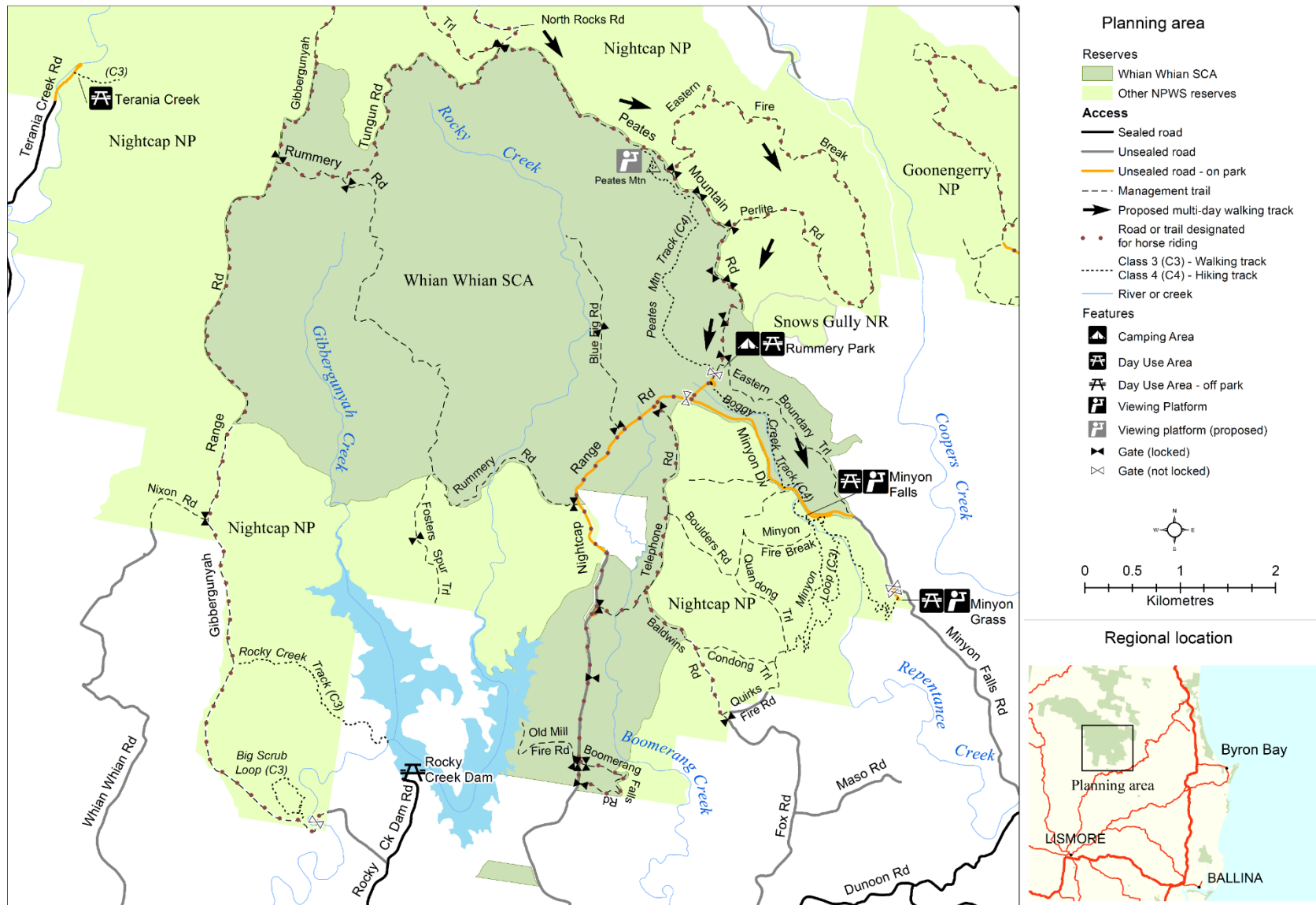


Figure 2 Map 1 - Whian Whian State Conservation Area

6. Management Strategies and Actions Table

Remove paragraph 6 in Column 1 (p.23)

Current Situation

6.6 Recreation

The Peates Mountain walking trail has been closed since 2003 due to safety concerns. However, it may be feasible to re-open the trail subject to an assessment of safety and resource requirements. There is also an opportunity to redevelop a lookout at the former Peates Mountain Lookout using a small section of the walking trail.

and replace with:

Current Situation

6.6 Recreation

The Peates Mountain walking track was closed in 2003 due to safety concerns and was repaired and reopened in 2015. There is an opportunity to redevelop a lookout at the former Peates Mountain Lookout using a small section of the walking trail, subject to compliance with any applicable native title or ILUA procedures.

Insert the following after paragraph 2 in Column 1 (p.24)

Current Situation

6.6 Recreation

Provide adequate car parking at Minyon Falls day use area as part of the visitor facilities upgrade associated with the multi-day walking track network.

Remove Action 6.6.6 in Column 3 (p.23)

Management Strategies/Actions

6.6.6 Maintain the Boggy Creek Walk to Class 3 Australian Standard. Investigate the feasibility of reopening the Peates Mountain Walking Trail. Allow bushwalking along management trails.

and replace with:

Management Strategies/Actions

6.6.6 Maintain the Boggy Creek Walk and Peates Mountain Walk to Class 4 Australian Standard. Allow bushwalking along management trails.

Insert the following after Action 6.6.12 (p.24):

Management Strategies/Actions

Priority

6.6.13 Increase car parking capacity at Minyon Falls day use area to complement car park upgrades in the adjacent Nightcap NP, providing a combined maximum for both parks of 120 car parking spaces. Implement as part of the master plan subject to further investigation, design, environmental and cultural heritage impact assessment, compliance with any applicable native title or ILUA procedures and public consultation.

High